

Bike Ped Masterplan Crowdsourcing Tutorial

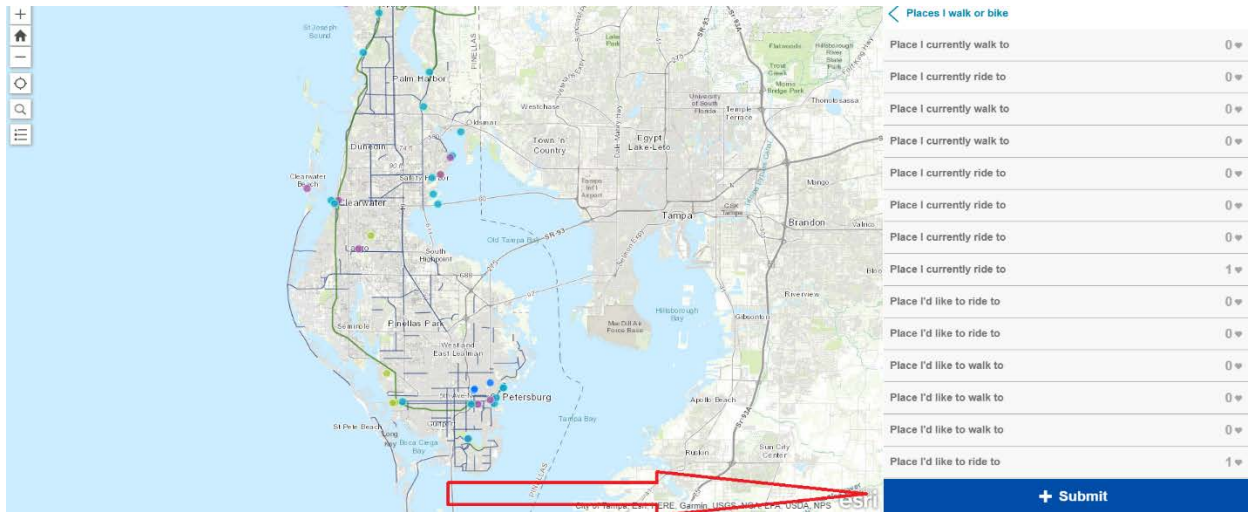
STEP 1: Follow this link to access the web tool

<https://egis.pinellascounty.org/apps/BikePedMasterPlan>

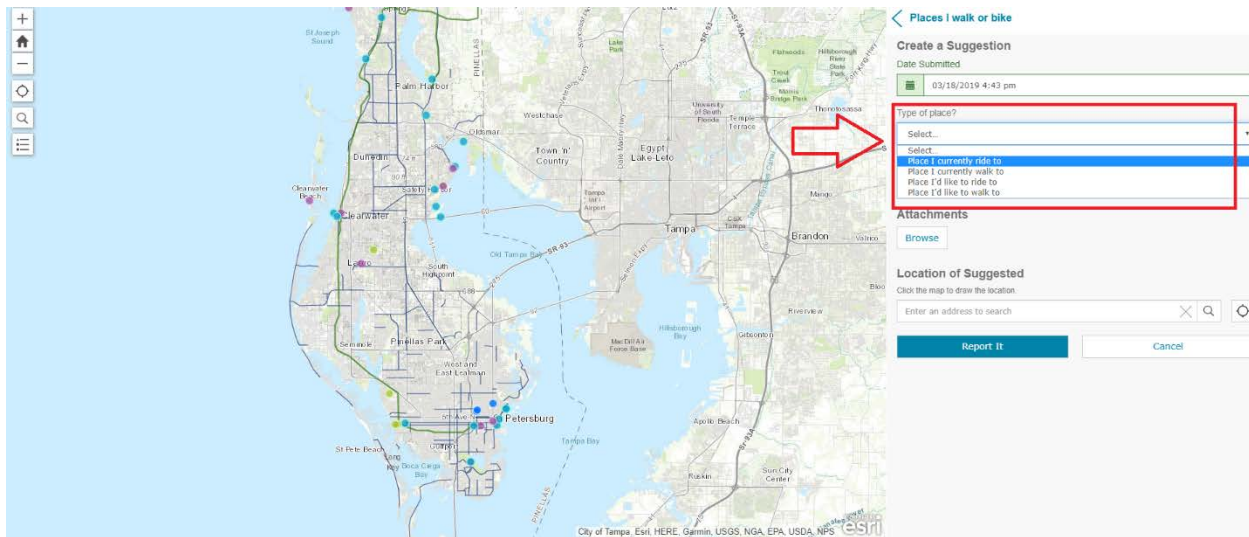
STEP 2: When the tool opens an 'about' tab will open informing the user that their responses will take 48 hours (roughly) to become visible on the application. X out of this tab and select one of the tabs in the right hand corner.

The screenshot displays the 'Bicycle Pedestrian Master Plan Data Viewer' web application. At the top, there is a navigation bar with the title 'Bicycle Pedestrian Master Plan Data Viewer' and a status indicator 'No issues detected'. Below this, a secondary navigation bar contains several tabs: 'Crowd Sourcing Tool', 'Bicycle Pedestrian Crashes 2013-2017', 'Activity Centers', 'Cultural Facilities', 'Level of Traffic Stress', and 'Equity Analysis'. The main content area features a map of Pinellas County, Florida, with various locations labeled such as Palm Harbor, Dunedin, Clearwater, St. Petersburg, and Petersburg. A sidebar on the left contains standard map controls like zoom in/out, home, and search. On the right side, a panel titled 'Advantage Pinellas: Active Transportation' is highlighted with a red border. This panel contains a list of four options for crowdsourcing data: 'Places I walk or bike', 'Routes I walk or bike', 'Routes I would like to walk or bike', and 'Obstacles to walking or biking'. Each option is presented as a text input field.

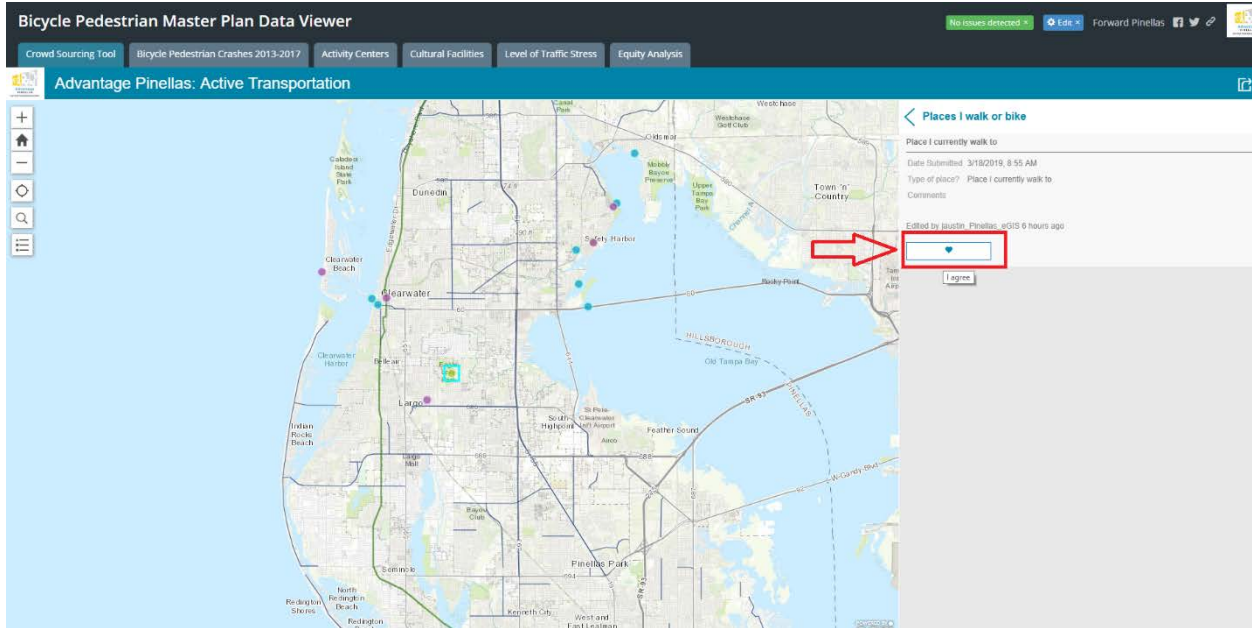
STEP 3: To add a point **FIRST** select the **+SUBMIT** button on the bottom right hand side of the screen. This is shown below:



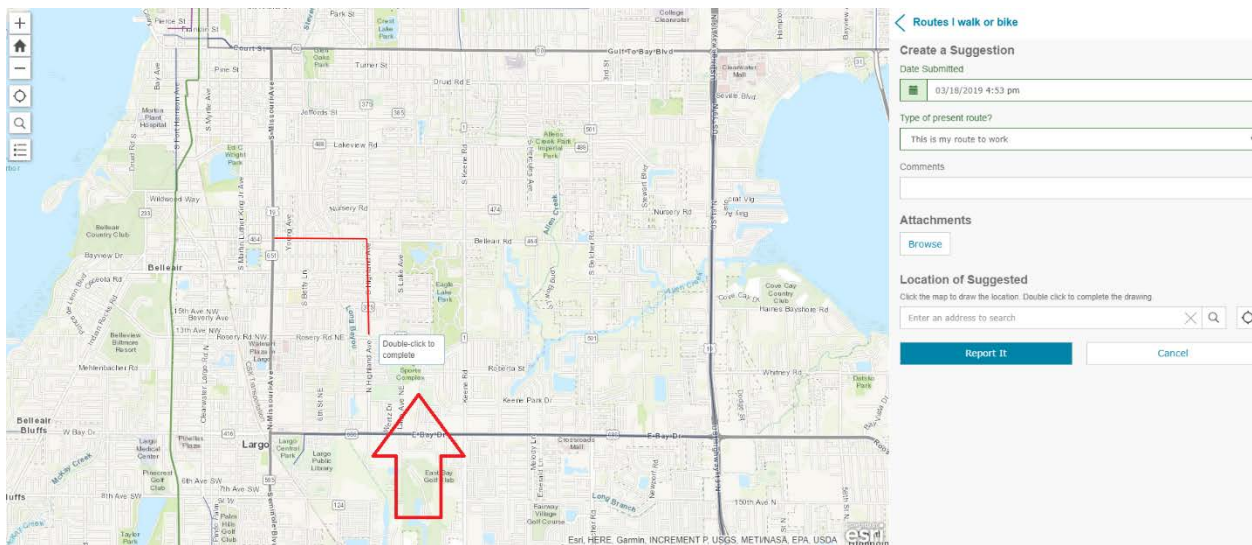
STEP 4: Once you click +SUBMIT fill out the information provided by the dropdowns and fill out any comments you feel necessary to include. **MAKE SURE TO SELECT A CATEGORY FROM THE DROPDOWN OR THE DATA WILL NOT POPULATE ON THE MAP.** See below:



STEP 5: If you log in and see someone has already added a destination, route, or obstacle that you agree with simply click that point or route that was logged and select the heart icon to indicate that you agree with the data that was already entered. This helps prevent duplication of points/routes that otherwise would clutter the map, but still provides us the feedback we need from users. See below:



NOTE: For all routes you wish to enter, when you get to the end of the route by route you must **DOUBLE CLICK** to complete the route, otherwise the route will not be logged. See below:



***All additional tabs outside of the crowd sourcing tool application are meant to provide more information to the user to help better visualize areas of concern, trail networks, local destinations, social equity, level of traffic stress, and more.*

***For optimum performance please use Google Chrome or Firefox browsers on a desktop computer or laptop.*

For any questions about this tool please contact **Jared Austin** at jaustin@forwardpinellas.org