



**SCHOOL TRANSPORTATION SAFETY  
COMMITTEE (STSC) AGENDA**

**October 3, 2018 – 9:00 a.m.**

310 Court Street, 1st Floor  
Planning Conference Room  
Clearwater, FL 33756

**THE PLANNING COUNCIL AND METROPOLITAN PLANNING ORGANIZATION FOR PINELLAS COUNTY**

---

1. **CALL TO ORDER AND INTRODUCTIONS**
2. **APPROVAL OF MINUTES – June 6, 2018**
3. **ROLE OF THE PINELLAS COUNTY SCHOOLS POLICE UNDER THE MAJORY STONEMAN DOUGLAS HIGH SCHOOL PUBLIC SAFETY ACT**
4. **SAFE ROUTES TO SCHOOL**
5. **131<sup>ST</sup> STREET INTERSECTION IMPROVEMENTS**
6. **OTHER BUSINESS**
  - A. SPOTLight Emphasis Area Update
  - B. Hazardous Walk Review
  - C. STEPS Program – Minutes & Agendas
  - D. Informational Items
    - STEPS Committee Meeting Schedule
    - STEPS Contacts
    - Safe Routes to School District 7 Workshop – October 8<sup>th</sup>, 2018
    - Safe Routes to School National Conference Flyer – November 12<sup>th</sup> – 14<sup>th</sup>, 2018
    - Safe Routes to School Improving Arrival Dismissal Safety
    - Safe Routes to School Partnership Report Card
  - E. Request for Future Agenda Topics
7. **ADJOURNMENT**

**Next Meeting: March 6, 2019**

*Public participation is solicited without regard to race, color, national origin, age, sex, religion, disability, or family status. Persons who require special accommodations under the Americans with Disabilities Act or persons who require translation services (free of charge) should contact the Office of Human Rights, 400 South Fort Harrison Avenue, Suite 300, Clearwater, Florida 33756; [(727) 464-4062 (V/TDD)] at least seven days prior to the meeting.*

*Persons are advised that, if they decide to appeal any decision made at this meeting/hearing, they will need a record of the proceedings and, for such purpose, they may need to ensure that a verbatim record of the proceedings is made, which record includes testimony and evidence upon which the appeal is to be based.*

**School Transportation Safety Committee – October 3, 2018**

**2. Approval of Minutes**



---

**SUMMARY**

The meeting summary for the June 6, 2018 meeting is attached for review and approval.

**ATTACHMENT(S):** STSC Meeting Summary – June 6, 2018

**ACTION:** Approval of Meeting Summary

**SUMMARY OF SCHOOL TRANSPORTATION SAFETY COMMITTEE  
MEETING OF JUNE 6, 2018**

The meeting was held on Wednesday, June 6, 2018, at 9:00 a.m., in the 1st Floor Planning Department Conference Room. Those in attendance were:

**Members Present:**

Peggy O'Shea (Chairman)	Pinellas County School Board
Mike Burke	Pinellas County Schools
Carol Cook	Pinellas County School Board
Commissioner John Carroll	City of Largo
Councilman Dr. Bob Cundiff	City of Clearwater
Commission Dave Eggers	Pinellas County (BCC)
Commissioner Heather Gracy	City of Dunedin
Doug Mullis	Citizen Representative
Councilmember Keith Sabiel	City of Pinellas Park
Councilmember Gina Driscoll	City of St. Petersburg

**Members Absent:**

Terry Huberty	Pinellas County School Board
Commissioner Jacob Karr	City of Tarpon Springs
Caroline Lanford	Pinellas County Planning
Rick McBride	Pinellas County School Board Transportation
Commissioner Gabby McGee	City of Oldsmar
Thomas McGinty	Pinellas County School Board Transportation
Commissioner Cliff Merz	City of Safety Harbor
Joshua Shulman	PSTA
Marshall Touchton	Pinellas County School Board
Councilmember Roger Edelman	City of Seminole

**Others Present:**

Paula Davis	Pinellas County Schools
Tiffany Seibel	Johns Hopkins Children Hospital/ Safe Routes to School
Casey Morse	Pinellas County Public Works Traffic
Joan Rice	Pinellas County Public Works Traffic
Sarah Hollenbeck	ABC Action News
Chelsea Favero	Forward Pinellas Staff
Sandra Knoebel	Forward Pinellas Staff
Maria Kelly	Forward Pinellas Staff

1. **CALL TO ORDER**

Chairperson Peggy O'Shea called the meeting to order at 9:00 a.m.

2. **APPROVAL OF MINUTES**

Carol Cook motioned approval of the summary of the October 4, 2017 meeting and the summary of the March 7, 2018 meetings. Commissioner Cundiff seconded and the vote passed unanimously.

3. **SECURITY AND SAFETY OF PUBLIC SCHOOLS DISCUSSION**

Ms. Peggy O'Shea, Chair, addressed the committee to open discussions on security and safety. She began with a brief update on where the School Board is at. Following the shooting in Parkland, the legislature passed the Marjorie Stoneman Douglas High School Public Safety Act. It was signed by the governor on March 9<sup>th</sup> and became law upon his signature. Prior to this shooting, Pinellas County Schools had already started a school hardening effort. Fencing around the schools and only one point of entry after the school day begins; visitors must sign in at the main office and present a drivers license for ID; store-front glass walls have been installed in the front office. Only after a successful screening, visitors will be allowed into the office. All schools have multiple cameras throughout the campus and each school has a confidential unique crisis plan. Active shooter drills will commence when school begins, once a month with faculty and students. Middle school and high schools already have resource officers. Upon the signing of the Act into law, three work groups were formed. The first group is the threat assessment group led by the Largo PD and they determined we are in compliance, and could be a model for the districts. The law requires each district to have a mental health plan; Florida Department of Education will be approving the plan. Pinellas County has contracted with Sandy Hook Promise; this is a group of people following the Sandy Hook shooting. They have received huge funding and have been working in school districts, for free, to train teachers and students on what to look for and what to do. The training level is different for each age/grade group. The second group, the School Hardening group was led by St. Petersburg PD; all schools will get a walk through by independent law enforcement to include the Principal, head plan operator, Pinellas County Schools police and local police. The third group was training and drill, led by the Sheriff and starting May 30<sup>th</sup>, the administrators received the act of assailant training, along with drills based on the run/hide/fight. Lock down procedures determine what everyone is supposed to do, based on the plan in place, sent out by Homeland Security. Questions were taken and appropriately answered. The act also mandated that an armed, trained resource officer will be assigned to every public school including elementary and charter schools. Funding has been the challenge for Pinellas County. PCSB currently contracts with the local police and Sheriff's Office for the SRO's. Guardians will be brought in to support the elementary schools until additional PCSB police can be hired and trained. There will be an officer in every school on August 13<sup>th</sup>, when school begins. Mike Burke, Pinellas County Schools, added that at the May 30<sup>th</sup> school board meeting, transportation staff presented information on the safety features on the school buses. Two years ago all radios were upgraded to allow for secure conversations with the local police officers without being monitored. There is also an emergency button on the floor that can be stepped on to activate the open mic, which is connected to dispatch. The newer buses are being equipped with 360° cameras. Questions were taken and appropriately answered.

4. **BIKE HELMET PROGRAM**

Casey Morse with Pinellas County Traffic Engineering addressed the committee with information regarding the Bike Helmet program. Several members of Pinellas County Public Works Transportation received bicycle helmet fitting training through Johns Hopkins Children's Hospital. After receiving their certification, these members headed out to Central

Elementary, where more than two hundred children were properly fitted for bicycle helmets. A safety grant issued to the University of Florida through FDOT, allows University of Florida to purchase and supply these helmets free of charge. Casey Morse and her team are available to visit recommended schools based on supply. Questions were taken and appropriately answered.

**5. HAZARDOUS WALKING CONDITIONS REPORT**

Mr. Burke shared the results from the Hazardous Walking Conditions survey that was done with all the municipalities. There are 890 potential bus riders in declared hazard zones. South of Drew Street, the stops are all flyovers which would require crossing guards are each side of the road. Booker Creek Elementary in the East Lake corridor has over 4,000 cars per hour. This one was moved from funded to unfunded. Questions were taken and appropriately answered.

**6. OTHER BUSINESS**

**A. Pinellas SPOTlight Emphasis Areas Update**

Sandra Knoebel, Forward Pinellas staff, updated the committee on the SPOTlight Emphasis Areas.

**B. Bike Your City**

Ms. Knoebel shared information on this year's Annual Bike Your City event, which was held in St. Pete Beach. Next year's event will be held in Largo.

**C. STEPS Program**

Mr. Burke talked about one of the long standing issues of the crossing on Alt. 19 and Delaware which is used by the Palm Harbor University Students. FDOT did contract this year to add additional crosswalks on Alt. 19. Street lighting will be added to the crosswalks as well as RRFBs.

**D. Informational Items**

Summer Bridge and Bell Times – Summer Bridge is the summer school program for Pinellas County.

A list of Crossing Guard locations was provided in the agenda packet.

School Bus Safety Tip Card – Mr. Burke shared with the committee the community traffic safety team interactions with FDOT and traffic officers to provide a diagram of when you can and cannot pass a school bus. 10,000 cards have been ordered for distribution throughout Pinellas County Schools. More have been ordered to pass out throughout the state as well as into visitor centers. Two dozen posters will go into the driver education classes. Reports for bus stop arm violations are coordinated with the drivers and the community traffic safety team to advance them to the law enforcement agencies.

**E. Requests for Future Agenda Topics**

Retired Police Chief Williams from St. Petersburg will be asked to join us next meeting date October 3, 2018.

Tiffany Sabiel from Johns Hopkins Children's Hospital/Safe Routes to School, will be presenting Safe Routes to School at the October 3, 2018 meeting.

Seminole Area Safety Enhancements – asked Pinellas County Public Works Traffic to provide an update on the status of the 131<sup>st</sup> Street and 86<sup>th</sup> Avenue projects.

F. **Comments**

Ms. O’Shea stated that safety enhancements are needed in Seminole with a lot of schools in close proximity to one another and a new high school going in. Pinellas County came in to share a presentation with the school board and offered three options to fix the problem. There has been no updates since. Mr. Burke said this was regarding improvements the Seminole intersection of 86<sup>th</sup> and 131<sup>st</sup>, and this project should begin in 2019. It will include upgrades of turn lanes and sidewalk enhancements. Public Works Traffic will look into the schedule and notify Mr. Burke of any updates.

Doug Mullins, Citizen Representative stated he was very impressed with what the committee was doing, but very disappointed that 131<sup>st</sup> Street and 86<sup>th</sup> Avenue hasn’t been brought up to safety standards yet.

7. **ADJOURNMENT**

The Committee adjourned at 10:18 am.

## **School Transportation Safety Committee – October 3, 2018**



### **3. Role of the Pinellas County Schools Police under the Marjory Stoneman Douglas High School Public Safety Act**

---

#### **SUMMARY**

On March 9, 2018, the Marjory Stoneman Douglas High School Public Safety Act was signed into law by the Governor. The law requires at least one “safe school officer” at every school. Since the Law was not sufficiently funded, local school districts have taken alternative approaches to complying with it.

The Pinellas County School System opted to expand the presence of resource officers throughout the district. On March 1, Luke Williams was hired as the Chief of the Pinellas County Schools Police. He is responsible for managing the expanded force of resource officers while making sure the provisions of the Public Safety Act are carried out. Prior to joining the School System, Luke Williams was an Assistant Chief with the St. Petersburg Police Department for 18 years. He will be in attendance at the meeting to discuss his role and responsibilities as well as the mission, objectives and activities of the Pinellas County Schools Police.

**ATTACHMENT(S):** None

**ACTION:** None Required, Informational Item Only

---

**SUMMARY**

Florida's Safe Routes to School (SRTS) program is designed to make it safer for more school children to walk or bicycle to school by funding specific projects that install or improve infrastructures. The Program also provides education and encouragement aimed at parents, children and the community to achieve this goal. Involving the community, such as schools, teachers, local agencies, businesses and transportation professionals ensures the development of integrated and sustainable safety solutions.

The resulting benefits of children walking or biking to school are reduced traffic congestion and fuel consumption, and improved air quality. The children in turn, benefit from a sense of freedom, responsibility and accomplishment, as well as jump-starting the school day with a fresh mind.

Ms. Rachele Webb, Safe Routes to School Community Educator, will present information regarding the Safe Route to School Program in Pinellas County.

**ATTACHMENTS:** SRTS.org – Starting Your SRTS Program  
SRTS E-News Letter February 2018

**ACTION:** None Required, Information Item Only





## State Safety Office

State Safety Office / Programs / Safe Routes to Schools

### Safe Routes to Schools (SRTS)



#### Starting your SRTS Program

The SRTS Program is unique in its overriding emphasis on community participation in the development and implementation of projects and programs. Community participation involves the public, schools, parents, teachers, children, local agencies, the businesses community, key professionals, and others in the development of proposals. The resulting safety solutions are comprehensive, integrated and sustainable.

The basic steps to follow when starting a local SRTS program are as follows:

**Bring the right people together.** Identify people who want to make walking and biking to school a safe and appealing alternative. Ideally, representatives from the 5 E's will be included.

**Engineering** – Local county or city engineer - Creating operational and physical improvements to the infrastructure surrounding schools that reduce speeds and potential conflicts with motor vehicle traffic, and establish safer and fully accessible crossings, walkways, trails and bikeways.

**Education** – Teachers - Teaching children about the broad range of transportation choices, instructing them in important lifelong bicycling and walking safety skills, and launching driver safety campaigns in the vicinity of schools.

**Encouragement** – PTA or School Staff - Using events and activities to promote walking and bicycling.

**Enforcement** – Local Law Enforcement - Partnering with Local Law Enforcement to ensure traffic laws are obeyed in the vicinity of schools (this includes enforcement of speeds, yielding to pedestrians in crossings, and proper walking and bicycling behaviors), and initiating community enforcement such as crossing guard programs.

**Evaluation** – Designated person - Monitoring and documenting outcomes and trends through the collection of data, including the collection of data before and after the intervention(s).

**Hold a kick-off meeting** to explain the Safe Routes to School Program, create a positive vision for your program and secure buy-in. This meeting should create a vision and generate next steps.

**Gather information and identify issues.** This will be used for mapping out how to improve pedestrian and bicycle travel to and from school, increase the number of students walking and biking to school, and to improve safety.

**Identify solutions.** Each issue identified will have a unique solution to address it made up of the 5 E's.

**Create a Student Travel Plan** that will identify short term solutions for immediate action and implementation as well as long term ones that may require further planning.

- Where students currently walk and bike?
- Where students would walk and bike if they could?
- What changes need to be made so that students can and will walk and bike to school?

**Get the plan and people moving.** Take advantage of opportunities that can be implemented with little or no cost while waiting for other parts and keep the big picture in mind.

**Evaluate, adjust and keep going.** As the program is implemented, monitor the impact it is making and the effectiveness of each strategy. Keep on with ones that are working well and modify those that are not providing satisfactory outcomes.





### February E-News Contents

1. [Kaiser Permanente Renews Commitment to Safe Routes](#)
2. [Walk Audits and Safe Routes to School: NEW Resources](#)
3. [Safe Routes to Parks - Apply Today!](#)
4. [Webinar: Volunteer Engagement in Safe Routes to School](#)
5. [Voices for Healthy Kids 2017 Progress Report](#)
6. [Coaching and Technical Assistance to Accelerate Change](#)
7. [Community Partnership Brings Change to Moscow, Idaho](#)
8. [#MoveEquity Tweekat Series Returns in 2018](#)

### Kaiser Permanente Renews Commitment to Safe Routes



**KAISER PERMANENTE®**

The Safe Routes to School National Partnership is pleased to announce that Kaiser Permanente is awarding a two-year grant of \$1.26 million to advance Safe Routes to School initiatives and policy nationwide and in specific regions. The award will support the Regional Network Project, which advances healthy transportation options at the metropolitan level in California and the Northwest, and will allow the National Partnership to produce action-oriented engagement materials, training webinars, toolkits, and other resources to help both new and experienced practitioners start and run thriving Safe Routes to School programs. Learn more in our [full announcement](#).

## Walk Audits and Safe Routes to School: NEW Resources



Knowing your school surroundings and neighborhood is a good start for any Safe Routes to School program. Jump into Safe Routes to School with tools for conducting walk audits or making a walking route. Want to grow your existing Safe Routes to School program? Use the [Walk Audit Toolkit](#) to evaluate your current walking environment or use the [Guide to Creating Walking Route Maps for Safe Routes to School](#) to engage more students and staff. For questions about these resources email [hannah@saferroutespartnership.org](mailto:hannah@saferroutespartnership.org)

## Safe Routes to Parks - Apply Today!

The JPB Foundation has provided a grant to the National Partnership to fund the Safe Routes to Parks program to increase safe and equitable access to parks. The program will provide training, coaching and technical assistance to support the development of action plans to improve safe and equitable park access in a total of 20 diverse communities across the nation over the next two years. Nationally available resources will also be developed to advance the work and virtually support other communities seeking to implement the Safe Routes to Parks framework locally. Applications just opened for year one and 10 communities will be selected to begin work this Spring. [Apply today!](#)



## Webinar: Volunteer Engagement in Safe Routes to School

Safe Routes to School programs across the country know that volunteers are the heart and soul of the movement providing support for walking and biking to school at all levels every day of the school year through all types of challenges and weather. But how do programs engage volunteers to ensure smooth running programs? Join us while we talk with practitioners that have developed successful volunteer engagement strategies to boost health and safety in their community through Safe Routes to School. [Register here.](#)

## Voices for Healthy Kids 2017 Progress Report

The National Partnership is a partner in building support for healthy kids and communities through our work with the American Heart Association and the Robert Wood Johnson Foundation. The initiative has released [Making Each Day Healthier for All Children: 2017 Progress Report](#). The report highlights progress in the advocacy movement, including policy wins and a behind-the-scenes look at campaigns to increase health equity, improve access to healthy foods and physical activity, and improve the places where families live, learn, work, and play.

## Coaching and Technical Assistance to Accelerate Change



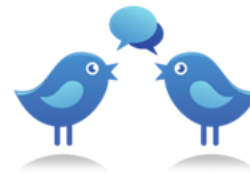
Each community is unique. Through our individualized technical assistance the National Partnership staff can provide strategic support to local, regional, and state program and policy leaders. Once we understand your needs, our expert staff can develop a proposal for work to help guide your policy and programmatic

change efforts. Reach out to the National Partnership Policy and Program Director Sara Zimmerman [sara@saferoutespartnership.org](mailto:sara@saferoutespartnership.org) to learn more and get started.

### Community Partnership Brings Change to Moscow, Idaho

Moscow, Idaho is a community of 25,000, located eight miles from Washington State with a bike path that connects the University of Idaho in Moscow to the University of Washington. Initially, active transportation efforts were focused more on enjoyment of the outdoors and connection with schools, with little attention paid to the safety component. This started to change roughly 10 years ago when the University of Idaho partnered with the City of Moscow on the area's Safe Routes to School initiatives – the city took on engineering with the University covering the rest of the E's. [Read more here.](#)

### #MoveEquity Tweetchat Series Returns in 2018



Join peers, partners and new friends as we continue our #MoveEquity tweetchat series on February 28<sup>th</sup> at 2PM ET.

Copyright © 2018 Safe Routes to School National Partnership, All rights reserved.

You're receiving this message because you have expressed interest in improving walking, bicycling, and Safe Routes to School. If you no longer wish to receive emails like these, please unsubscribe.

#### **Our mailing address is:**

Safe Routes to School National Partnership  
PO Box 44328  
Fort Washington, MD 20749

[Add us to your address book](#)

**5. 131<sup>st</sup> Street Intersection Improvements**

---

**SUMMARY**

Intersection improvements on 131<sup>st</sup> Street at 82<sup>nd</sup> Avenue and 86<sup>th</sup> Avenue in Seminole are scheduled for construction in the current fiscal year of the Pinellas County Capital Improvement Program. Seminole High School is located on the northeast corner of the 82<sup>nd</sup> Avenue intersection and the southeast corner of the 86<sup>th</sup> Avenue intersection. Seminole Middle School is located on the northeast corner of the 86<sup>th</sup> Avenue intersection. The improvements are intended to enhance the safety and operations of the corridor for all users, including vehicles, pedestrians and bicyclists.

Design plans for this project have been completed. Pinellas County Traffic Engineering staff is currently working with the School Board on acquiring the necessary easements.

Joan Rice with Pinellas County Traffic Engineering will be in attendance at the meeting to discuss the improvements and associated construction schedule.

**ATTACHMENT(S):** Map of Intersection Locations

**ACTION:** None Required, Informational Item Only

# 131<sup>st</sup> Street Intersection Improvements



**6A-E. Other Business**

---

**A. Pinellas SPOTlight Emphasis Areas Update**

• **US 19 Vision**

Forward Pinellas planning consultant HDR, Inc. presented their preliminary findings of an operational analysis on 34<sup>th</sup> Street in St. Petersburg at a meeting at the St. Petersburg Municipal Services Center on August 20. The purpose of the analysis is to determine the feasibility of eliminating the outside through lanes on 34<sup>th</sup> Street from 22<sup>nd</sup> Avenue South to 54<sup>th</sup> Avenue South in support of a complete streets concept pursuant to the redevelopment plans of the Skyway Marina District. Along with HDR, representatives of the City of St. Petersburg, FDOT, Forward Pinellas, Eckerd College and the Skyway Marina District were in attendance.

Forward Pinellas hosted a business roundtable meeting on August 22<sup>nd</sup> at the St. Petersburg College Tarpon Springs Campus. The purpose of the meeting was to provide an opportunity for local business owners to ask questions and provide input regarding scheduled and planned improvements on US 19 in north Pinellas County. Staff members representing FDOT, the Pasco County MPO, Forward Pinellas and Pinellas County Planning were also in attendance along with Commissioner Dave Eggers.

• **Gateway Area/Mid-County Master Plan**

The Gateway Area/Mid-County Master Plan effort has completed an analysis of existing conditions in the study area and identified preliminary sub-areas for further study. The study management team will begin taking a closer look at those sub-areas, including traffic circulation issues, land use category inconsistencies, utility conflicts and environmental opportunities to help improve the economic vitality of the area.

• **Beach Access**

Forward Pinellas continues to work with local governments, agency partners, and waterborne transportation service providers to develop a comprehensive governance structure for water taxi and ferry operations. Current discussions involve the creation of a “consortium” of participating local governments that would enter into an inter-local agreement with the selected vendor for waterborne transportation services. Another element of this approach is the development of a sustainable funding strategy which includes resources to fund capital as well as operating costs of the water taxi/ferry service.

**ACTION:** None Required, Informational Item Only

**B. Hazardous Walk Review**

Pinellas County School District staff will give a brief overview of their recently completed report on hazardous walking conditions.

**ATTACHMENT(S):**

- DOE Technical Assistance Hazardous Review
- Final Hazardous Walk Review Report
- 2018 Hazardous Rev Sign
- 2018 Hazardous Rev Attendees

**ACTION:** None Required, Informational Item Only

**C. STEPS Program – Minutes & Agendas**

The School Transportation and Enhanced Pedestrian Safety (STEPS) Committee is facilitated by the Pinellas County School Board and was created as a forum to discuss and address traffic safety issues around Pinellas County Schools. The STEPS committee consists of technical planning/engineering staff from the local governments and agencies throughout the County. Attached are meeting summaries and agendas from their meetings since the last STSC, as well as a copy of their meeting schedule.

**ATTACHMENT(S):**

- STEPS Minutes June 20, 2018
- STEPS Agenda July 18, 2018
- STEPS Minutes July 18, 2018
- STEPS Agenda August 15, 2018
- STEPS Minutes August 15, 2018
- STEPS Agenda September 19, 2018

**ACTION:** None Required, Informational Item Only

**D. Information Items**

**ATTACHMENT(S):**

- STEPS Committee Meeting Schedule 18-19
- STEPS Contacts
- Safe Routes to School (SRTS) District 7 Workshop – October 8, 2018
- SRTS National Conference Flyer – November 12<sup>th</sup> – 14<sup>th</sup>, 2018
- SRTS Improving Arrival Dismissal Safety – July 19, 2018
- SRTS Partnership Report Card 2018

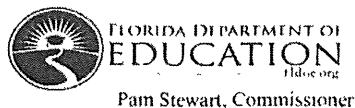
**E. Request for Future Agenda Topics**

The STSC members may discuss any suggestions for future agenda topics.



# TECHNICAL ASSISTANCE NOTE

No. 2015-01



Pam Stewart, Commissioner

School Business Services  
School Transportation Management

Contact: Jamie Warrington  
Phone: 850-245-9795

## Hazardous Walking Conditions Determination and Student Data Reporting Revisions for 2015-16

---

**TO:** District Transportation and MIS Directors

**FROM:** Mark Eggers, Assistant Deputy Commissioner  
Division of Finance and Operations *Mark Eggers*

**DATE:** November 5, 2015

**SUBJECT:** Hazardous Walking Conditions Determination and Student Data Reporting Revisions for 2015-16

Chapter 2015-101, Laws of Florida, made revisions to the criteria used to determine a hazardous walking condition and to the procedures for identification and inspection of the perceived hazardous location. Attached is a checklist that districts and governmental road jurisdictions may use when inspecting locations to determine whether or not a location meets the statutory criteria.

### Background Information

Section 1011.68(1)(c), Florida Statutes (F.S.), authorizes funding for elementary school students who live less than two miles from their assigned school when subjected to hazardous walking conditions described in section 1006.23(2), F.S. The two basic determinants of eligibility are described below.

1. The grade level and type of school. Only students who attend elementary school and do not exceed grade six are eligible for transportation. Under state law, students in sixth grade or higher who attend middle school are not eligible for transportation due to hazardous walking conditions.
2. The condition of the walking route between home and the assigned school. A walking route is only considered "hazardous" for the purpose of determining eligibility for transportation and state funding if one or more locations along the walking route meet the specified statutory criteria. These criteria include traffic counts, speed limits, the presence of traffic control devices, the number of traffic lanes a student must cross and the nature of the walking surface and its distance from the road.

### Revised Criteria to Identify Hazardous Walking Condition

Following are revised criteria for determining hazardous walking conditions for public school students who walk parallel to the roadway, as provided in section 1006.23(2)(a), F.S.:

- An area must be at least four feet wide adjacent to the road for students to walk to and from school. The revised language excludes drainage ditches, sluiceways, swales and channels;
- The posted speed limit was revised from 55 miles per hour to 50 miles per hour or greater. The requirement that uncurbed roads have at least a three-foot buffer from the edge of the road to the required four-foot area on which students walk to and from school was not revised; and
- Residential roads with little or no transient traffic may still present hazardous walking conditions.

The traffic volume criteria for roads with controlled and uncontrolled intersections were not revised. However, the criteria used to identify hazardous walking conditions for students who may be “crossing over the road” (currently known as “walkways perpendicular to the road”), were expanded in section 1006.23(2)(c), F.S., to include any road with an uncontrolled crossing site if the road has:

- A posted speed limit of 50 miles per hour or greater; or
- Six lanes or more, not including turn lanes, regardless of the speed limit.

#### Agency Staff Who Determine a Hazardous Walking Condition

When a request for review is made to the district school superintendent or the district school superintendent's designee concerning a condition perceived to be hazardous to students in that district who live within the two-mile limit and who walk to school, the revised language in section 1006.23(3)(a), F.S., states that such condition shall be inspected jointly by representatives of:

- The school district;
- The state or local government with jurisdiction over the road;
- The municipal police department for a municipal road, the sheriff's office for a county road or the Department of Transportation for a state road; and
- The metropolitan planning organization, if the jurisdiction is within an area for which one exists.

Prior to the revision, only a representative from the school district and a representative from the governmental entity with jurisdiction over the road performed the inspection.

### Procedure to Determine Hazardous Walking Condition

The following requirements in section 1006.23(3), F.S., regarding procedures for identifying, inspecting and determining hazardous walking condition locations were added to the law.

The district school superintendent or his or her designee and the applicable state or local government and law enforcement representatives shall make a final determination that is mutually agreed upon regarding whether the hazardous condition meets the state criteria pursuant to section 1006.23(2), F.S. If the representatives agree that the condition constitutes a hazardous walking condition, they must report the determination, in writing, to the district school superintendent. The district school superintendent must then request a position statement regarding the correction of the condition from the state or local government with jurisdiction over the roadway. Within 90 days after receiving a request to correct a hazardous walking condition, the state or local government must inform the district school superintendent whether it will include the correction in its next annual five-year transportation work program and, if so, when the correction is scheduled to be completed. If the hazardous walking condition is not included in the five-year transportation work program, justification must be provided in writing to the district school superintendent and the Florida Department of Education (FDOE) regarding such omission.

If the government representatives are unable to reach a consensus on whether a location meets the hazardous walking criteria, they must report their findings to the district school superintendent. The district school superintendent must then submit a report and recommendation to the district school board regarding the location. A school board may initiate a proceeding seeking a declaratory judgment as to whether the condition constitutes a hazardous walking condition after providing at least 30 days' notice in writing to the state or local government with jurisdiction over the road. The district school board is responsible for providing evidence of the hazardous walking condition. If the district school board obtains a declaratory judgment, the superintendent must report the finding to FDOE and formally request correction of the hazardous condition. The state or local governmental entity with jurisdiction over the road is required to correct the hazardous condition within a reasonable period of time, pursuant to section 1006.23(4)(a), F.S.

### Required Documentation

School districts are required to have in writing and on file documentation identifying the hazardous locations, the date each location was inspected, the agency representatives who participated in the inspection, and the specific conditions verifying that the location meets the qualifying statutory criteria (for example, traffic counts during the time students would walk and the speed limit). Documentation must also be maintained to verify that agency representatives formally and mutually agreed that the location meets the qualifying criteria specified in section 1006.23(2), F.S. The attached form, *Hazardous Walking Site Review Checklist*, provides such documentation.

District Transportation and MIS Directors  
November 5, 2015  
Page Four

#### Hazardous Walking Database Reporting

School districts must review and update the hazardous walking locations in the FDOE web-based system on a per-survey basis no later than the end of each survey week. The projected completion date must be reported. Any locations in the database with an "NA" listed for the completion date **must** now reflect an actual date. For hazards that will not be corrected by the roadway jurisdiction, please enter "01/01/9999."

To review and update your school district's hazardous walking locations database, please go to <http://info.doe.state.fl.us/walking/default.cfm>.

#### Student Reporting

School districts are required to report the six-digit Hazardous Walking Location code for each student claimed in Membership Category G (Hazardous Walking, Elementary, Unweighted). Note that a code of 000000 is not recognized for funding purposes.

Only students who are eligible for hazardous walking conditions may be reported. A student for which the hazardous walking condition has been corrected may not be reported, and a student may not be reported after the projected completion date, pursuant to section 1006.23(4)(c), F.S.

If you have questions or concerns, please contact Jamie Warrington at [Jamie.Warrington@fldoe.org](mailto:Jamie.Warrington@fldoe.org) or 850-245-9795.

ME/jw

Attachment: Hazardous Walking Site Review Checklist

cc: District Charter Schools

### Hazardous Walk Review PCS/Interagency

Sch #	School Name	Haz Type	Committee Review Date	Hazard Street	Hazard From	Hazard To	Traffic Count (Per/Hr)	FDOT Station	Hazard Code #	Edulog Boundary ID	State Record ID	Gov. Entity	# bus	Student Count	<2 miles	Unfunded	funded	Comments
<b>SOUTH COUNTY</b>																		
011	Azalea ES	Unfunded	4/17/2018	66th St N	Tyrone Blvd N	5th Ave N	3498	15 5114 3/16/16		1783			5	516	280	30		east side of 66th St
011	Azalea ES	Unfunded	4/17/2018	Treasure Island Cswy	Paradise Ln	Sunset Dr	AADT 20000	15 9189 2016		147			"	"	"	3		no sidewalks, 35mph
016	Bay Point ES	Unfunded	4/17/2018	34th St S	38th Ave S	7rd Ave S	2370	15 5078 3/2/16		1782			7	560	198	2		
023	Bay Vista Fund	NA	4/17/2018										0	555	198	0		
027	Bear Creek ES	NA	4/17/2018										1	316	239	0		
048	Campbell Park ES	NA	4/17/2018										6	563	520	0		
182	Douglas Jamerson ES	Unfunded	4/17/2018	34th St N	13th Ave N	39th Ave S	2923	15 5082 3/16/16		1726			8	526	148	28		
121	Fairmount Park ES	NA	4/17/2018										4	496	446	0		ped bridge by Gibbs
169	Gulfport ES	Unfunded	4/17/2018	34th St S	13th Ave S	30th Ave S	2370	15 5078 3/2/16		144			5	568	325	1		
202	Lakewood ES	NA	4/17/2018										2	414	379	0		
142	Lynch ES	Unfunded	4/17/2018	34th St N	67th Ave N	58th Ave N	3945	15 5144 3/1/16		173			3	578	536	0		
228	Maximo ES	Unfunded	4/17/2018	34th St S	22nd Ave S	Paradise Pointe Cir S	2370	15 5078 3/2/16		146			2	405	348	3		
237	Melrose ES	Unfunded	4/17/2018	34th St S	4th Ave S	24th Ave S	2370	15 5078 3/2/16		1751			1	442	434	1		
456	Midtown Academy	NA	4/17/2018										2	168	100	0		
253	Mount Vernon ES	Unfunded	4/17/2018	34th St N	30th Ave N	1st Ave N	3206	15 5085 2/17/16		1599			5	392	325	50		
459	New Heights ES	Unfunded	4/17/2018	34th St N	68th Ave N	11th Ave N	3182	15 5084 3/16/16		230			7	653	589	342		
269	North Shore ES	NA	4/17/2018										5	293	117	0		
015	Bauder ES	NA	4/17/2018										1	690	540	0		
039	Blanton ES	NA	4/17/2018										3	550	447	0		
631	Gulf Beaches	NA	4/17/2018										2	292	30	0		
214	Lealman ES	Unfunded	4/17/2018	US Hwy 19 N	80th Ave N	32nd Ave N	3945	15 5144 3/1/16		1641			3	403	388	187		62nd Ave N is north attend boundary

### Hazardous Walk Review PCS/Interagency

Sch #	School Name	Haz Type	Committee Review Date	Hazard Street	Hazard From	Hazard To	Traffic Count (Per/Hr)	FDOT Station	Hazard Code #	Edulog Boundary ID	State Record ID	Gov. Entity	# bus	Student Count	<2 miles	Unfunded	funded	Comments
279	Northwest ES	NA	4/17/2018										4	495	396	0		
302	Orange Grove ES	NA	4/17/2018										1	339	261	0		
147	Perkins ES	Unfunded	4/17/2018	34th St N	Central Ave	30th Ave S	2370	155078 3/2/16		1626			7	530	122	19		
376	Sanderlin ES	Unfunded	4/17/2018	34th St S	5th Ave S	42nd Ave S	2370	155078 3/2/16		1848			7	556	96	7		
375	Sawgrass ES	NA	4/17/2018										6	561	174	0		
391	Seminole ES	NA	4/17/2018										2	513	437	0		
396	Seventy-Fourth St ES	NA	4/17/2018										5	486	428	0		
126	Sexton ES	Unfunded	4/17/2018	34th St N	72nd Ave N	40th Ave N	3945	155144 3/1/16		175			4	538	460	2		
402	Shore Acres ES	NA	4/17/2018										5	578	341	0		
477	Westgate ES	NA	4/17/2018										1	520	486	0		
493	Woodlawn ES	Unfunded	4/17/2018	34th St N	28th Ave N	7th Ave N	3206	155085 2/17/16		172			3	325	219	0		
012	Azalea MS	NA	4/17/2018										18	965	158	0		
017	Bay Point MS	Unfunded	4/17/2018	34th St S	50th Ave S	Sunshine Skyway Lane	545	152703 9/27/16		343			19	1007	333	2		
406	John Hopkins MS	Unfunded	4/17/2018	34th St S	1st ave S	11th Ave S	2923	155082 3/16/16		114			10	887	515	0		
215	Lealman Int	Unfunded	4/17/2018	34th St N	26th Ave N	76th Ave N	3945	155144 3/1/16		41			13	512	52	17		
232	Meadowlawn MS	Unfunded	4/17/2018	34 St N	Haines Rd N	53rd Ave n	3945	155144 3/1/16		118			12	1070	689	0		
393	Seminole MS	NA	4/17/2018										14	1131	454	0		
463	Thurgood Marsh MS	Unfunded	4/17/2018	34th St S	1st Ave S	46th Ave S	2370	155078 3/2/16		1784			14	975	161	38		
461	Tyrone MS	NA	4/17/2018										14	964	256	0		
043	Boca Ciega HS	NA	4/17/2018										18	1709	557	0		
153	Gibbs HS	NA	4/17/2018										21	1239	449	0		

**Hazardous Walk Review  
PCS/Interagency**

Sch #	School Name	Haz Type	Committee Review Date	Hazard Street	Hazard From	Hazard To	Traffic Count (Per/Hr)	FDOT Station	Hazard Code #	Edulog Boundary ID	State Record ID	Gov. Entity	# bus	Student Count	<2 miles	Unfunded	funded	Comments		
203	Lakewood HS	Unfunded	4/17/2018	34th St S	46th Ave S	58th Ave S	2137	155117,2/16/16		52			14	1072	441	0				
264	Northeast HS	NA	4/17/2018										14	1733	782	0				
380	PTEC South HS	NA	4/17/2018																	
392	Seminole HS	NA	4/17/2018										20	1912	675	0				
378	St Petersburg HS	Unfunded	4/17/2018	34th St N	28th Ave N	13th Ave S	3206	155085 2/17/16		278			18	1929	538	143				
					<b>MID COUNTY</b>															
005	Anona ES	Paral.	4/24/2018	Indian Rocks RD	Wilcox Rd	Honeysuckle Rd	AADT 14500	15 9208 2016	070052	1786	3001	C	4	402	271		30	Deep Ditches - Impaired walkpath - 35mph		
005	Anona ES	Unfunded	4/24/2018	Bridge	Indian Recks Cswy					247			"	"	"	27		R. McBride approved due to bridge		
013	Bardmoor ES	Paral.	4/24/2018	Starkey Rd	Largo Lakes Blvd	94th Ave N	AADT 30000	15 9195 2016	110132	181	3647	C	6	482	304	0	0	Ditches - Impaired walkpath - 45mph		
032	Belcher ES	Unfunded	4/24/2018	US Hwy 19 N	Cove Cay Dr	Nursery Rd			050321	294	2449	C	6	617	345	12		unfunded,2016, Belleair Rd fly over		
032	Belcher ES	Perp.	4/24/2018	SR686/East Bay Dr	US Hwy 19	Plumosa Dr	4842	15 5304 5/24/2016	110322	179	3648	A	"	"	2		2			
081	Cross Bayou ES	Unfunded	4/24/2018	Bryan Dairy Rd	Belcher Rd	62nd St N				1465			8	415	275	52		fly over		
136	Fuguitt ES	Unfunded	4/24/2018	SR688/Ulmerton Rd	Railroad Ave	Lake Ave SE	AADT41000	15 5069 6/21/2016	051363	1616	2472	C	6	530	258	28		construction completed, full sidewalks, change to Perp.		
136	Fuguitt ES	Unfunded		119th St N	W of Pinellas Trl	S of Ulmerton										32		School Board, lack of crossing guards		
136	Fuguitt ES	Perp.	4/24/2018	SR688/Ulmerton Rd	Coral Way	113th St	4032	15 3032 06/28/2016	101362	150	3556	C	"	"	2		2	construction completed, full sidewalks, change to Perp.		
243	Mildred Helms ES	NA	4/24/2018										4	567	410	0				
336	Pinellas Central ES	Unfunded	4/24/2018	US Hwy 19 N	Gateway Blvd	Ulmerton Rd			053361	1630	2506	D	8	560	264	0		US 19 flyover @110th Ave N		
339	Pinellas Park ES	Perp.	4/24/2018	US Hwy 19 N	66th Ave N	49th St N	5419	15 5029 2/16/16	053391	1652	2509	D	5	555	448	0	54	Park Blvd flies over US19, ped crossing at US19 level		
346	Ponce De Leon ES		4/24/2018										4	496	459	0				
435	Rawlings ES	NA	4/24/2018										2	573	544	0				
417	Skyview ES	Unfunded	2/18/2016	66th St N	Park Blvd	Regent Blvd							2	586	569	3				

### Hazardous Walk Review PCS/Interagency

Sch #	School Name	Haz Type	Committee Review Date	Hazard Street	Hazard From	Hazard To	Traffic Count (Per/Hr)	FDOT Station	Hazard Code #	Edulog Boundary ID	State Record ID	Gov. Entity	# bus	Student Count	<2 miles	Unfunded	funded	Comments
417	Skyview ES	Perp.	4/24/2018	US Hwy 19 N	106th Ave N	Mainlands Blvd	5419	15 5029 2/16/16	104171	160	3564	D	"	"	"	"	0	
417	Skyview ES	Perp.	4/24/2018	US Hwy 19 N	Gateway Blvd	82nd Ave	5419	15 5029 2/16/16	104172	159	3565	D	"	"	"	"	0	
417	Skyview ES	Perp.	4/24/2018	SR694/Park Blvd N	71st St n	44th St N	4084	15 5033 6/2/2016	104173	168	3666	C	"	"	"	"	8	
625	Southern Oak ES	Paral/Perp	4/24/2018	SR688/Ulmerton Rd	101st St SE	Wild Acres Rd	4032	15 3032 6/28/2016	056251	1627	2505	C	7	510	132	0	0	no sdwlks,Starkey N of 122nd Ave, Ulmerton 4032 veh
433	Starkey ES	Unfunded	4/24/2018	SR694/Park Blvd N	Marathon Dr	79th St N	AADT 51500	15 5731 2016		1728			4	625	466	59		
433	Starkey ES	Paral.	4/24/2018	Starkey Rd	Largo Lakes Blvd	94th Ave N	AADT 30000	15 9195 2016	074332	1794	3009	C					31	Ditches - Impaired walkpath - 45mph
470	Walsingham ES	Paral/Perp	4/24/2018	SR688/Ulmerton Rd	10th St SE	Coral Way	4032	15 3032 6/28/16	114701	180	3667	C	7	436	111	0	5	no sdwlks,Starkey N of 122nd Ave, Ulmerton 4032 veh
014	Largo MS	Unfunded	4/24/2018	Donegan Rd	North of Donegan	Lake Ave SE	AADT 5400	15 9112 2016		139			10	852	283	5		heavy traffic, ditches, must walk in road at drain pipe
225 & 226	Mad Beach Fund	NA	4/24/2018										0	1361	140	0		
128	Morgan Fitz	NA	4/24/2018										21	1101	255	0		US 19 flyover
304	Osceola MS	NA	4/24/2018										17	1284	283	0		
341	Pinellas Park MS	NA	4/24/2018										17	1243	564	0		
208	Largo HS	NA	4/24/2018										20	1840	587	0		
303	Osceola HS	NA	4/24/2018										15	1779	122	0		
342	Pinellas Park HS	NA	4/24/2018										27	2038	404	0		US19 flyover
709 & 282	Pinellas Sec	NA	4/24/2018										9	234	11	0		
<b>NORTH COUNTY</b>																		
037	Belleair ES	Unfunded	4/24/2018	Court St	Memorial Cswy	S Keystone Dr	2857	15 5175 5/16/2016		1323			5	552	540	179		
313	Curtis Fund	NA	4/24/2018										0	412	99	0		
107	Dunedin ES		4/24/2018										3	514	464	0		
113	Eisenhower ES	Perp.	4/24/2018	McMullen Booth Rd	Gulf to Bay Blvd	Oak Ridge Rd	4748	MPOstn1029 5/17/16	111131	184	3650	A	4	619	511	0	0	
113	Eisenhower ES	Unfunded	4/24/2018	US Hwy 19 N	Ham Blvd	South Dr		US19service rd	051132	1595	2465	D	"	"	"	144		fly over on Drew & SR60



### Hazardous Walk Review PCS/Interagency

Sch #	School Name	Haz Type	Committee Review Date	Hazard Street	Hazard From	Hazard To	Traffic Count (Per/Hr)	FDOT Station	Hazard Code #	Edulog Boundary ID	State Record ID	Gov. Entity	# bus	Student Count	<2 miles	Unfunded	funded	Comments
113	Eisenhower ES	Unfunded	4/24/2018	SR60/Gulf to Bay Blvd	US Hwy 19	Damasquis Rd	3523	15 0074 6/2/2016	051133	1597	2463	C	"	"	"	25		Unfunded 2017 - car counts
134	Frontier ES	Perp.	4/24/2018	Roosevelt Blvd	US 19 N	Bay Vista Dr	3994	15 0007 5/23/16	071343	1869	3253	D	5	571	454		131	Re-designated to Roosevelt Blvd from US 19 - 2017 Review
134	Frontier ES	Perp.	4/24/2018	SR686/East Bay Dr	Keene Rd	US Hwy 19 N	4842	15 5304 5/24/16	081341	1645	3251	A	"	"	"		20	
134	Frontier ES	Unfunded	4/24/2018	US 19	SR686/Roosevelt Blvd	SR688/Ulmerton Rd		US19flyover	091342	84			"	"	"	10		US19 flyover, south of Roosevelt
148	Garrison Jones ES	Perp.	4/24/2018	US Hwy 19 N	Winding Creek Blvd	Evans Rd	7283	15 0044 3/16/16	101481	152	3557	D	4	607	336	0	0	
181	High Point ES	Unfunded	4/24/2018	SR686/Roosevelt Blvd	49th St N	140th Ave N	AADT42500	15 0035 2016		92			3	560	516	0		unfunded, peak AADT 51000 in 2008
181	High Point ES	Perp.	4/24/2018	SR686/Roosevelt Blvd	49th St N	Sawmill Ave	4842-3994	15 5304 5/24/16 15 0007 5/23/16		1642	NA		"	"	"	0	8	Declare 2017 - Car counts
181	High Point ES	Unfunded	4/24/2018	SR688/Ulmerton Rd	49th St N	Rogers Ave	3596	15 0105 6/7/2016		97	NA		"	"	"	2		pedestrian tunnel
181	High Point ES	Unfunded	4/24/2018	US Hwy 19 N	Ulmerton Rd	East Bay Dr		US19flyover		183	3656	D	"	"	"	0		fly over on East Bay/Roosevelt & 142nd Ave
636	Kings Highway	NA	4/24/2018										3	355	219	0		
099	Leila Davis ES	Unfunded	4/24/2018	US Hwy 19 N	Main St	Republic Dr			050991	1651	2487	D	4	748	547	86		pedestrian bridge over US 19 at enterpirse rd & Fly over at SR580
099	Leila Davis ES	Perp.	4/24/2018	McMullen Booth Rd	Los Prados Dr	Mil Ray Dr	4270	MPOstn1029 12/19/17	41917	256	2488	A	"	"	"		127	east side McMullen Booth
230	McMullen Booth ES	Unfunded	4/24/2018	US Hwy 19 N	CW 1st St	Stag Run Blvd			052302	1680	2493	D		627		64		UNFUNDED underpass at Sunset Pt and US 19 N.
230	McMullen Booth ES	Perp.	4/24/2018	McMullen Booth Rd	SR 580	Thomas Rd	4270	MPOstn1029 12/19/17	112303	170	3658	A		"	"		5	
292	Oakhurst ES	NA	4/24/2018										3	621	453	0		
343	Plumb ES													653	566			
351	Ridgecrest ES	NA	4/24/2018										15	692	328	0		
373	Safety Harbor ES	Perp.	4/24/2018	McMullen Booth Rd	Booth Blvd	Kapok Terr.	4270	MPOstn1029 12/19/17	93731	79		A	6	636	412	0	0	
385	San Jose ES	Unfunded	4/24/2018	SR580/Skinner Blvd	Victoria Dr	Keene Rd	1452	15 5070 6/2/16		246			3	320	207	61		Per Dr Grego due to intersection geometry
387	Sandy Lanes ES	NA	4/24/2018										4	341	325	0		
412	Skycrest ES	NA	4/24/2018										1	621	608	0		
073	Clearwater Fund MS	NA	4/24/2018										0	805	144	0		
334	Clearwater Intermediate	NA	4/24/2018										10	274	58	0		

### Hazardous Walk Review PCS/Interagency

Sch #	School Name	Haz Type	Committee Review Date	Hazard Street	Hazard From	Hazard To	Traffic Count (Per/Hr)	FDOT Station	Hazard Code #	Edulog Boundary ID	State Record ID	Gov. Entity	# bus	Student Count	<2 miles	Unfunded	funded	Comments
109	Dunedin MS	NA	4/24/2018										15	1065	469	0		
286	Oak Grove MS	Unfunded	4/24/2018	east of US 19						485			17	1151	485	28		east side split, Ham Blvd forced right at US 19
286	Oak Grove MS	Unfunded	4/24/2018	north of Gulf to Bay Blvd						248			"	"	"	142		
374	Safety Harbor MS	NA	4/24/2018										19	1202	222	0		Need to look at adjustment to 2 mi that was done by Doug awhile ago. MAP
108	Dunedin HS	NA	4/24/2018										19	1477	382	0		
044	Brooker Creek ES	Unfunded	4/24/2018	East Lake Rd	Arbor Oaks Dr	Crescent Oaks Blvd	3173	MPOstn1006 5/9/17	050441	18	2453	A	5	562	257	136		
044	Brooker Creek ES	Paral.	4/24/2018	Keystone Rd	north side	East of Buffalo Run	1412	MPOstnMP03 4/11/17	050442	1442	2454	A	"	"	"		3	Ditches - 45mph-NS east of Buffalo Run
244	Chi Chi Rodriguez Acsd.	Perp.	4/24/2018	McMullen Booth Rd	Oakhaven Dr	Lake Cypress Dr	4075	MPOstn SC09 3/8/17	082441	1745	3268	A	5	58	1	0	0	
85	Curlew Creek ES	Perp.	4/24/2018	US Hwy 19 N	Frontier Trl	297th Ave N	5993	15 0045 2/17/16	050853	1586	2461	D	7	642	343	0	2	
085	Curlew Creek ES	Perp.	4/24/2018	McMullen Booth Rd	SR 580	Boot Ranch Blvd S	4075	MPOstnSC09 3/8/17	050854	1720	2457	A	"	"	"		56	
626	Cypress Woods ES	Perp.	4/24/2018	East Lake Rd	Kensington Trace	Sandy Point Rd	4469	MPOstnMP17 10/3/17	056261	1583	2462	A	8	719	351	0	154	
133	Forest Lakes ES	Perp.	4/24/2018	Tampa Rd	E Lk Club Dr	Race Track Rd	5364	15 0063 3/15/16	111331	171	3652	A	5	476	210	0	16	
178	Highland Lakes ES	Perp.	4/24/2018	US Hwy 19 N	Beacon Grove Blvd	Alderman Rd	6309	15 5503 2/22/16	130001	155	3658	D	4	495	312	0	0	
178	Highland Lakes ES	Perp.	4/24/2018	US Hwy 19 N	Pine Ridge Way S	Nebraska Ave	6309	15 5503 2/22/16	101782	154	3559	D	"	"	"		0	
178	Highland Lakes ES	Perp.	4/24/2018	US Hwy 19 N	West Lake Rd	Tampa Rd	6309	15 5503 2/22/16	130002	153	3790	D	"	"	"		0	
628	Lake St George ES	Perp.	4/24/2018	US Hwy 19 N	Highlands Blvd	Boy Scout Rd	5993	15 0045 2/17/16	056281	1631	2480	D	3	637	557	0	151	
296	Oldsmar ES	Perp.	4/24/2018	Tampa Rd	Sunflower Dr	Race Track Rd	5364	15 0063 3/15/16	112961	176	3659	A	3	525	310	0	6	
307	Ozona ES	Unfunded	4/24/2018	SR595/Alt 19 N	Wexford Leas Blvd	Trade Winds Dr				1653			2	754	607	1		sidewalks installed 2017
438	Sunset Hills ES	NA	4/24/2018										1	459	318	0		
627	Sutherland ES	Perp.	4/24/2018	US Hwy 19 N	Klosterman Rd	Coral Landings Blvd	5664	15 5503 2/23/16	106272	158	3563	D		587	510	0		
449	Tarpon ES	Unfunded	4/24/2018	US Hwy 19 N	Sawgrass Dr	Sun Valley Blvd				1622			5	578	498	39		

### Hazardous Walk Review PCS/Interagency

Sch #	School Name	Haz Type	Committee Review Date	Hazard Street	Hazard From	Hazard To	Traffic Count (Per/Hr)	FDOT Station	Hazard Code #	Edulog Boundary ID	State Record ID	Gov. Entity	# bus	Student Count	<2 miles	Unfunded	funded	Comments
449	Tarpon ES	Paral.	4/24/2018	SR595/Alt 19 N	TS Plaza Dr	Dodecanese Blvd	1242	15 3002 2/9/2016	054491	1619	2541	C	"	"	"		40	imparied walk-deep ditches 45 mph
	Tarpon ES	Unfunded	4/24/2018	N of Anclote River	W of US 19	E of Dixie Hwy							"	"	"	120		per Robin Wikle & Ward Kennedy
053	Carwise MS	NA	4/24/2018										20	1132	157	1		Need unfunded hazard on W side of US 19. MAP
639	East Lake MS		4/24/2018										9	394	141	0		
319	PalmHarbor MS	Unfunded	4/24/2018	US19						1850			15	1323	557	50		
458	Tarpon Srprings MS	NA	4/24/2018										16	837	178	0		
075	Countryside HS	NA	4/24/2018										25	2019	353	0		
108	Dunedin HS	NA	4/24/2018										19	1477	382	0		
618	East Lake HS	NA	4/24/2018										31	2198	318	0		
468	Palm Harbor Univ HS	NA	4/24/2018										21	2532	833	0		
452	Tarpon Springs HS	NA	4/24/2018										19	1440	393	0		
	<b>TOTAL</b>														<b>38434</b>	<b>2018</b>	<b>851</b>	
Red																		
Yellow	Unfunded																	
Green	Declared/Funded																	
Blue	NO HAZARD - Just review																	

PCS 2018 Hazardous Walk Review

	A	B	C	D	E	F	G	H	I	J	K	L
1	School Name	Haz Type	Hazard Street	Hazard From	Hazard To	Stn/date	Traffic Count (Per/Hr)	Funded Bussing	Comments	Reviewed By	Date	2018 Position Statement
2	Anona ES	Paral.	Indian Rocks RD	Wilcox Rd	Honeysuckle Rd	15 9208 2016	AA DT 14500	27	Deep Ditches - Impaired walkpath - 35mph	Joan M. Rice	5/1/18	No design plans ; under review
3	Bardmoor ES	Paral.	Starkey Rd	Largo Lakes Blvd	94th Ave N	15 9195 2016	AA DT 30000	0	Ditches - Impaired walkpath - 45mph	Joan M. Rice	5/1/18	Under review
4	Belcher ES	Perp.	SR686/East Bay Dr	US Hwy 19	Plumosa Dr	15 5304 5/24/2016	4842	2	south side of East Bay	Wally Reh	6/4/18	See attachment
5	Fuguitt ES	Perp.	SR688/Ulmerton Rd	Coral Way	113th St	15 3032 6/28/2016	4032	2	north side of Ulmerton O O Z	Wally Reh	6/4/18	See Attachment
6	Pinellas Park ES	Perp.	US Hwy 19 N	66th Ave N	49th St N	15 5029 2/16/16	5419	54	Park Blvd fuesover US19N	Wally Reh	6/4/18	See Attachment
7	Skyview ES	Perp.	US Hwy 19 N	106th Ave N	Manlands Blvd	15 5029 2/16/16	5419	0	East side of US19N	Wally Reh	6/4/18	See attachment
8	Skyview ES	Perp.	US Hwy 19 N	Gateway Blvd	82nd Ave	15 5029 2/16/16	5419	0	East side of US19N	Wally Reh	6/4/18	See attachment
9	Skyview ES	Perp.	SR694/Park Blvd N	71st St n	44th St N	15 5033 6/2/16	4084	8	South side of Park Blvd	Wally Reh	6/4/18	See attachment
10	Southern Oak ES	Perp.	SR688/Ulmerton Rd	101st St SE	Wild Acres Rd	15 3032 6/28/2016	4032	27	NS of Ulmerton, ditches on Starkey	Wally Reh	6/4/18	See attachment
11	Starkey ES	Paral.	Starkey Rd	Largo Lakes Blvd	94th Ave N	15 9195 2016	AA DT 30000	31	Ditches, impaired walk path	Joan M. Rice	5/1/18	Under review
12	Walsingham ES	Perp.	SR688/Ulmerton Rd	10th St SE	Coral Way	15 3032 6/28/2016	4032	5	NS of Ulmerton, ditches on Starkey	Wally Reh	6/4/18	See attachment
13	Eisenhower ES	Perp.	McMullen Booth Rd	Gulf to Bay Blvd	Oak Ridge Rd	MPO 1029 5/17/16	4748	0	East side of McMullen Booth O O Z	Joan M. Rice	5/1/18	Ream Wilson Pedestrian Bridge north of Drew
14	Frontier ES	Perp.	SR686/Roosevelt Blvd	US 19 N	Bay Vista Dr	15 0007 5/23/16	3994	131	NS of Roosevelt, east of US 19	Wally Reh	6/4/18	See attachment
15	Frontier ES	Perp.	SR686/East Bay Dr	Keene Rd	US Hwy 19 N	15 5304 5/24/16	4842	20	NS of East Bay, west of US 19	Wally Reh	6/4/18	See attachment
16	Garrison Jones ES	Perp.	US Hwy 19 N	Winding Creek Blvd	Evans Rd	15 0044 3/16/16	7283	0	ES of US 19 by Republic Dr O O Z	Wally Reh	6/4/18	See attachment
17	High Point ES	Perp.	SR686/Roosevelt Blvd	49th St N	Sawmill Ave	15 5304 5/24/16 15 0007 5/23/16	4842-3994	8	NS of Roosevelt, east of US 19 O O Z	Wally Reh	6/4/18	See attachment
18	Leila Davis ES	Perp.	McMullen Booth Rd	SR 580	Mil Ray Dr	MPO 1029 12/19/17	4270	127	ES of McMullen Booth	Joan M. Rice	5/1/18	No plans at this time
19	McMullen Booth ES	Perp.	McMullen Booth Rd	SR 580	Thomas Rd	MPO 1029 12/19/17	4270	5	ES of McMullen Booth O O Z	Joan M. Rice	5/1/18	No plans at this time
20	Safety Harbor ES	Perp.	McMullen Booth Rd	Booth Blvd	Kapok Terr.	MPO 1029 12/19/17	4270	0	WS of McMullen Booth O O Z	Joan M. Rice	5/1/18	No plans at this time

PCS 2018 Hazardous Walk Review

	A	B	C	D	E	F	G	H	I	J	K	L
	School Name	Haz Type	Hazard Street	Hazard From	Hazard To	Stn/date	Traffic Count (Per/Hr)	Funded Bussing	Comments	Reviewed By	Date	2018 Position Statement
21												
22	Brooker Creek ES	Paral.	Keystone Rd	north side only on Keystone Rd	East of Buffalo Run	MPO MP03 4/11/17	1412	3	no sidewalks, deep ditches, 45mph	Joan M. Rie	5/1/18	No plans at this time
23	Chi Chi Rodriguez	Perp.	McMullen Booth Rd	Oakhaven Dr	Lake Cypress Dr	MPO SC09 3/8/17	4075	0	ES of McMullen Booth	Joan M. Rie	5/1/18	No plans at this time
24	Curlew Creek ES	Perp.	US Hwy 19 N	Frontier Trl	297th Ave N	15 0045 2/17/16	5993	2	WS of US 19 at Curlew Rd	Wally Peh	6/4/18	See attachment
25	Curlew Creek ES	Perp.	McMullen Booth Rd	SR 580	Boot Ranch Blvd S	MPO SC09 3/8/17	4075	56	ES of McMullen Booth Rd	Joan M. Rie	5/1/18	No plans at this time
26	Cypress Woods ES	Perp.	East Lake Rd	Kensington Trace	Sandy Point Rd	MPO MP17 10/3/17	4469	154	WS of East Lake Rd	Joan M. Rie	5/1/18	No plans at this time
27	Forest Lakes ES	Perp.	SR584/Tampa Rd	E Lk Club Dr	Race Track Rd	15 0063 3/15/16	5364	16	SS of Tampa Rd Ooz	Wally Peh	6/4/18	See attachment
28	Highland Lakes ES	Perp.	US Hwy 19 N	Beacon Grove Blvd	Alderman Rd	15 5503 2/22/16	6309	0	WS of US 19 Ooz commercial area	Wally Peh	6/4/18	See attachment
29	Highland Lakes ES	Perp.	US Hwy 19 N	Pine Ridge Way S	Nebraska Ave	15 5503 2/22/16	6309	0	WS of US 19 Ooz at Highlands Blvd	Wally Peh	6/4/18	See attachment
30	Highland Lakes ES	Perp.	US Hwy 19 N	West Lake Rd	Tampa Rd	15 5503 2/22/16	6309	0	WS of US 19 commercial area	Wally Peh	6/4/18	See attachment
31	Lake St George ES	Perp.	US Hwy 19 N	Highlands Blvd	Boy Scout Rd	15 0045 2/17/16	5993	151	WS of US 19	Wally Peh	6/4/18	See attachment
32	Oldsmar ES	Perp.	SR584/Tampa Rd	Sunflower Dr	Race Track Rd	15 0063 3/15/16	5364	6	NS of Tampa Rd Ooz	Wally Peh	6/4/18	See attachment
33	Sutherland ES	Perp.	US Hwy 19 N	Klosterman Rd	Coral Landings Blvd	15 5503 2/22/16	6309	12	ES of US 19	Wally Peh	6/4/18	See attachment
34	Tarpon ES	Paral.	SR595/Alt 19 N	TS Plaza Dr	Dodecanese Blvd	15 3002 2/9/16	1242	43	Alt 19, ditches, impaired walkpath, N of Anclote R	Wally Peh	6/4/18	See attachment
35								890				

No.	School Name	On Street	From	To	Section No.	MMP	EMP	Work Program		Work Mix	Status	2018-2023					COMMENT			
								Item No.	Description			PE	ROW	ENV	RAIL/UTILITIES	CST				
4	Belcher ES	SR686 / East Bay Dr	Plumosa Dr	US Hwy 19	15030000	1,774	3,532	No Work Program Identified								NO COMING WP PROJECT				
5	Fugitt ES	SR688 / Ulmerton Rd	113th St	Coral Way	15120000	4,035	6,821	438702-1	ARTERIAL MANAGEMENT PROGRAM (AMP)	ATMS - ARTERIAL TRAFFIC MGMT	PRE-CONST UNDERWAY	18-23				ONGOING ATMS PROJECT				
6	Pinellas Central ES	US Hwy 19 N	Gateway Centre Blvd	Ulmerton Rd	15150000	10,112	13,638	438702-1	ARTERIAL MANAGEMENT PROGRAM (AMP)	ATMS - ARTERIAL TRAFFIC MGMT	PRE-CONST UNDERWAY	18-23				PRELIMINARY ENGINEERING IN 18/19				
								439770-1	US 19/SR 55 FROM 49TH ST TO SR 580	PRELIMINARY ENGINEERING	PRE-CONST UNDERWAY	18								
								435914-2	US 19/SR 55 FROM 66TH AVE N TO 118TH AVE N	INTERCHANGE IMPROVEMENT	PRE-CONST UNDERWAY	19			23					
								436055-1	US 19/SR 55 FROM S OF 49TH ST TO N OF 49TH ST	LANDSCAPING	WORK IN PROGRESS			Unknown						
7	Pinellas Park ES	US Hwy 19 N	66th Ave N	49th St N	15150000	8,641	11,079	438702-1	ARTERIAL MANAGEMENT PROGRAM (AMP)	ATMS - ARTERIAL TRAFFIC MGMT	PRE-CONST UNDERWAY	18-23				PRELIMINARY ENGINEERING IN 18/19				
								435914-2	US 19/SR 55 FROM 66TH AVE N TO 118TH AVE N	INTERCHANGE IMPROVEMENT	PRE-CONST UNDERWAY	19								
								436055-1	US 19/SR 55 FROM S OF 49TH ST TO N OF 49TH ST	LANDSCAPING	WORK IN PROGRESS			Unknown						
								437626-1	US 19/SR55/34TH ST N FROM N OF 44TH AVE N TO N OF PARK BLVD	RESURFACING	PRE-CONST UNDERWAY	18-19			21					
8	Skyview ES	US Hwy 19 N	Mainlands Blvd	106th Ave N	15150000	10,469	11,593	438702-1	ARTERIAL MANAGEMENT PROGRAM (AMP)	ATMS - ARTERIAL TRAFFIC MGMT	PRE-CONST UNDERWAY	18-23				PRELIMINARY ENGINEERING IN 18/19				
								439770-1	US 19/SR 55 FROM 49TH ST TO SR 580	PRELIMINARY ENGINEERING	PRE-CONST UNDERWAY	18								
								436055-1	US 19/SR 55 FROM S OF 49TH ST TO N OF 49TH ST	LANDSCAPING	WORK IN PROGRESS			Unknown						
9	Skyview ES	US Hwy 19 N	82nd Ave	Gateway Centr Blvd	15150000	9,790	10,112	438702-1	ARTERIAL MANAGEMENT PROGRAM (AMP)	ATMS - ARTERIAL TRAFFIC MGMT	PRE-CONST UNDERWAY	18-23				PRELIMINARY ENGINEERING IN 18/19				
								435914-2	US 19/SR 55 FROM 66TH AVE N TO 118TH AVE N	INTERCHANGE IMPROVEMENT	PRE-CONST UNDERWAY	19								
10	Skyview ES	SR694 / Park Blvd W	71st St N	44th St N	15510000	0,571	3,196	No Work Program Identified							NO COMING WP PROJECT					
11	Southern Oak ES	SR688 / Ulmerton Rd	101st St SE / Sunrise Drive	Wild Acres Rd	15120000	5,044	6,576	438702-1	ARTERIAL MANAGEMENT PROGRAM (AMP)	ATMS - ARTERIAL TRAFFIC MGMT	PRE-CONST UNDERWAY	18-23				ONGOING ATMS PROJECT				
13	Wallingham ES	SR688 / Ulmerton Rd	10th St SE	Coral Way	15120000	5,160	6,821	438702-1	ARTERIAL MANAGEMENT PROGRAM (AMP)	ATMS - ARTERIAL TRAFFIC MGMT	PRE-CONST UNDERWAY	18-23				ONGOING ATMS PROJECT				
15	Frontier ES	SR686 / Roosevelt Blvd	US 19 N	Bay Vista Dr	15030000	3,547	4,732	No Work Program Identified							NO COMING WP PROJECT					
16	Frontier ES	SR686 / East Bay Dr	Keene Rd / Starkey Rd	US Hwy 19 N	15030000	1,553	3,545	No Work Program Identified							NO COMING WP PROJECT					
17	Frontier ES	US Hwy 19 N	SR688 / Ulmerton Rd	SR687 / Roosevelt Blvd	15150000	13,630	15,282	439770-1	US 19/SR 55 FROM 49TH ST TO SR 580	PRELIMINARY ENGINEERING	PRE-CONST UNDERWAY	18				PRELIMINARY ENGINEERING IN 18				
								438702-1	ARTERIAL MANAGEMENT PROGRAM (AMP)	ATMS - ARTERIAL TRAFFIC MGMT	PRE-CONST UNDERWAY	18-23								
18	Garrison Jones ES	US Hwy 19 N	Winding Creek Blvd	Evans Rd	15150000	22,811	23,448	438702-1	ARTERIAL MANAGEMENT PROGRAM (AMP)	ATMS - ARTERIAL TRAFFIC MGMT	PRE-CONST UNDERWAY	18-23				PRELIMINARY ENGINEERING IN 18, CST IN 21				
								256774-2	US 19 (SR 55) FROM N OF SR 580 (MAIN ST) TO NORTHSIDE DR	ADD LANES & RECONSTRUCT	PRE-CONST UNDERWAY	18-23			18-19		19	21	21-22	
19	High Point ES	SR686 / East Bay Dr	Sawmill Ave	49th St N	15030000	3,518	5,462	No Work Program Identified							NO COMING WP PROJECT					
								438702-1	ARTERIAL MANAGEMENT PROGRAM (AMP)	ATMS - ARTERIAL TRAFFIC MGMT	PRE-CONST UNDERWAY	18-23								
26	Curtlew Creek ES	US Hwy 19 N	297th Ave N	Frontier Tr	15150000	24,167	24,749	256774-3	US 19 (SR 55) FROM NORTHSIDE DR TO NORTH OF CR 95	ADD LANES & RECONSTRUCT	PRE-CONST UNDERWAY	18			21	21-22	PRELIMINARY ENGINEERING IN 18, CST IN 21			
								15009000	4,818	5,332	No Work Program Identified									
29	Tampa Rd	SR 584 / Tampa Rd	E. Lake Dr	Races Track Rd	15050000	13,068	13,588	No Work Program Identified							PRELIMINARY ENGINEERING IN 18, CST IN 20					
								15080000	0,000	2,454	437626-1	SR 584/SR 580/TAMPA RD FROM TAMPA RD/CURLEW TO ST PETERSBURG DR	RESURFACING	PRE-CONST UNDERWAY		18		19	18	20
30	Highland Lakes ES	US Hwy 19 N	Beacon Groves Blvd	Alhambra Rd	15150000	27,363	27,666	438702-1	ARTERIAL MANAGEMENT PROGRAM (AMP)	ATMS - ARTERIAL TRAFFIC MGMT	PRE-CONST UNDERWAY	18-23				PRELIMINARY ENGINEERING IN 18				
								433797-1	US 19 (SR 55) FROM N OF NEBRASKA AVE TO S OF TIMBERLANE RD	ADD LANES & RECONSTRUCT	PRE-CONST UNDERWAY	18-23		22	19					
								438702-1	ARTERIAL MANAGEMENT PROGRAM (AMP)	ATMS - ARTERIAL TRAFFIC MGMT	PRE-CONST UNDERWAY	18-23								
31	Highland Lakes ES	US Hwy 19 N	Nebraska Ave	Pine Ridge Way S	15150000	26,649	26,941	433799-1	US 19 (SR 55) FROM N OF CR 95 TO S OF PINE RIDGE WAY S	INTERCHANGE (NEW)	PRE-CONST UNDERWAY	18-21	21	19		PRELIMINARY ENGINEERING IN 18				
								433797-1	US 19 (SR 55) FROM N OF NEBRASKA AVE TO S OF TIMBERLANE RD	ADD LANES & RECONSTRUCT	PRE-CONST UNDERWAY	18	22	19						
								438702-1	ARTERIAL MANAGEMENT PROGRAM (AMP)	ATMS - ARTERIAL TRAFFIC MGMT	PRE-CONST UNDERWAY	18-23								
32	Highland Lakes ES	US Hwy 19 N	Tampa Road	West Lake Road	15150000	25,841	26,516	433799-1	US 19 (SR 55) FROM N OF CR 95 TO S OF PINE RIDGE WAY S	INTERCHANGE (NEW)	PRE-CONST UNDERWAY	18-21	21	19		PRELIMINARY ENGINEERING IN 18				
								438702-1	ARTERIAL MANAGEMENT PROGRAM (AMP)	ATMS - ARTERIAL TRAFFIC MGMT	PRE-CONST UNDERWAY	18-23								
								433799-1	US 19 (SR 55) FROM N OF CR 95 TO S OF PINE RIDGE WAY S	INTERCHANGE (NEW)	PRE-CONST UNDERWAY	18-21	21	19						
33	Lake St George ES	US Hwy 19 N	Boy Scout Rd	Highlands Blvd	15150000	23,550	26,875	438702-1	ARTERIAL MANAGEMENT PROGRAM (AMP)	ATMS - ARTERIAL TRAFFIC MGMT	PRE-CONST UNDERWAY	18-23				PRELIMINARY ENGINEERING IN 18-21, CST IN 21				
								433799-1	US 19 (SR 55) FROM N OF CR 95 TO S OF PINE RIDGE WAY S	INTERCHANGE (NEW)	PRE-CONST UNDERWAY	18-21	21	19						
								256774-2	US 19 (SR 55) FROM N OF SR 580 (MAIN ST) TO NORTHSIDE DR	ADD LANES & RECONSTRUCT	PRE-CONST UNDERWAY	18	18-19	19	21		21-22			
34	Tampa Rd	SR 584 / Tampa Rd	Sunflower Dr	Races Track Rd	15050000	13,067	13,588	No Work Program Identified							RESURFACING IN 20					
								15080000	0,312	2,454	437626-1	SR 584/SR 580/TAMPA RD FROM TAMPA RD/CURLEW TO ST PETERSBURG DR	RESURFACING	PRE-CONST UNDERWAY		18		19	18	20
								438702-1	ARTERIAL MANAGEMENT PROGRAM (AMP)	ATMS - ARTERIAL TRAFFIC MGMT	PRE-CONST UNDERWAY	18-23								
35	Sutherland ES	US Hwy 19 N	Coral Landings Blvd	Klosterman Rd	15150000	26,231	29,685	433799-1	US 19 (SR 55) FROM N OF CR 95 TO S OF PINE RIDGE WAY S	INTERCHANGE (NEW)	PRE-CONST UNDERWAY	18-21	21	19		PRELIMINARY ENGINEERING IN 18				
								433797-1	US 19 (SR 55) FROM N OF NEBRASKA AVE TO S OF TIMBERLANE RD	ADD LANES & RECONSTRUCT	PRE-CONST UNDERWAY	18	22	19						
								433796-1	US 19 (SR 55) FROM S OF TIMBERLANE RD TO S OF LAKE ST	ADD LANES & RECONSTRUCT	PRE-CONST UNDERWAY	18	23							
								434890-1	ALT US 19 NORTH FROM SR 60 TO PASCO COUNTY LINE	ATMS - ARTERIAL TRAFFIC MGMT	PRE-CONST UNDERWAY				18					
36	Tarpon ES	SR595 / Alt 19 N	Dodecanese Blvd	Oakmont Ave	15020000	13,207	13,834	435909-1	ALT US 19/SR 595 FROM BELLAIR TO PASCO CO LINE	PRELIMINARY ENGINEERING	ADOPTED, NOT BEGUN	21-23			PRELIMINARY ENGINEERING IN 18-23					
								435909-2	ALT US 19/SR595 CORRIDOR STUDY I FM BELLAIR RD TO PINELLAS/PASCO CO/L	PD&E/EMO STUDY	PRE-CONST UNDERWAY	18								

\*\*\*Key  
  
 \_Cahngt See Name on Print Out\_

Please Sign In for Attendance

	Print Name	Agency	Email	Signature
1	MISE BURKE	PCS - TRANSPORTATION	lurkem@psc.org	M. J. Burke
2	DIANA SCHMIDT	City of St. Pete	diana.schmidt@stpete.org	Diana Schmidt
3	COE MOSE	Pinellas	cmose@pinellas.gov	Coe Mose
4	Joan Rice	Pinellas Co.	jrice@pinellascounty.org	JMR
5	Sandra Knobel	PC/MPO FORWARD PINELLAS	s.knobel@forwardpinellas.org	Sandra Knobel
6	Russ Schmeider	City of St. Petersburg	rschmeider@citystpete.com	Russ Schmeider
7	William Rika	FDOT	William.Rika@dot.state.fl.us	William Rika
8	Ginger Regalot	FDOT	gingerregalot@dot.state.fl.us	Ginger Regalot
9	Carrie Keescker	PCSO	ckeeseckera@psosnet.com	C. Keescker
10	Jim Goodley	PCSO	jgoodley@psosnet.com	Jim Goodley
11				
12				
13				
14				
15				
16				
17				
18				
19				
20				
21				

**Please Sign In for Attendance**

	Print Name	Agency	Email	Signature
1	MIKE OSURKI	PCS-TRANSPORTATION	Lunken@psb.org	M.J. Osurki
2	RAY BAKER	SAFETY HARBOR	RBAKER@CITYOFSAFETYHARBOR.FL.GOV	Ray Baker
3	Stephanie Carrier	PCS-Transportation	Carriers@psb.org	Stephanie Carrier
4	Dominick Giordano	PCS-TRANSPORTATION	GIORDANODO@PCSB	Dominick Giordano
5	Lawrence Kallala	PPPD	LKALLALA@PINELLAS-FL.COM	Lawrence Kallala
6	Joan Rice	Pinellas Co.	jrice@pinellascounty.org	Joan M. Rice
7	Carrie Keeseler	PCSO	ckeesecker@psos.com	C. Keeseler
8	Norman W. Runkles	CPD	NORMAN.W.RUNKLES@MYCLEARWATER.COM	Norman W. Runkles
9	Bill Riha	FDST	William.Riha@dot.state.fl.us	Bill Riha
10	Tim Jacobson	CITY OF Oldsmar	Tjacobson@myoldsmar.com	Tim Jacobson
11	Sandra Kneebel	Forward Pinellas	SKneebel@ForwardPinellas.org	Sandra Kneebel
12	Hattie Agardo	Dunedin	hagardo@dunedinfl.net	Hattie Agardo
13	MICHAEL ROOUE	TS PD	MROOUE@TSPD.US	Michael Rooue
14	Derek ...	TS	Derek ...	Derek ...
15	Ann Marie ...	Large ...	ammarie@large.com	Ann Marie ...
16				
17				
18				
19				
20				
21				



	A	B	C	D	E	F	G	H	I	J	K	
1	<b>STEPS Minutes</b>											
2	(Schools Transportation & Enhanced Pedestrian Safety)											
3	<b>June 20, 2018</b>											
4												
5	I.	<b><u>CALL TO ORDER/INTRODUCTIONS</u></b>										
6		Casey Morse called the meeting order.										
7												
8												
9		<b>ATTENDEES:</b>										
10		<b>Pinellas County Schools</b>					<b>Largo Police Department</b>					
11		***, Assoc. Super., Facilities, Operations					*** - Crossing Guard Coordinator					
12		***, Route & Safety Auditor, Transportation Department ***					***, Police Sergeant					
13		Facilities, Operations, Safety & Security Manager					<b>City of Largo - *****</b>					
14		***, Facilities, Operations, Safety & Security Manager					<b>Pinellas County- Public Works</b> Joan Rice, Engineer					
15		***, Facilities, Operations, Safety & Security Manager ***					Casey Morse, Pinellas County Traffic Engineering					
16		Facilities, Operations, Safety & Security Manager					<b>Pinellas Park PD- *****</b>					
17		Loren Johnson, Facilities, Operations, School Safety & Security					<b>City of Pinellas Park</b>					
18		Stephanie Carrier, Pinellas County Schools Transportation					<b>Pinellas County PW,</b> Johnathon Kuntz, <b>Pinellas County Safety,</b>					
19		***, Pinellas County Schools Health Education					Joe Camera, Dominic Giordano					
20		Marshall Touchton, Demographic Specialist, Student Assignment					<b>Pinellas County Sheriff's Office</b>					
21		*** <b>City of Safety Harbor</b> *** <b>City of Clearwater</b>					Carrie Keesecker, School Crossing Guards Supervisor					
22		Norman Runkles, Clearwater PD, ***Crossing Guard Program					***, Lieutenant, Youth Education					
23		Katie Agoado, <b>City of Dunedin</b>					<b>STSC</b> Sandra Knoebel					
24		<b>City of Oldsmar Public Works</b>					<b>St. Petersburg PD</b>					
25		Tim Jacobson					Diana Schmidt, School Crossing Guard Supervisor <b>City</b>					
26		<b>City of St. Petersburg Beach, James Ryan, City of Safety</b>					<b>of St. Petersburg</b> <b>Safety</b>					
27		<b>Harbor, Sandra Knoebel, P.C. PPC/MPO</b>					<b>Harbor Public Works, ***</b>					
28		<b>Business Community Partner-</b>					<b>Tarpon Springs PD.- *****</b>					
29		Paula Davis, PCS Transportation, Joe Camera, PCS Transportation					<b>Pinellas County All Children's Hospital SRTS -</b>					
30		<b>Cardno -*****</b>					***, All Children's Hospital					
31		<b>Council PTA-*****</b>					<b>FDOT - ***, MDA</b>					
32							***- <b>FDOT/CTSTC</b>					
33							<b>GFY Traffic Consultant - *****</b> <b>Tindale</b>					
34												
35	II.	<b><u>APPROVAL OF MINUTES</u></b>										
36												
37	III.	<b>SITE SPECIFIC</b>										
38		<b>Countryside HS</b> - Water line replacement will have no impact on school, <b>scheduled for summer</b>										
39		<b>Gulfport ES</b> - 4 ft. Fencing installed on the westside of PCS area. Should be completed end of July.										
40		<b>Oakhurst ES</b> - Construction in progress. One year project.										
41		<b>Orange Grove ES</b> - Walkway restriped on PCS property not on city roadway.										
42		<b>Palm Harbor U HS</b> -Added short speed zone for student crossing. Need crosswalk at north end of school.										
43		<b>Pinellas Park MS</b> - Parent loop will stay the same. "No Parking" signs will be put up.										
44		Further observation during 3rd and 4th week of August.										
45		<b>Ponce de Leon ES</b> - In progress/flooding issues at Ponce De Leon and Jefferson.										
46		<b>Tarpon Springs HS</b> - PC will also review FL Ave. if within jurisdiction-In progress.Pool is off the table.										
47		Observations of bus and parent loop.										
48		<b>Oakhurst ES</b> - Construction will affect school, safe passage needed for students										
49												
50	IV.	<b><u>NEW GENERAL BUSINESS</u></b>										
51		a. New General Topics as introduced by committee:										
52		b. Crash History Review:As of 6.13.18 = 40 fatalities/last year 46. DWSR and seatbelt issues.										
53		c. New student assignment update - May 11th, ran district application program period (3 rounds through July).										
54		d. Nominating new STEP Chair in July's meeting										
55		e. Flashing lights at Brooker Creek were accidentally left on. Operated through Control Center.										
56		f. Bell times on website from April. Grades released from Tallahassee, won't know about extra half hour until grades are released.										
57	V.	<b><u>COMMITTEE BUSINESS/UPDATES</u></b>										
58												

	A	B	C	D	E	F	G	H	I	J	K
54	a. Student Assignment Updates (Marshall Touchton)										
55											
56	VI.	<b><u>OLD GENERAL BUSINESS</u></b>									
57	a. Walking School Bus - nothing to report										
58											
59	VII.	<b><u>NEXT MEETING</u></b>									
60	Wednesday July 18, 2018 *9:00 am Royal Palm Room WPSC - 11111 S Belcher Rd., Largo										
61											
62	cc:										
63	Committee Members										
64											
65	BAC:	MPO Bicycle Advisory Committee (Attn: Sarah Ward)									
66	CTST:	Community Traffic Safety Team (Marc Hanger)									
67	PTAC:	MPO Pedestrian Transportation Advisory Committee (attn: Sarah Ward)									
68	STSC:	MPO School Transportation Safety Committee (Attn: Gina Harvey)									
69	Florida Suncoast Safe Kids Coalition (Attn: Jean Shoemaker)										

VII. Site Specific

Site	Discussion	Action Items	STEPS School District Contact	STEPS Agency Contact for
Countryside HS	Water Line Replacement - Will be closing Southbound McMullen and Westbound 580. Work scheduled for summer.	No impact on school, in progress	Terry Huberty Mike Burke	Pinellas County
Jamerson ES	Left turn concerns	Repairs not since May. Stephanie will observe.	Terry Huberty	Casey Morse, PC
Gulfport ES	22nd Ave S Drainage Improvements (between 51st St. S. and 55th St. S.)	4 ft. Fencing installed. Should finish end of July.	Stephanie Carrier	Casey Morse
Oakhurst ES	Construction on Antillies / 102nd - There will be some closures	Construction in progress. One year project.	Mike Burke Jerry Reynolds	Casey Morse
Orange Grove ES	No additional signage for street parking is necessary. No parking impact on neighbors, school submitted request for stop bars and walkway. Work order is in for PCS driveway striping.	Walkway restriped on city property not on roadway. Jeremy Huckelby is no longer here. Job is posted.	Stephanie Carrier	City of Seminole
Palm Harbor University	Cross walk issue - 19 / Delaware lights to go up to trigger cross walk spring of 2018. Solar added to RRFBs. Improvements will start in February, end in April	Complete maybe early June. Added short speed zone from from crossing are to driveway only. Students can now cross the street. RFB's are bagged and ready. Should be done end of June.	Terry Huberty	FDOT
Pinellas Park MS	Site plan issues, improved signage, do not block bus entrance. Follow-up - crossing guard locations. Adding a new parent loop on the back of school off 68th. Rerouting students to 68th Ave and 68th St while they demolish the Administration Bldgs.	Parent loop will stay the same. "No Parking" signs will be put up. Further observation (Stephanie) will be 3rd or 4th week in August. Sidewalks will be put up at 70th Ave and 68th St. Gates open are an issue. Guards are directing students on the grass for safety. Guards are taking verbal	Jim Dzija Stephanie Carrier	Casey Morse
Ponce De Leon ES	Heavy rain and drainage on Ponce De Leon Blvd. Crown in the intersection is causing the drainage. Follow - up	Lee Harris is working with Public works to shave down the pavement in the intersection. (In progress) Need to do roadwork get floods out of Ponce De Leon and Jefferson	Tom McGinty Mike Burke	Largo PD/Lee Harris / PC
Tarpon Springs HS	PC received a call about the school zone signage in front of Tarpon Springs HS & Sunset Hills ES. Need to forward plans to the county on the rebuild of school	PC is going to turn the two school zones into one. Will also review Florida Ave. if within jurisdiction. Observe bus and parent loops in August, signage up and in progress. Reduce parking at admin. Bus circle half torn up - principal was not there.	Mike Burke Terry Huberty	Casey Morse
RRFB	Rectangular Rapid Flashing Beacon			
TTSS	Travel -To - School - Safety			
FDOT	Florida Department of Transportation			
SRTS	Safe Routes to School			

# **STEPS Agenda for July 18, 2018**

**School Transportation & Enhanced Pedestrian Safety Committee**

**Agenda for (June 20, 2018, from 9:00a.m. – 11:30a.m**

**Walter Pownall Service Center (WPSC) Royal Palm Room**

**11111 S. Belcher Road, Largo, FL 33773**

**WPSC is located at the northeast corner of Bryan Dairy & Belcher Road  
(Visitor parking/entrance located on the south side of the building)**

**I. 9:00 INTRODUCTIONS**

**II. APPROVAL OF June 20, 2018 MEETING SUMMARY**

**III. SITE-SPECIFIC BUSINESS**

- a. Please print out and bring a copy of the June 20, 2018 STEPS site specific summary
- b. New site-specific topics as introduced by committee

**IV. NEW GENERAL BUSINESS**

- a. New general topics as introduced by committee
- b. 2018-2019 meeting dates

**V. COMMITTEE BUSINESS/UPDATES**

- a. Student Assignment Updates (Marshall Touchton )

**VI. OLD GENERAL BUSINESS**

- a. Walking School Bus

**VII. NEXT MEETING**

August 15, 2018 \*9:00 “Royal Palm Room”

# **STEPS Minutes**

(Schools Transportation & Enhanced Pedestrian Safety)

**July 18, 2018**

## **I. CALL TO ORDER/INTRODUCTIONS**

Mike Burke called the meeting order at 9:00a.m..

### **ATTENDEES:**

Mike Burke, Route & Safety Auditor, Transportation Department Loren Johnson, Facilities, Operations, School Safety & Security Stephanie Carrier, Pinellas County Schools Transportation Norman Runkles, Crossing Guard Program <b>Joan Rice, Engineer</b> <b>Casey Morse, Pinellas County Traffic Engineering</b> STSC Sandra Knoebel , St. Petersburg PD Carrie Keesecker, School Crossing Guards Supervisor Diana Schmidt, School Crossing Guard Supervisor Mashid Arasteh, MDA Rachel Webb, All Children's Hospital Roger Johnson, City of Clearwater Tim Jacobson, City of Oldsmar James Ryan, City of Safety Harbor Ginger Regalado, FDOT/CTSTC Joni Goodley, PCSO Marshall Touchton, PCS-Student Assignment/arial photographer Paula Davis, PCS Transportation
---

## **II. APPROVAL OF MINUTES**

## **III. SITE SPECIFIC**

Countryside HS - Water line replacement has minimal impact on school, will cross our driveway

East Lake HS - PC will install RRFBs over the summer.

Gulfport ES - 4 ft. Fencing installed on the westside of PCS area. Stephanie visited the site.

Jamerson ES - Left turn concerns, cone change, left turn is needed. Adding signage near bus exit/entrance

Orange Grove ES - Check with city about restriping roadway. Stephanie will visit site.

Palm Harbor MS - Pinellas County is reviewing school zone and signage

Palm Harbor U HS - Work order has been placed and the work has started. Meeting 04.18.18 to discuss (update coming). Omaha between Alderman/Delaware (South of Sutton Place). Speed zone only at crosswalk Will happen over summer

Pinellas Park MS - Construction crew parking on 70th. Jim will check to see ifthey can park in lot behind Admin. No Parking signs will not be put up.

Ponce de Leon ES - In progress/no update

Tarpon Springs HS - PC will also review FL Ave. if within jurisdiction. In progress

Oakhurst ES - Construction will affect school, safe passage needed for students

San Jose ES - 580 & New York Crossing, Mike observation and will talk with Principal/AP

Pinellas Technical HS Seminole

## **IV. NEW GENERAL BUSINESS**

a. New General Topics as introduced by committee:

b. Crash History Review: April 4 = 30 fatalities

c. Hazardous Walk Review: Started April 17th with South County and Seminole Schools. Second meeting will cover the rest of the schools.

d. Tampa Road - work being done on median to flex posts is finished. Forward bike flyer.

e. Drew Street -All Children's Hospital requested a letter of reference. Approved by the STRP Committee

V. **COMMITTEE BUSINESS/UPDATES**

a. Student Assignment -Midtown added (Gifted/Enriched)

VI. **OLD GENERAL BUSINESS**

a. Walking School Bus - nothing to report

VII. **NEXT MEETING**

Wednesday August 15, 2018 \*9:00 am Royal Palm Room WPSC - 11111 S Belcher Rd., Largo

cc:

Committee Members

BAC: MPO Bicycle Advisory Committee (Attn: Sarah Ward)

CTST: Community Traffic Safety Team (/ Marc Hanger)

PTAC: MPO Pedestrian Transportation Advisory Committee (attn: Sarah Ward)

STSC: MPO School Transportation Safety Committee (Attn: Gina Harvey)

Florida Suncoast Safe Kids Coalition (Attn: Jean Shoemaker)

## VII. Site Specific

<b>Site</b>	<b>Discussion</b>	<b>Action Items</b>	<b>STEPS School District Contact</b>	<b>STEPS Agency Contact for</b>
<b>Countryside HS</b>	Water Line Replacement - Will be closing Southbound McMullen and Westbound 580. Work scheduled for summer.	Minimal impact on school, May not be completed before school starts.	Terry Huberty Mike Burke	Pinellas County
<b>East Lake HS - Bryan Ln</b>	Follow up on RRFBs - No longer under litigation	Flashers are up	Terry Huberty	Casey Morse, PC
<b>Gulfport ES</b>	22nd Ave S Drainage Improvements (between 51st St. S. and 55th St. S.)	4 ft. Fencing installed on the westside of PCS area. Stephanie will visit the site in progress. This would be on city property	Stephanie Carrier	Casey Morse
<b>Jamerson ES</b>	Left turn concerns	Stephanie was there for the site visit.	Mike Burke Stephanie Carrier	
<b>Oakhurst ES</b>	Construction on Antillies / 102nd - There will be some closures	Construction will affect the school, The company is assigning a flagman	Mike Burke Jerry Reynolds	
<b>Orange Grove ES</b>	No additional signage for street parking is necessary. No parking impact on neighbors, school submitted request for stop bars and walkway. Work order is in for PCS driveway striping.	Check with city about restriping roadway. Stephanie will visit site.	Stephanie Carrier	City of Seminole
<b>Palm Harbor MS</b>	Confusing school zones on 19th Street: PC doing an inventory of signs.	Pinellas County is reviewing school zone and signage	Terry Huberty	Casey Morse
<b>Palm Harbor University</b>	Cross walk issue - 19 / Delaware lights to go up to trigger cross walk spring of 2018. Solar added to RRFBs. Improvements will start in February, end in April	July 2018 - FDOT work in progress. Lighting is up and looks wonderful. Street lights will come on when crossing light is pushed. Over the summer they will change the speed zone.	Terry Huberty	FDOT
<b>Pinellas Park MS</b>	Site plan issues, improved signage, do not block bus entrance. Follow-up - crossing guard locations. Adding a new parent loop on the back of school off 68th. Rerouted students to 68th Ave and 68th St while they demolish the Administration Bldgs.	68St bus loop is smaller; 3-4 buses not 7. Signage will go up after school starts to observe where they are needed.	Jim Dzija Stephanie Carrier	Casey Morse
<b>Ponce De Leon ES</b>	Heavy rain and drainage on Ponce De Leon Blvd. Crown in the intersection is causing the drainage. Follow - up	Lee Harris is working with Largo Public works to shave down the pavement in the intersection. (In progress)	Tom McGinty Mike Burke	Largo PD/Lee Harris / PC
<b>San Jose ES</b>	580 & New York crossing	Carrie will identify students and possibly offer busing. Observation by Mike	Mike Burke Stephanie Carrier	Carrie Keesecker
<b>Tarpon Springs HS</b>	PC received a call about the school zone signage in front of Tarpon Springs HS & Sunset Hills ES	Buses enter on Florida and exit on Gulf. Extra officers will be on duty. Parents drop off at Admin Bldg. Juniors will go to Florida Ave's 2 parking lots. One year for completion.	Mike Burke Terry Huberty	Casey Morse
<b>TTSS</b>	Travel -To - School - Safety			
<b>FDOT</b>	Florida Department of Transportation			
<b>SRTS</b>	Safe Routes to School			
<b>RRFB</b>	Rectangular Rapid Flashing Beacon			

# **STEPS Agenda for August 15, 2018**

**School Transportation & Enhanced Pedestrian Safety Committee**

**Agenda for (August 15, 2018, from 9:00a.m. – 11:30a.m**

**Walter Pownall Service Center (WPSC) Royal Palm Room**

**11111 S. Belcher Road, Largo, FL 33773**

**WPSC is located at the northeast corner of Bryan Dairy & Belcher Road  
(Visitor parking/entrance located on the south side of the building)**

**I. 9:00 INTRODUCTIONS**

**II. APPROVAL OF July 18, 2018 MEETING SUMMARY**

**III. SITE-SPECIFIC BUSINESS**

- a. Please print out and bring a copy of the July 18, 2018 STEPS site specific summary
- b. New site-specific topics as introduced by committee

**IV. NEW GENERAL BUSINESS**

- a. New general topics as introduced by committee

**V. COMMITTEE BUSINESS/UPDATES**

- a. Student Assignment Updates (Marshall Touchton )

**VI. OLD GENERAL BUSINESS**

- a. Walking School Bus

**VII. NEXT MEETING**

September 19, 2018 \*9:00 “Royal Palm Room”



# **STEPS Minutes**

(Schools Transportation & Enhanced Pedestrian Safety)

**August 15, 2018**

## **I. CALL TO ORDER/INTRODUCTIONS**

Casey Morse called the meeting order at 9:05a.m..

Attendees introduced themselves

### **ATTENDEES:**

Mike Burke, Route & Safety Auditor, Transportation Department Loren Johnson, Facilities, Operations, School Safety & Security Stephanie Carrier, Pinellas County Schools Transportation Norman Runkles, Crossing Guard Program <b>Joan Rice, Pinellas County Traffic Engineer</b> <b>Casey Morse, Pinellas County Traffic Engineering</b> STSC Sandra Knoebel, St. Petersburg PD Carrie Keesecker, School Crossing Guards Supervisor Diana Schmidt, School Crossing Guard Supervisor Mashid Arasteh, MDA Rachel Webb, All Children's Hospital Dennis Russo, Administrator Safety & Security Tim Jacobson, City of Oldsmar Terry Huberty, General Manager Area I Mahshid Arasteh, P.E., FDOT Safety & Security Anthony Boone, Tarpon Springs PD Marshall Touchton, PCS-Student Assignment/aerial photographer Paula Davis, PCS Transportation Jerry Reynolds, General Manager Area III
---

## **II. APPROVAL OF MINUTES**

July Minutes were approved

## **III. SITE SPECIFIC**

Clearwater HS – Drainage and work on Hercules

**Countryside HS** – Roads only closed in evening, no impact on school.

**Gulfport ES** – Construction nearby. City of Gulfport's property.

**Jamerson ES** Left turn concerns

**Oakhurst ES – 102<sup>nd</sup> Ave & Antilles**

**Orange Grove ES** – Restriped but needs thermal plastic completed. Stephanie will visit site.

**Palm Harbor MS** – Completed, remove from summary

**Palm Harbor U HS** – Crosswalk at Delaware is useable. Flashers at Florida is an issue.

**Pinellas Technical HS** – Add to summary – bells, buses, signage

**Clearwater HS** – Add to summary - Drainage

**Pinellas Park MS** – Site visit scheduled for August 29, 2018. An ongoing project.

**Ponce de Leon** – Completed, take off summary

**Tarpon Springs HS** - PC will also review FL Ave. if within jurisdiction. A Boone will research.

**Paul B Stephens** – City Manager requests

**San Jose ES** – Completed, take off summary

### **NEW GENERAL BUSINESS**

IV. a. New General Topics as introduced by committee:

b. Crash History Review: 52 as of date: 14 pedestrians, 4-bikes, 16-motorcycles, 18-vehicles. Lowest since 2013.

c. Hazardous Walk Review: Second meeting will cover rest of schools

V. **COMMITTEE BUSINESS/UPDATES**

- a. Student Assignment -Midtown added (Gifted/Enriched Cultural Arts Program) application.

VI **OLD GENERAL BUSINESS**

- a. Walking School Bus – Nina Harris donated 10 new bikes
- b. Volunteers will be on hand through September 14, 2018
- c. Gary Phillips will be back to work in September.

**NEXT MEETING**

- VII. Wednesday, September 19, 2018 \*9:00 am Royal Palm Room WPSC - 11111 S Belcher Rd., Largo

cc: Committee Members

BAC:

CTST:

MPO Bicycle Advisory Committee (Attn: Sarah Ward)

PTAC:

Community Traffic Safety Team (Attn: Dave Fechner)

Marc Hanger)

STSC:

MPO Pedestrian Transportation Advisory Committee (Attn: Sarah Ward)

Florida Suncoast Safe Kids Coalition (Attn: Jean Shoemaker)

MPO School Transportation Safety Committee (Attn: Gina Harvey)

# **STEPS Agenda for September 19, 2018**

**School Transportation & Enhanced Pedestrian Safety Committee**

**Agenda for (September 19, 2018, from 9:00a.m. – 11: 30a.m**

**Walter Pownall Service Center (WPSC) Royal Palm Room**

**11111 S. Belcher Road, Largo, FL 33773**

**WPSC is located at the northeast corner of Bryan Dairy & Belcher Road  
(Visitor parking/entrance located on the south side of the building)**

## **I. INTRODUCTIONS**

## **II. APPROVAL OF August 15, 2018 MEETING SUMMARY**

- a. Please bring a copy if you have questions

## **III. SITE-SPECIFIC BUSINESS**

- a. Please print out and bring a copy of the August's 2018 STEPS site specific summary
- b. New site-specific topics as introduced by committee

## **IV. NEW GENERAL BUSINESS**

- a. Campbell Park – bus & car circle (or to the site list)
- b. New FDOT Standards – speed zoning differs from the MUTCD (Manual on Uniform Traffic Control Devices).
- c. Suggestions how this meeting needs to operate/focus
- d. Bay News 9 Chuck Herman

## **V. COMMITTEE BUSINESS/UPDATES**

- a. Student Assignment Updates (Marshall Touchton)
- b. Update contact information

## **VI. OLD GENERAL BUSINESS**

- a. Walking School Bus

## **VII. NEXT MEETING**

October 17, 2018 \*9:00 “Royal Palm Room”

# STEPS COMMITTEE MEETING SCHEDULE

## 2018-2019 SCHOOL YEAR

**Royal Palm Room 9:00a.m. – 11:30a.m.**

DAY	DATE	BEGINNING TIME	ENDING TIME	ROOM
Wednesday	July 19, 2017	9:00 a.m.	11:30 a.m.	Royal Palm
Wednesday	August 16, 2017	9:00 a.m.	11:30 a.m.	Royal Palm
Wednesday	September 20, 2017	9:00 a.m.	11:30 a.m.	Royal Palm
Wednesday	October 18, 2017	9:00 a.m.	11:30 a.m.	Royal Palm
Wednesday	November 14, 2017	9:00 a.m.	11:30 a.m.	Royal Palm
Wednesday	December 20, 2017	9:00 a.m.	11:30 a.m.	Royal Palm
Wednesday	January 17, 2018	9:00 a.m.	11:30 a.m.	Royal Palm
Wednesday	February 21, 2018	9:00 a.m.	11:30 a.m.	Royal Palm
Wednesday	March 21, 2018	9:00 a.m.	11:30 a.m.	Royal Palm
Wednesday	April 18, 2018	9:00 a.m.	11:30 a.m.	Royal Palm
Wednesday	May 16, 2018	9:00 a.m.	11:30 a.m.	Royal Palm
Wednesday	June 20, 2018	9:00 a.m.	11:30 a.m.	Royal Palm
Wednesday	July 18, 2018	9:00 a.m.	11:30 a.m.	Royal Palm
Wednesday	August 15, 2018	9:00 a.m.	11:30 a.m.	Royal Palm

Meetings are held at:

Pinellas County Schools  
Walter Pownall Service Center  
11111 S. Belcher Road  
Largo, FL 33773

## STEPS Contact

Updated 9/24/2018

AGENCY	LAST NAME	FIRST NAME	DEPARTMENT	TITLE	ADDRESS1	ADDRESS2	CITY	ZIP	PHONE	FAX	EMAIL
Belleair Bluffs	Sullivan	Debra	City of Belleair Bluffs	Public Works Director	2747 Sunset Blvd.		Belleair Bluffs	33770	581-6808/ 584-2151	584-6175	<a href="mailto:dsullivan@belleairbluffs-fl.gov">dsullivan@belleairbluffs-fl.gov</a>
Cardno	Ponder	Wayne	Traffic Operations	Planner	380 Park Place Blvd. Suite 300		Clearwater	33759	727-531-3505		<a href="mailto:wayne.ponder@cardno.com">wayne.ponder@cardno.com</a>
City of St. Pete Beach	Serfustini	Mecca	City of St. Pete. Beach	Administrative Assistant	155 Corey Avenue	7581 Boca Ciega Dr.	St. Pete Beach	33706	727-363-9243	727-363-2736	<a href="mailto:mserfustini@stpetebeach.org">mserfustini@stpetebeach.org</a>
Clearwater	Bertels	Paul	Traffic Operations Division	Manager	City of Clearwater	100 S. Myrtle Ave.	Clearwater	33756	562-4794	562-4052 or 562-4755	<a href="mailto:Paul.Bertels@myclearwater.com">Paul.Bertels@myclearwater.com</a>
Clearwater	Mellis	Ted	Traffic Operations	Supervisor II	City of Clearwater	1650-E North Arcturas Ave.	Clearwater	33756	727-562-4952 ext7252	Cell-727-224-7822	<a href="mailto:ted.mellis@myclearwater.com">ted.mellis@myclearwater.com</a>
Clearwater Police	Runkles	Norman W.	Police Department	Crossing Guard Coordinator	City of Clearwater	646 Pierce Street	Clearwater	33757	224-7192		<a href="mailto:Norman.Runkles@myclearwater.com">Norman.Runkles@myclearwater.com</a>
Clearwater	Leonard	Felicia	Public Works	Ped/Bike Coordinator	City of Clearwater	P O Box 4748	Clearwater	33758	562-4852	562-4825	<a href="mailto:Roger.Johnson@myclearwater.com">Roger.Johnson@myclearwater.com</a>
Clearwater	Johnson	Roger	Traffic Operations	P.E.; Traffic Engineer	City of Clearwater	P.O. Box 4748	Clearwater	33758	562-4560	562-4755	<a href="mailto:Daniel.Simpson@myclearwater.com">Daniel.Simpson@myclearwater.com</a>
Dunedin	i		Section Engineer	Transportation & Traffic Engineer	PO Box 1348	737 Loudon Avenue	Dunedin	34697			=B12
Dunedin	Agoado	Kathleen	Project Engineer	Transportation & Traffic Engineer	PO Box 1348	737 Loudon Avenue	Dunedin	34697-1348	727-298-3186	727-298-3171	<a href="mailto:Agoado@dunedin.fl.net">Agoado@dunedin.fl.net</a>
FDOT	Regalado	Ginger	Florida Depart. Of Transportation District Seven	CTST Coordinator	FDOT	11201 N McKinley Drive	Tampa	33612	813-975-6256		<a href="mailto:Rhonda.grice@dot.state.fl.us">Rhonda.grice@dot.state.fl.us</a>
FDOT			Pinellas County CTST	Transportation Analyst	Pinellas County MPO	310 Court Street	Clearwater	33756	464-5649		<a href="mailto:@pinellascounty.org">@pinellascounty.org</a>
FDOT	Dunn	Kevin L.	District Seven Traffic Operations	Traffic Services Manager		11201 N. McKinley Dr. MS7-1300	Tampa	33612	813-975-6631		<a href="mailto:Kevin.dunn@dot.state.fl.us">Kevin.dunn@dot.state.fl.us</a>
FDOT	Arasteh	Mahshid	American Quality Consultants, LLC	Principal	685 Main st Suite D		Safety Harbor	34695	727-543-1458	727-799-2275	<a href="mailto:americanqualityconsultants@gmail.com">americanqualityconsultants@gmail.com</a>
FDOT	Hall	Mark	Transportation	District Regulations Engineer	FDOT	11201 N. McKinley Dr. MS7-1300	Tampa	33612	(813) 975-6247	(813) 975-6278	<a href="mailto:mark.hall@dot.state.fl.us">mark.hall@dot.state.fl.us</a>
FDOT	Weaver	Matthew	Florida Depart. Of Transportation	District Safety Program Engineer	FDOT	11201 N. McKinley Dr., MS 7-1300	Tampa	33612	(813) 975-6254		<a href="mailto:Matthew.weaver@dot.state.fl.us">Matthew.weaver@dot.state.fl.us</a>
FDOT	Boda	Susan (Temporary)	Traffic Operations	CTST Program Manager	FDOT	11201 N. McKinley Dr., MS 7-1300	Tampa	33612	(813) 975-6256	(813) 975-6278	<a href="mailto:Sboda@tindaleoliver.com">Sboda@tindaleoliver.com</a>
George F. Young, Inc.	Gotwald	Jon	Engineering, St. Petersburg	P.E., Vice President Business Community Partner	George F. Young, Inc.	299 Dr. Martin Luther King Jr. St. N.	St. Petersburg	33701	822-4317 X 221 or 643-1856 cell	822-2919	<a href="mailto:Gotwald@georgeyoung.com">Gotwald@georgeyoung.com</a>

AGENCY	LAST NAME	FIRST NAME	DEPARTMENT	TITLE	ADDRESS1	ADDRESS2	CITY	ZIP	PHONE	FAX	EMAIL
George F. Young, Inc.	Dabkowski	Jerry	Governmental Services	Traffic Engineer	George F. Young, Inc.	299 Dr. Martin Luther King Jr. St. N.	St. Petersburg	33701	424-7427 cell#352--256-2603	822-2919	<a href="mailto:jdabkowski@georgeyoung.com">jdabkowski@georgeyoung.com</a>
Gulfport	Farrand	Mary	Police Department	Lieutenant/Operation Commander	Gulfport Police Department	2401 53rd Street South	Gulfport	33707	893-1055	893-1100	<a href="mailto:mfarrand@mygulfport.us">mfarrand@mygulfport.us</a>
Gulfport	Hayes	Cynthia	Police Department	Police Services Supervisor	Gulfport Police Department	2401 53rd Street South	Gulfport	33707	893-1050	552-1351	<a href="mailto:chayes@mygulfport.us">chayes@mygulfport.us</a>
Kenneth City	Matson	Ken	Police Department	Interim Police Chief	City of Kenneth City	4600 58th Street North	Kenneth City	33709	498-8942	541-4597	<a href="mailto:matsonk@kennethcityfl.org">matsonk@kennethcityfl.org</a>
Kenneth City	Daniels	Kevin	Police Department	Officer	Kenneth City Police Dept.	4601 58th Street North	Kenneth City	33709	498-8941	498-8946	<a href="mailto:ofcdaniels@kennethcityfl.org">ofcdaniels@kennethcityfl.org</a>
Largo	Connell	Kipper	Police Department	Crossing Guard Coordinator	Largo Police Department	201 Highland Ave.	Largo	33770	587-6739		<a href="mailto:kconnell@largo.com">kconnell@largo.com</a>
Largo	Sequeira	Haley	Police Department	SGT.	Largo Police Department	201 Highland Ave.	Largo	33770	586-7472		<a href="mailto:hsequeir@largo.com">hsequeir@largo.com</a>
Largo	Cieslak	Rafal	City of Largo-Community Development	Engineer III	City of Largo	200 Highland Ave.	Largo	33779	727.587.6713 x-4421		<a href="mailto:rcieslak@largo.com">rcieslak@largo.com</a>
Madeira Beach	Crawford	Shane B.	City Manager of Madeira Beach	City Manager of Madeira Beach	City of Madeira Beach	300 Municipal Drive	Madeira Beach	33708	391-9951 x227	397-7420	<a href="mailto:scrawford@madeirabeachfl.gov">scrawford@madeirabeachfl.gov</a>
Oldsmar	Jacobson	Timothy	Public Works	Senior Engineering Technician Technical Services Division	City of Oldsmar	100 State Street W.	Oldsmar	34677	(813) 749-1138 Cell (813) 433-8074	(813) 855-4803	<a href="mailto:tjacobson@myoldsmar.com">tjacobson@myoldsmar.com</a>
Oldsmar			Public Works	Administrator	City of Oldsmar	101 State Street W.	Oldsmar	34677			
PCSB	Dzija	Jim	Facilities, Operations, Safety & Security	Area 4, Manager	Walter Pownall Service Center	11111 S. Belcher Rd.	Largo	33773	638-2735 cell	547-7234	<a href="mailto:Abbottd@pcsb.org">Abbottd@pcsb.org</a>
PCSB	Herbic	Clint	Operational Services	Associate Superintendent	Walter Pownall Service Center	11111 S. Belcher Rd.	Largo	33773	547-7167	547-7147	<a href="mailto:Herbicc@pcsb.org">Herbicc@pcsb.org</a>
PCSB	Piehl	Jill	Operational Services	Secretary Associate Superintendent	Walter Pownall Service Center	11112 S. Belcher Rd.	Largo	33774	547-7167 or ext 4541	547-7148	<a href="mailto:PIEHLJ@pcsb.org">PIEHLJ@pcsb.org</a>
PCSB	Corbett	William	Administration	Deputy Superintendent	Administration Building	301 4th Street SW	Largo	33770			<a href="mailto:Corbettw@pcsb.org">Corbettw@pcsb.org</a>
PCSB	Magilligan	Wendy	Administration	Secretary to the Deputy Superintendent	Administration Building	301 4th Street SW	Largo	33770	588-6022		<a href="mailto:Magilliganw@pcsb.org">Magilliganw@pcsb.org</a>
PCSB	Weeks	Cammie	Transportation	Route Safety Auditor N. of Ulmerton	WPSC	11111 S. Belcher Rd.	Largo	33773	547-7100 x 4670		<a href="mailto:Weeksc@pcsb.org">Weeksc@pcsb.org</a>
PCSB	Carrier	Stephanie	Transportation	Safety Team	WPSC	11111 S Belcher Rd.	Largo	33773	547-7100 x 4627		<a href="mailto:Carriers@pcsb.org">Carriers@pcsb.org</a>

AGENCY	LAST NAME	FIRST NAME	DEPARTMENT	TITLE	ADDRESS1	ADDRESS2	CITY	ZIP	PHONE	FAX	EMAIL
PCSB	Russo	Dan	Facilities Operations	Coordinator, Energy Management, Safety and Security	WPSC	11111 S Belcher Rd.	Largo	33773	547-7205 cell 202-815-3797		<a href="mailto:Russojo@pcsb.org">Russojo@pcsb.org</a>
PCSB			PCS Police Department	Sergeant	WPSC	11111 S. Belcher Rd.	Largo	33773	547-7222		<a href="mailto:@pcsb.org">@pcsb.org</a>
PCSB	Huberty	Terry	Facilities, Operations, Safety & Security	Area 1, General Manager of Operations	WPSC	11111 S Belcher Rd.	Largo	33773	547-7288 or 224-8495 cell	547-7234	<a href="mailto:hubertyt@pcsb.org">hubertyt@pcsb.org</a>
PCSB	McBride	Rick	Transportation Department	Director	WPSC	11111 S Belcher Rd.	Largo	33773	547-4598 or 547-7294	547-7244	<a href="mailto:mcbrideja@pcsb.org">mcbrideja@pcsb.org</a>
PCSB	McGinty	Tom	Facilities, Operations, Safety & Security	Area 2, Manager	WPSC	11111 S Belcher Rd.	Largo	33773	547-7289 or 638-3230 cell	547-7234	<a href="mailto:mcgintyt@pcsb.org">mcgintyt@pcsb.org</a>
PCSB	Reynolds	Jerry	Facilities, Operations, Safety & Security	Area 3, Manager	WPSC	11112 S Belcher Rd.	Largo	33773	638-2792	547-7234	<a href="mailto:reynoldsje@pcsb.org">reynoldsje@pcsb.org</a>
PCSB	Salters	Felicia	Transportation Department	Area Manager	WPSC	11111 S. Belcher Rd.	Largo	33773	547-7231	547-7232	<a href="mailto:saltersf@pcsb.org">saltersf@pcsb.org</a>
PCSB	Johnson	Loren	Facilities, Operations, Safety & Security	Secretary II / Clerk Specialist II	WPSC	11111 S. Belcher Rd.	Largo	33773	547-7238	547-7238	<a href="mailto:johnsonlo@pcsb.org">johnsonlo@pcsb.org</a>
PCSB	Williams	Luke	Pinellas County Schools Police	Chief	WPSC	11111 S. Belcher Rd	Largo	33773	547-7221	547-7221	<a href="mailto:Williamsl@pcsb.org">Williamsl@pcsb.org</a>
PCSB	Touchton	Marshall	Student Assignment	Demographic Specialist	Administration Building	301 4th Street SW	Largo	33770	588-5190	588-5171	<a href="mailto:touchtonm@pcsb.org">touchtonm@pcsb.org</a>
Pinellas County	Glaser	Daniel	Transportation Engineering	Senior Engineer	Pinellas County	14 S Ft. Harrison Ave,	Clearwater	33756	464-5209 main 464-0500		<a href="mailto:dglaser@pinellascounty.org">dglaser@pinellascounty.org</a>
Pinellas County	Washburn	Thomas	Public Works Traffic Engineering	Traffic Engineer	Pinellas County	22211 U.S 19/ Bldg.1, 33765	Clearwater	33765	464-8804	464-8803	<a href="mailto:twashburn@pinellascounty.org">twashburn@pinellascounty.org</a>
Pinellas County Health Dept.	Carmichael	Megan	Communities Putting Prevention to Work	Policy Analyst Manager		205 MLK St.N.	St.Petersburg FI	33701	824-6900 ext11319	242-0343 Black-Berry	<a href="mailto:Megan_Carmichael@doh.state.fl.us">Megan_Carmichael@doh.state.fl.us</a>
Pinellas County Sheriff's Office	Goodley	Joni	Youth Education Section	Lieutenant	PCSO Youth Education Section	10750 Ulmerton Rd.	Largo	33778	582-6911	464-8803	<a href="mailto:jgoodley@pcsonet.com">jgoodley@pcsonet.com</a>
Pinellas County Sheriff's Office	Keesecker	Carrie	School Crossing Guard Program	School Crossing Guard Supervisor	PCSO	10750 Ulmerton Rd.	Largo	33778	582-5641	582-5610	<a href="mailto:ckeesecker@pcsonet.com">ckeesecker@pcsonet.com</a>
Pinellas County	Harvey	Gina A.	Public Works Traffic Engineering	Program Coordinator		22211 U.S. Hwy 19 North, Bldg1,	Clearwater	33765	464-5651	464-8908	<a href="mailto:gharvey@pinellascounty.org">gharvey@pinellascounty.org</a>
Pinellas County	Morse	Casey	Public Works Traffic Engineering	Engineering Service Tech II		22211 U.S. Hwy 19 North, Bldg1,	Clearwater	33765	464-5651	464-8908	<a href="mailto:Cmorse@pinellascounty.org">Cmorse@pinellascounty.org</a>

AGENCY	LAST NAME	FIRST NAME	DEPARTMENT	TITLE	ADDRESS1	ADDRESS2	CITY	ZIP	PHONE	FAX	EMAIL
Pinellas County	Rice	Joan	Public Works Transportation	Multi-Modal Safety/ Project Coordinator	22211 US Hwy 19 N, Bldg 1		Clearwater	33765	464-8610	464-8908	<a href="mailto:rice@pinellascounty.org">rice@pinellascounty.org</a>
Forward Pinellas, MPO Division	Chatman	Rodney	Forward Pinellas, MPO	Principal Planner	310 Court Street, 2nd FL,		Clearwater	33756	464-8214		<a href="mailto:rschatman@forwardpinellas.org">rschatman@forwardpinellas.org</a>
Forward Pinellas, MPO Division	Knoebel	Sandra L	Forward Pinellas, MPO	Planner	310 Court Street, 2nd FL,		Clearwater	33756	464-5653		<a href="mailto:sknoebel@forwardpinellas.org">sknoebel@forwardpinellas.org</a>
Pinellas Cty All Child's Hospital Safe	Sabiel	Tiffany	Pinellas County All Children's Hospital	Regional Supervisor	501 Sixth Ave S Department 9610		St. Petersburg	33701	727-767-4124	727-767-7331	<a href="mailto:tiffany.sabiel@jhmi.edu">tiffany.sabiel@jhmi.edu</a>
Pinellas Cty All Child's Hospital Safe RTS	Webb	Rachelle	Pinellas County All Children's Hospital	Community Instructor, Safe Routes to School	501 Sixth Ave S Department 9610		St. Petersburg	33701	727-767-4937	727-767-7331	<a href="mailto:Rachelle.Webb@jhmi.edu">Rachelle.Webb@jhmi.edu</a>
Pinellas Cty All Child's Hospital Safe RTS	Vybiralova	Petra	Pinellas County All Children's Hospital	Safe Kids Supervisor	502 Sixth Ave S				727-767-7331		<a href="mailto:pyvira1@jhmi.edu">pyvira1@jhmi.edu</a>
Pinellas Cty Council PTA VP of Education			Pinellas County Council of PTA's	VP of Education	13639 Pinecrest Dr.		Largo	33774	698-6979		
Pinellas Park	Chase	Dave	Public Works Service Facility	Transportation and Stormwater	6101 78th Ave.N		Pinellas Park	33781	541-00805 ext.5704	541-0807	<a href="mailto:dchase@pinellas-park.com">dchase@pinellas-park.com</a>
Pinellas Park	Turner	M	Pinellas Park PD	Sergeant/Crossing Guard Duty	Pinellas Park Police Dept.	P O Box 1102	Pinellas Park	33780	541-0758 ext 4518		<a href="mailto:mturner@pinellas-park.com">mturner@pinellas-park.com</a>
Pinellas Park	Galley	Scott	Pinellas Park PD	Sergeant/Crossing Guard Duty	Pinellas Park Police Dept.	P O Box 1103	Pinellas Park	33781	727.369.7864		<a href="mailto:Sgalley@pinellas-park.com">Sgalley@pinellas-park.com</a>
Pinellas Park	Dimaculangan	Benson	Pinellas Park PD	Youth Services Detective	Pinellas Park Police Dept.	7700 59th St. N	Pinellas Park	33781	743-0568		<a href="mailto:Bdimaculangan@Pinellas-Park.com">Bdimaculangan@Pinellas-Park.com</a>
Safety Harbor	Boler	Ray	Public Works	Public Works Director	City of Safety Harbor	1200 Railroad Avenue	Safety Harbor	34695	724-1550	724-1510	<a href="mailto:rboler@cityofsafetyharbor.com">rboler@cityofsafetyharbor.com</a>
Seminole	Toney-Deal	Ann	Administration	City Manager	City of Seminole	9199-113th St. N.	Seminole	33772	391-0204 x 109	399-8406	<a href="mailto:atoneydeal@myseminole.com">atoneydeal@myseminole.com</a>
Seminole	Due	Rodney	Public Works	Public Works Director	City of Seminole	9199-113th St. N.	Seminole	33772	397.6383 x249	391-9435	<a href="mailto:Rdue@myseminole.com">Rdue@myseminole.com</a>
St. Petersburg	Heyward	Marlin	Youth Resource Division	Sergeant	St. Petersburg Police Dept.	1300 1st Ave N	St. Petersburg	33705	893-4027	893-4905	<a href="mailto:phillip.brewer@stpete.org">phillip.brewer@stpete.org</a>
St. Petersburg	Frederick	Michael	Transportation	Neighborhood Transportation Manager	1744 Ninth Avenue North		St. Petersburg	33713	893-7843	893-7212	<a href="mailto:michael.frederick@stpete.org">michael.frederick@stpete.org</a>
St. Petersburg	Schmidt	Diana	Transportation	School Guard Supervisor	City of St. Petersburg	1744 9th Ave N.	St. Petersburg	33713	893-7396	893-7212	<a href="mailto:Diana.Schmidt@stpete.org">Diana.Schmidt@stpete.org</a>
St. Petersburg			Engineering Dept	Civil Engineer III	City of St. Petersburg	One 4th St. N, 6th Floor	St. Petersburg	33701	892-5383		<a href="mailto:Brejesh.Prayman@stpete.org">Brejesh.Prayman@stpete.org</a>
St. Petersburg	Leno	Tony	Engineering	Capital Projects Coordinator	City of St. Petersburg	One 4th St. N, 6 <sup>th</sup> Floor	St. Petersburg	33701	893-7850	892-5243	<a href="mailto:tony.leno@stpete.org">tony.leno@stpete.org</a>



AGENCY	LAST NAME	FIRST NAME	DEPARTMENT	TITLE	ADDRESS1	ADDRESS2	CITY	ZIP	PHONE	FAX	EMAIL
St. Petersburg	Stacks	Cheryl	Transportation and Parking Management Dept.	Transportation Manager	City of St. Petersburg	One 4th St. N, 8th Floor	St. Petersburg	33713	892-5328	551-3326	<a href="mailto:cheryl.stacks@stpete.org">cheryl.stacks@stpete.org</a>
St. Petersburg	Cruse	Lucas	Transportation and Parking Management Dept.	Bicycle Pedestrian Coordinator	City of St. Petersburg	One 4th St. N, 8th Floor	St. Petersburg	33713	892-5274		<a href="mailto:Lucas.Cruse@stpete.org">Lucas.Cruse@stpete.org</a>
TBARTA Tampa Bay Area Regional Transportation Authority	Case	Michael	(TBARTA)	Senior Planner and Project Manager		4350 West Cypress St. Suite 700	Tampa, FL	33607	813-282-8200 1-800-998-RIDE (7433)	813-282-8700	<a href="mailto:Michael.Case@tbarta.com">Michael.Case@tbarta.com</a>
Tarpon Springs			Tarpon Springs Police Department		City of Tarpon Springs.	444 S. Huey Ave.	Tarpon Springs	34689	938-2849 or 919-7167 cell	937-0193	<a href="mailto:t5">t5</a>
Tarpon Springs	Mathis	Taurean	Tarpon Springs Police Department	Corporal, Supervisor of SRO's	City of Tarpon Springs.	444 S. Huey Ave.	Tarpon Springs	34689	938-2849 or 919-7167 cell	937-0193	<a href="mailto:tmathis@tspd.us">tmathis@tspd.us</a>
Tarpon Springs	Ruggiero	Frank	Police Department	Corporal Supervisor SRO	City of Tarpon Springs.	445 S. Huey Ave.	Tarpon Springs	34689			<a href="mailto:fruggiero@tspd.us">fruggiero@tspd.us</a>
Tarpon Springs	Young	Jeff	Police Department	Operations Captain	City of Tarpon Springs	444 S. Huey Ave.	Tarpon Springs	34689	938-2849	938-7848	<a href="mailto:jyoung@tspd.us">jyoung@tspd.us</a>
Tarpon Springs	Funcheon	Tom	Public Works	Director		324 E. Pine St.	Tarpon Springs	34688	727(942-5610	727(943-9609	<a href="mailto:tfuncheon@ctsfll.us">tfuncheon@ctsfll.us</a>
Tindale-Oliver & Assoc. Inc.	Tait	Gary S.		School Safety Expert	Tindale-Oliver & Associates, Inc	1000 N. Ashley Dr., Suite 400	Tampa, FL	33602	813-224-8862 cell 813-857-3716	813-226-2106	<a href="mailto:gtait@tindaleoliver.com">gtait@tindaleoliver.com</a>
Treasure Island	Taylor	Trent	Police Dept.- Lieutenant	Administration	Treasure Island Police Department	180-108 <sup>th</sup> Ave.	Treasure Island	33706	547-4592	547-4597	<a href="mailto:ttaylor@mytreasureisland.org">ttaylor@mytreasureisland.org</a>



A lifetime of being active can begin . . . . . on the way to school.

## Seeking Solutions to Advance Walking and Biking at Your School

### Safe Routes to School Application Workshop - UPDATE

**October 8, 2018**

Florida Department of Transportation

District 7

11201 N McKinley Dr, Tampa, FL 33612

9 am – 12 pm

RSVP: October 1, 2018 to

[Ginger.Regalado@dot.state.fl.us](mailto:Ginger.Regalado@dot.state.fl.us)

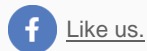
This 3-hour workshop explains the SRTS Program, gives you tips on how to: structure a competitive grant, complete the application, and improve its chances of being selected for some of the \$7,000,000 in Florida's SRTS funding this cycle. Local staff will be going over areas that need improvements in the applications received. We will also be introducing a new initiative: reevaluating all the previously awarded infrastructure projects for effectiveness. This will help in determining whether the current criteria will need to be changed. Also, your local SRTS Educators will be letting you know what is going on. It will be worth your time in attending.

**FDOT Central Office staff as well as District 7 staff will be on hand to answer your questions.**

# Save the Date

Safe Routes to School National Conference

November 12-14, 2019



Mark your calendars!

The Safe Routes to School National Conference is Coming to Florida!

The 2019 Safe Routes to School National Conference will be held at the Hilton Tampa Downtown from November 12-14, 2019. Be sure to save the date for this fabulous opportunity to join hundreds of active transportation and public health advocates and practitioners from across the country for valuable networking, sharing best practices, and exploring one of Florida's most vibrant and active cities.

The Safe Routes to School National Partnership wishes to extend warm thanks to the presenting sponsor, Florida Department of Transportation, and the Hillsborough Metropolitan Planning Organization, who is our local host and partner for this event.

*Spend two days with leaders in Safe Routes as they address today's most pressing challenges and hot topics. You'll go home with new strategies and techniques to share to continue the movement.*

**-Sarita Taylor, FDOT Safe Routes to School Coordinator**

*We welcome the Safe Routes to School National Conference to Tampa. Safe roads for kids are safe roads for everyone. Hillsborough's Vision Zero Coalition and the Gulf Coast Safe Streets Summit look forward to celebrating the work of the National Partnership!*

**- Beth Alden, AICP, Hillsborough MPO Executive Director**

We will share more information about the conference in the months ahead; for now, mark the date on your calendar and plan to attend the conference and consider a fun-in-the-sun trip to Florida with friends or family.





Safe Routes  
to School  
**National  
Partnership**

# Keep Calm and Carry On to School: Improving Arrival and Dismissal for Walking and Biking



A student's experience arriving at school sets the tone for the entire school day. But often, the last block of the school commute is challenging and unwelcoming, in particular for students arriving on foot or by bicycle. School travel by family cars accounts for 10 to 14 percent of vehicle trips made during morning rush hour.<sup>1</sup> High traffic volumes near schools and disorganized drop offs and pick-ups mean that families feel afraid to let children walk or bicycle—resulting in even more cars at schools. Chaotic drop offs and pick-ups make the front of the school into a high stress environment, with negative effects on student safety and the learning environment. How can we improve safety and comfort during school arrival and dismissal for students walking and bicycling, encouraging more active travel versus drop off and pick up by car?

This infobrief provides information on how schools, school districts, cities and counties, and community partners can address arrival and dismissal in developing school travel plans, as well as other planning, policy, and programming efforts. While each school needs to employ specific approaches customized for its particular site configuration, adjacent street network, and surrounding neighborhood, this infobrief outlines general strategies, best practices, and considerations to improve school arrival and dismissal. We begin with an overview of key principles for a successful arrival and dismissal program and then describe specific strategies and techniques in three categories: engineering, operations and programming, and education and enforcement.

## Key Concepts

When developing and implementing a school arrival and dismissal program, keep in mind the following key overarching principles that apply to all school settings.

- 1. Prioritize walking and biking:** When developing and implementing strategies, take care to prioritize walking and bicycling over cars. Vehicle drop offs create a variety of problems, endangering students walking and biking along the route to school, threatening those who have exited other cars or buses, and creating air pollution near schools that can worsen asthma and other chronic lung conditions. Improving arrival and dismissal for students walking and bicycling may have a secondary effect of improving traffic operations overall. But if an arrival and dismissal program makes drop off and pick up easier to the point that it encourages more families to drive their students to school, the overall effect is to worsen health, safety, and air quality for students. To support the well-being of students, strategies need to place the safety and comfort of students walking and bicycling first.
- 2. Use a variety of approaches together:** A successful arrival and dismissal program requires using strategies that encompass multiple approaches from the 6 E's of Safe Routes to School: Engineering (changes to street design, parking lots, and the physical infrastructure or layout on and off campus), Education (providing information to and promoting awareness of proper

behaviors by people driving, walking, and biking), Encouragement (programs that make it easier to and incentivize walking and biking), Enforcement (reinforcing proper behaviors), Evaluation (periodically assessing effectiveness of the program and adjusting as needed), and Equity (ensuring all students benefit from, and no groups are negatively affected by, the infrastructure, policies, and programs). Using just one approach is unlikely to address all of the issues – a strategy that involves engineering approaches coordinated with approaches from the other E's is often needed.

- 3. Separate modes:** The biggest danger to children at arrival and dismissal comes when cars get close to children walking, biking, or exiting the bus. Separating the different modes of travel (private vehicles, buses, people walking, people bicycling) through engineering strategies, operational strategies, or both, is crucial in reducing conflicts in school zones and improving safety and comfort for everyone. Each mode needs a well-defined path of travel across school grounds. This includes making the paths for walking and bicycles highly recognizable and visible for children.
- 4. Clearly communicate about who goes where:** An arrival and dismissal program should communicate who (people walking, biking, buses, cars) goes where clearly and consistently, through signs, pavement markings and other indicators at the school site, as well as through informational materials and messaging distributed to families and students.

### Taking Steps to Improve Arrival and Dismissal

Improving arrival and dismissal at your individual school will require assessing what changes will be most appropriate, implementing changes with partners, and evaluating and adjusting. Here are some key steps.

- 1. Assess existing conditions.** Observe school arrival and dismissal. Document challenges, including areas that are particularly congested or uncomfortable, as well as unsafe behaviors by drivers and students. Talk with families, students, bus drivers, and crossing guards and capture their thoughts as well. Worksheet [such as this one](#) from the Virginia Safe Routes to School Program can be used to document observations and input.
- 2. Work with partners to identify potential solutions.** Key stakeholders to involve include school district facilities and transportation staff, school administration, and city or county transportation or public works staff.
- 3. Create a plan.** This can be a formal document such as a circulation plan that with specific details regarding engineering changes and anticipated paths of travel, or a less formal plan that lays out key actions and steps each stakeholder will take.

- 4. Implement changes.** Put engineering, operational and programmatic, and education and enforcement strategies in motion. Permanent engineering changes may take longer to implement, but operational, programmatic and even temporary infrastructure changes using cones or other low-cost materials can often be put into place quickly.
- 5. Evaluate and adjust.** Conduct follow up arrival and dismissal observations. Document what is working well and any areas that may not be working as anticipated. If there are aspects that can still be improved, work with partners to adjust, change, or add strategies.

School districts can support strong arrival and dismissal at new schools and improvements across existing schools by updating transportation policies and facilities planning and design policies and requirements to include provisions for students walking and biking that address the key concepts described in this infobrief.

## Strategies and Techniques

School arrival and dismissal can be improved through strategies that include programming and changes to the infrastructure at and around the school. A combination of strategies is needed at most schools to successfully improve arrival and dismissal. The remainder of this infobrief describes best practices, considerations, and strategies and techniques in three categories: engineering; operations and programming; and education and enforcement. These strategies are intended to address issues at existing school sites, but the underlying principles and concepts can be considered when designing new school sites in order to make arrival and dismissal safe and pleasant from the start.

### Street Design/Engineering Strategies

Making sure that our physical spaces – streets and schools – are designed to be safe and comfortable for students walking and biking is at the heart of the engineering strategies discussed in this section. Engineering strategies are used to reduce or eliminate interaction between the different modes of travel at and around the school campus, and to improve comfort of students walking and biking. Each school site is different and the appropriate engineering strategies will depend on the school location and building layout, adjacent roads, and neighborhood context. This section starts with general best practices and considerations to support students walking and bicycling and then describes considerations for on-site as well as on-street/off-campus vehicle drop off and pick up areas.

#### 1. Best Practices to Support Students Walking and Bicycling

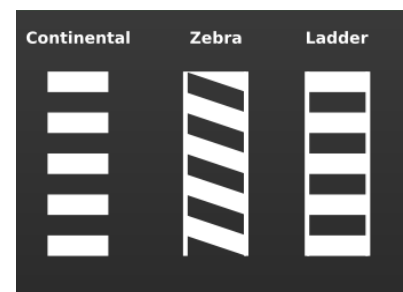
Here are best practices to support students walking and bicycling on and around the school campus.

- Walkways should be a minimum of eight feet wide to accommodate groups walking together.<sup>2</sup>
- Shared paths should be a minimum of 11 feet wide to accommodate both walking and biking.<sup>3</sup>
- Walkways should provide direct, easy access for people walking, avoiding inconvenience or cutting across areas that may be more dangerous.
- Illuminate walkways with pedestrian-oriented lights (not just high lights that illuminate the street for cars) that will be used in early or later dark hours.
- Design walkways to eliminate or minimize crossing driveways.
- Designate walking and bicycling routes that do not cross parking lots or vehicle drop off/pick up areas.
- Provide a continuous walkway across driveways. Retain sidewalk paving and level walking path.
- Provide high-visibility crosswalks when walkways have to cross driveways, parking lots, or other vehicle areas.



*Left: Level walking path provides a continuous walkway across a driveway. Right: Trees improve the attractiveness of the walking path, and pedestrian-oriented lighting ensures visibility for people walking in early or later hours.*

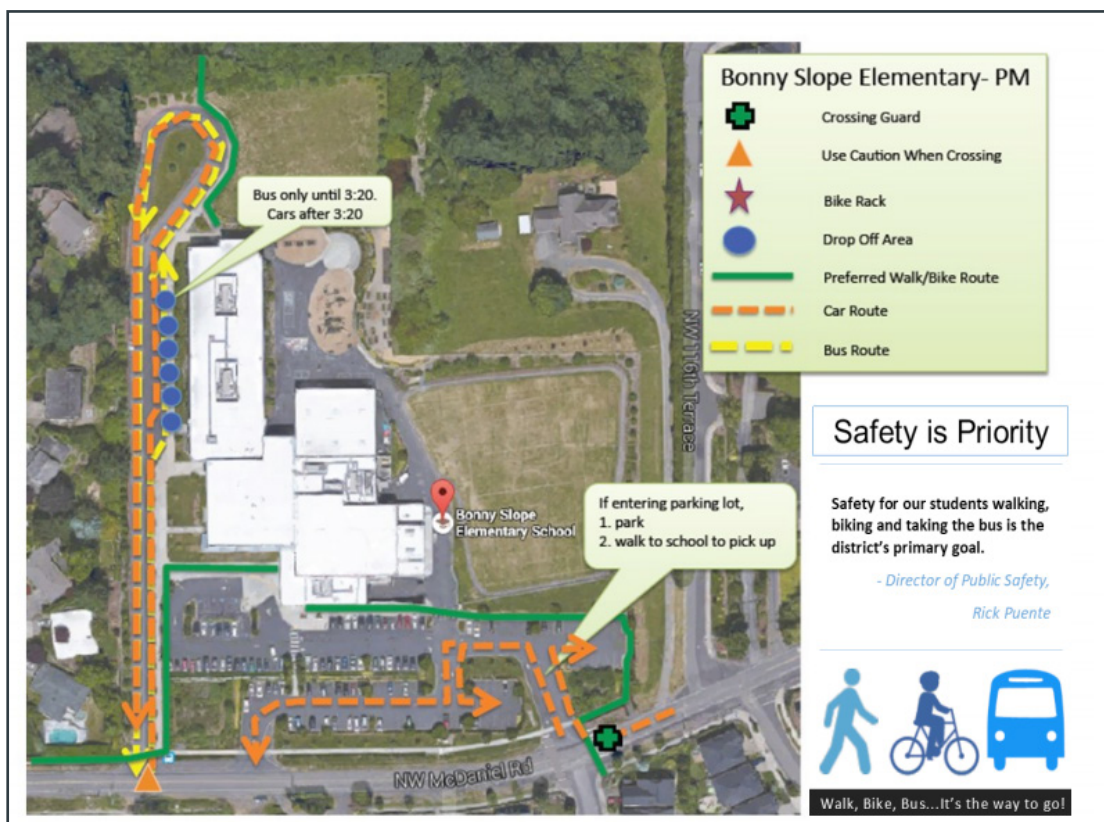
- Minimize driveway width to reduce exposure time for pedestrians and slow speeds of cars turning.<sup>4</sup>
- Provide easy and direct access to bike parking without requiring people biking to dismount until they reach the bike racks.
- Families may prefer to walk with their student all the way to the school door. Entrances should have space around them to accommodate this.
- Consider landscaping, shade elements such as canopies, art features, and other ways to make walkways attractive and welcoming for people on foot.
- Consider destinations where students may go before or after school, whether adjacent, across the street, or nearby. Assess the pedestrian and bicycle linkages to nearby parks, libraries, community centers, food retail locations, and other facilities that attract students.



*Examples of crosswalk treatments that improve visibility when walkways cross driveways, parking lots, or other vehicle areas.*

## 2. Best Practices and Considerations for On-Site Vehicle Drop Off and Pick Up Areas

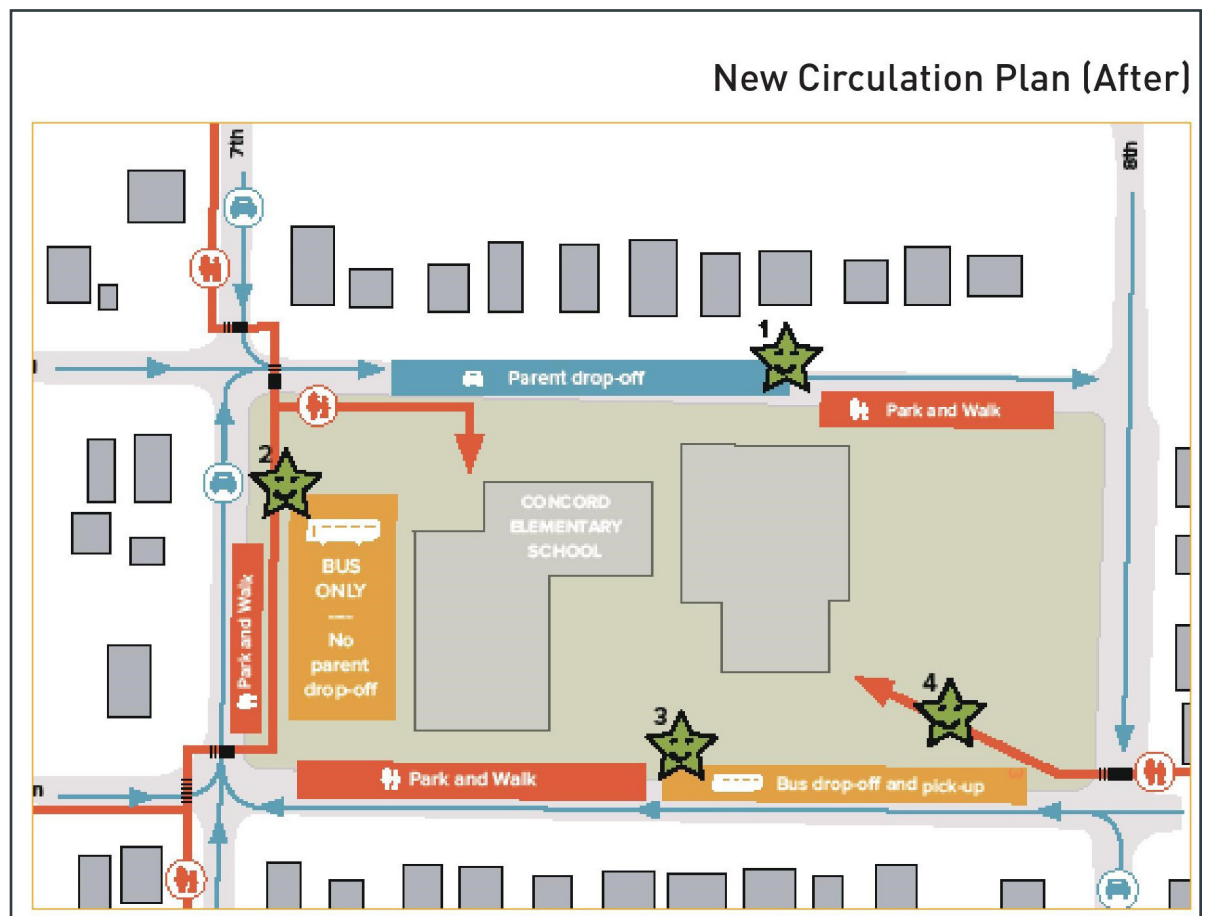
- When the school layout allows for it, provide paths for students to enter campus on foot or by bike from the neighborhood that are completely separated from parking lots, car drop off and pick up areas, and bus loading. This addresses many safety issues and creates a more comfortable environment for students walking and bicycling.
- Separating drop off and pick up areas, parking lots, and bus loading is the most desirable configuration, where space allows. This prevents parents from bypassing the drop off/pick up area and using the parking lot or bus area where students would need to walk between parking cars or buses. Use cones or signage to let parents know to not enter the parking lot or bus area.
- Some schools across the country have received approval to use the fire lane as a temporary pick up/drop off lane. This requires approval from the fire marshal.
- Vehicles should move through the drop off/pick up area counterclockwise and students should be able to enter and exit directly to the sidewalk without having to walk around or between cars. This should also be done for bus loading and unloading.
- A single drop off/pick up line is most desirable to prevent students from having to walk between cars. If absolutely necessary, a second line can be formed, but staff or volunteers need to assist students with crossing between cars.
- Plan adequate space to queue vehicles without blocking sidewalks, crosswalks, and walkways. The space needed will depend on how many cars are expected at the individual school. If adequate space is not available for queuing, consider adding off-site areas. If queuing potentially crosses sidewalks, crosswalks, or walkways, assign a person to keep these areas clear of cars.
- One way to allow for off-site queuing is to stripe a center turn lane for cars to pull into and wait while not blocking through traffic.
- Moving through the drop off/pick up area should never require a car to back up.
- Drop off/pick up areas should have all or most vehicles exit by making a right turn, avoiding left turns that require cutting over a lane of traffic. Avoid having crosswalks close to the driveway exit where drivers may be more focused on turning and less likely to be watching for people crossing the street.
- The grade for all vehicle paths on-campus should be a maximum of 5 percent to prevent visibility issues caused by slope.<sup>5</sup>
- Ensure adequate sight lines by prohibiting parking or stopping in or near intersections and crosswalks. Twenty feet from intersections and crosswalks is generally acceptable. Also take into consideration height of children when determining sight line needs.



Left: An example of on-site pick up. Circulation plan shows cars are only allowed on campus after buses leave. Pick up lane is separated from parking area. Students are able to leave the campus on foot or bike in different directions. From Beaverton Safe Routes to School.



3. Best Practices and Considerations for On-Street (Off-Campus) Drop Off and Pick Up Areas



Right: An example of on-street drop off. Circulation plan shows parent drop off is only on the north side of the school, separate from bus loading. The parking lot is closed to families. There are designated walkways outside of the drop off areas for students to walk. From *Improve Your School Arrival and Departure Procedures: A Toolkit for School Safety Committees, Feet First.*

## Operational and Programmatic Strategies

Operational and programmatic strategies include arrival and dismissal procedures and supportive programs that can improve driver behavior, reduce or eliminate interaction between cars and students walking and bicycling, and promote more walking and bicycling overall. Operational and programmatic approaches encompass strategies from the Encouragement “E” of Safe Routes to School. Here are some operational and programmatic strategies that can be considered.

As an alternative to on-campus pick up and drop off areas, on-street (off-campus) areas can be designated. This requires working with the local traffic engineering or public works department that controls the streets adjacent to the school to design a plan that considers other property owners and traffic patterns.

- On-street drop off and pick up areas are most appropriate when there is not a lot of other non-school traffic and when the drop off and pick up areas can function without blocking driveways and access to other properties.<sup>6</sup>

### Dismissal Procedures

<b>Front Cross Walk Closed : until further notice</b>	<b><u>3:47 pm- 3:55 pm</u></b>
<b>Staggered Dismissal Times: / Car Riders</b>	<b>Walkers 3:40 pm 3:45 pm</b>
<b>Playground Closed:</b>	<b>3:40-4:00 pm</b>

#### Walkers, Bikers, Parents Walking to Pick up Students

- Dismissal at **3:40 pm MTRF 2:10 pm** on Wednesday
- **Exit from the Kindergarten Door, North side of building-no front door dismissal**

#### Car Riders

- Dismissal at **3:45 pm**
- Exit from the **Front Door**
- **Stand in grade level designated area on blue line on main sidewalk-Kdg. will stand in front of the kdg. doors.**
- **Students with siblings- older students will stand with youngest sibling**
- **All students should enter and exit their car curb side-they should not exit street side and parents should stay inside the vehicle**



#### Bus Riders & Boys and Girl Club

- Dismissal from club

• Treat on-street drop off and pick up areas as you would do on-campus. Above Dismissal procedures from Langston Hughes Elementary. Use a single drop off/pick up lane and only allow students to enter/exit from the curb. See the section above for other best practices and considerations for on-campus areas.

- Be sure to consider the flow of non-school traffic and other neighbors. Frustration can lead to angry neighbors, drivers cutting around other cars, and unsafe behaviors that endanger students.

- Preferred strategies and configurations will depend on the local context. Options include creating one-way streets, partial road closures, or full road closures. These could be done temporarily by using cones, signage, and blockades during arrival and dismissal, or may be permanent changes.
- A clear plan should be provided to drivers that shows where and how to drop off/pick up. Without a clear plan, unsafe behaviors such as double parking, cars making unsafe U-turns, and students walking between cars can become concerns.
- Signs and markings should follow consistent general standards to ensure that users understand them easily and avoid confusion. On-street curb markings, pavement markings, and signs should, and are likely legally obligated to, follow adopted standards, such as those in the Manual on Uniform Traffic Control Devices (MUTCD). This promotes clear messages to drivers, pedestrians, and bicyclists that are consistent with signage and markings that they see elsewhere.





Image: Orange County Health Care Agency

### 1. Staggered Dismissal

Staggering dismissal times reduces the amount of congestion at and around the school during peak times. Dismissal times can be staggered by grade to reduce the number of parents picking up at once. Dismissal times can also be staggered by mode of travel to reduce conflicts between the different modes. If you are staggering dismissal by mode of travel, walkers and bicyclists should always be dismissed first as to not discourage walking and biking.

#### Additional Resources

- [School On-Site Design](#) from Institute of Transportation Engineers provides additional information on engineering strategies to improve school campuses for students walking and bicycling.
- [Walk to school? But how do I find the front door](#) from WalkBoston provides guidance on creating a walkable school campus.
- [Improve Your School Arrival and Departure Procedures: A Toolkit for School Safety Committees](#) from Feet First provides worksheets and templates for school and parent groups to assess and implement changes to school arrival and dismissal.
- [Best Practices Guide for School Carpool Lines](#) from Clean Air Carolina provides additional information about organizing a successful carpool program.

### 2. Remote Drop Off/Pick Up

One way to reduce traffic congestion at the school campus is to designate areas away from the campus for parents to drop off and pick up their children. These are also called “walk on in” programs. In a remote drop off program, children are driven most of the way to school, but are then dropped off a short distance from school – often a quarter mile – so they can walk the remainder of the way. A remote drop off site may be a park, a parking lot, a church, or anywhere else where students can be easily dropped off, can safely congregate, and can follow a relatively safe route to the school.

Once children are dropped off, they may be accompanied to school by a school bus driver, teacher, or adult volunteer, or may walk on their own, depending on their age and how the program is structured. Some school transportation departments have school buses drop students off at remote drop off sites as well.

Besides reducing traffic congestion at the school campus, remote drop off programs can have a physical activity goal. In such programs, the remote drop off locations may be located further away to increase the distance students are walking.

## Education and Enforcement Strategies

A successful arrival and dismissal program must include educating students and families on the arrival and dismissal procedures and enforcing proper behaviors. Here are some strategies to provide education and enforcement around arrival and dismissal.

### 3. Walking School Bus

A walking school bus is a way for children to travel to and from school on foot with adult supervision. It offers a safe, dependable, active way for children to get to school versus being driven in a car. It reduces the number of cars at and around the school, while encouraging students to walk. Each “bus” walks along a set route with one or more adults leading it, picking children up at designated stops along a predetermined route and walking them to school. The process is reversed in the afternoons on the way home from school. Refer to [Step by Step: How to Start a Walking School Bus at Your School](#) for more information.

online or other matching program can help families find carpool partners.

### 4. Assisting Students with Exiting/Entering Cars (Valet System)

While a valet system on its own does not improve arrival and dismissal for walking and bicycling, it can lead to more organized drop off and pick up and reinforce proper driver behavior. In a valet system, staff, volunteers, or older students help students enter and exit cars by prompting cars to move forward in the line, opening doors, and helping students enter/exit safely to/from the curb. The valets can encourage students to exit on the right side of the car and discourage cars from cutting around one another. A best practice to reduce delays and promote organization is to load and unload multiple cars at a time by having three to four cars pull into the designated area at once.

### 5. Encouraging Carpooling

Carpooling does not necessarily encourage walking and bicycling, but it can reduce the number of cars at and around the school during peak hours, which can reduce conflicts and improve safety and comfort overall. Some schools encourage carpooling by creating a priority lane for carpool pick up/drop off or only allowing carpool cars to enter the lane during certain hours (i.e. first at pick up). An

## Conclusion

Improving school arrival and dismissal can be transformative, changing the critical time at the start and end of the school day from a chaotic, stressful experience to one where students and families feel comfortable, relaxed, and welcomed. By taking the steps suggested in this resource, you can assess existing conditions, identify areas that could be improved, and work with partners to make change.

## References

1. McDonald N., Brown A., Marchetti L., Pedroso M. (2011). U.S. School Travel 2009: An Assessment of Trends. *American Journal of Preventive Medicine*, 41(2), 146-151.
2. School Access, Federal Highway Administration
3. School Access, Federal Highway Administration
4. School Access, Federal Highway Administration
5. New Jersey School Zone Design Guide, New Jersey Department of Transportation
6. Walk to school? But how do I find the front door, WalkBoston
7. Improve Your School Arrival and Departure Procedures: A Toolkit for School Safety Committees, Feet First

# 2018 State Report Cards



## On Support for Walking, Biking, and Physical Activity

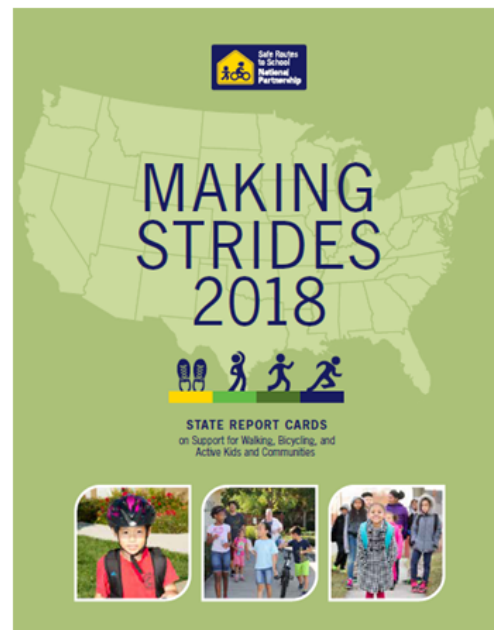
### *Updated Report Cards Grade Each State's Support for Walking, Biking, and Active Communities*

The Safe Routes to School National Partnership and the Y have released [\*Making Strides: 2018 State Report Cards on Support for Walking, Bicycling, and Active Kids and Communities\*](#), a report that helps state leaders and decision makers prioritize transportation investments, resources, and policies that support walkable communities.

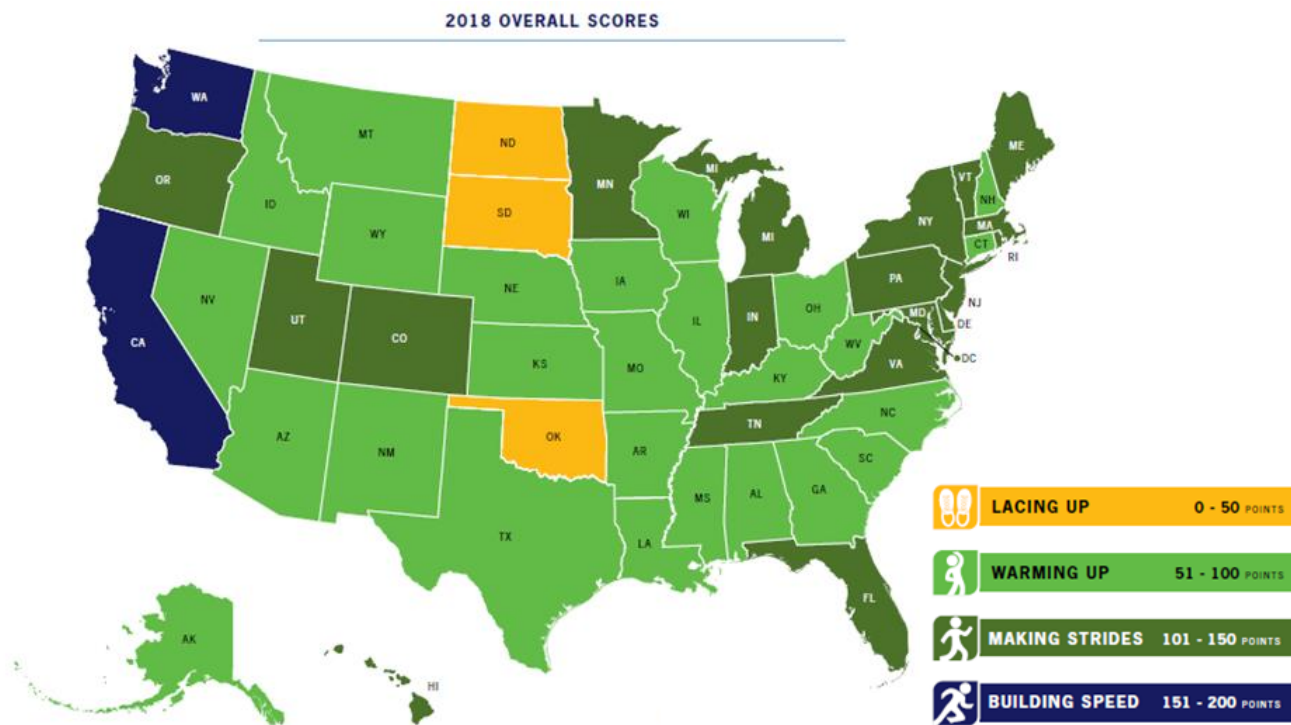
The rankings show that there is enormous opportunity for states to enact new, health-promoting, evidence-based policies—and strengthen existing ones that will benefit our communities. The report finds that a majority of the states rank in the middle categories of “Warming Up” and “Making Strides,” with only two states ranking in the highest category of “Building Speed,” and three states ranking as “Lacing Up,” the lowest category.

Each state was evaluated using 27 indicators, with several new indicators including: Adopted a bicycle, pedestrian, or active transportation plan; Supports walking, bicycling & physical activity in school design guidelines; and Funds Safe Routes to School non-infrastructure projects. These indicators were then applied across four strategic areas:

- Complete Streets and Active Transportation
- Safe Routes to School and Active Transportation Funding
- Active Neighborhoods and Schools
- State Physical Activity Planning



The findings show that over the past two years, many states have made considerable progress in their support for walking and biking. Nearly twice as many states are providing state dollars for Safe Routes to School programs, and more states are providing funding for shared use and hiring dedicated staff for physical activity. At the same time, there are still many opportunities for states to strengthen their support for healthy, accessible communities – particularly with regards to allowing TAP funding to be used to support Safe Routes to School programs and prioritizing Safe Routes to School programs in TAP competitions.



States can play a significant role in each of these areas to help increase the number of youth and adults walking, bicycling, and being physically active. Advocates and practitioners can use these report cards to help make the case for increased funding and support for programs that improve health and well-being for our communities

[Click here](#) to explore the report, fact sheet guides to using the information, and detailed maps showing each state's status and progress across various indicators of support.

*Copyright © 2018 Safe Routes to School National Partnership, All rights reserved.*  
You're receiving this message because you have expressed interest in improving walking, bicycling, and Safe Routes to School. If you no longer wish to receive emails like these, please unsubscribe.

**Our mailing address is:**  
Safe Routes to School National Partnership  
PO Box 44328  
Fort Washington, MD 20749