



# Environmental Justice

2015 Demographic Analysis Report



# Environmental Justice

## 2015 Demographic Analysis Report

Developed by Forward Pinellas in its role as the Pinellas County Metropolitan Planning Organization for its  
2045 Long Range Transportation Plan

May 2018

*Forward Pinellas  
310 Court Street  
Clearwater, FL 33756  
Phone: (727) 464-8250*

Forward Pinellas Web Site: <http://www.forwardpinellascounty.org>

*This project has been developed in compliance with Title VI of the Civil Rights Act of 1964 and other federal and state nondiscrimination authorities. Neither FDOT nor this project will deny the benefits of, exclude from participation in, or subject anyone to discrimination the basis of race, color, national origin, age, sex, disability, or family status.*

*Funding for this report may have been financed in part through grant[s] from the Federal Highway Administration and Federal Transit Administration, U.S. Department of Transportation, under the State Planning and Research Program, Section 505 [or Metropolitan Planning Program, Section 104(f)] of Title 23, U.S. Code. The contents of this report do not necessarily reflect the official views or policy of the U.S. Department of Transportation.*

## Table of Contents

Introduction	4
Demographic Context	4
Populations for Environmental Justice (EJ) Analysis	4
Minority Population Analysis	9
Areas with High Black or African American Population Alone	9
Areas with High Hispanic or Latino Population (All Races)	11
Areas with High Asian American Population	13
Areas with High American Indian and Alaska Native Population	13
Areas with High Native-Hawaiian or Other Pacific Islander Population	13
Low Income Population Analysis	15
Analysis of Level of Poverty	15
Areas with High Black or African American Population below the Poverty Level	16
Areas with High Hispanic or Latino Population below the Poverty Level	19
Areas with High Asian American Population below the Poverty Level	20
Areas with High American Indian and Alaska Native Population below the Poverty Level	20
Areas with High Native-Hawaiian or Other Pacific Islander Population below the Poverty Level	21
Areas with High White Alone Population below the Poverty Level	22
Summary Analysis	23
Age Analysis	23

### List of Tables

Table 1 - Census Tracts with a Black or African American Population Over 50% in 2015	9
Table 2 - Census Tracts with an Hispanic or Latino Population Greater Than 15% in 2015	11
Table 3 - Census Tracts with an Asian Population Greater than 10% in 2015	13
Table 4 - Poverty Thresholds for 2015 by Size of Family and Number of Related Children Under 18 Years	15
Table 5 - Census Tracts with more than 50% of Black or African American Population below the Poverty Level	17
Table 6 - Census Tracts with more than 50% Hispanic or Latino Population below the Poverty Level	19
Table 7 - Census Tracts with more than 50% of Asian Population below the Poverty Level	20
Table 8 - Census Tracts with more than 25% of the White Population below the Poverty Level	22
Table 9 - Summary Data Analysis for Pinellas County Florida in 2015	23
Table 10 - Census Tracts in Pinellas County Florida Where Median Age Exceeds 65 Years	23

### List of Figures

Figure 1 - Census Tracts Where Minority Population Exceeds Countywide Average of 22.15%	6
Figure 2 - Census Tracts Where Low-Income Population Exceeds 20%	7
Figure 3 – Environmental Justice Minority and Low Income Areas	8
Figure 4 - Total Percentage of Black or African American Population by Census Tract	10
Figure 5 - Total Percentage of Hispanic or Latino Population by Census Tract	12
Figure 6 - Total Percentage of Asian Population by Census Tract	14
Figure 7 - Median Age by Census Tract	24

## **Introduction**

This report provides a summary population analysis conducted to determine the broad geographic location, total number, and the percentage of the population groups address by the U.S. Department of Transportation Order on Environmental Justice, and Executive Order 12898 (Feb. 11, 1994). These groups are: Black or African American, Hispanic or Latino, Asian American, American Indian and Alaskan Native, Native-Hawaiian and Other Pacific Islander, and Low-Income. The analysis advances the tenets of the Environmental Justice legislation focused on Title VI of the 1964 Civil Rights Act. The purpose of the legislation is to ensure nondiscrimination in federally funded activities by identifying and addressing, as appropriate, disproportionately high and adverse human health or environmental effects of its programs in minority and low-income populations. This demographic analysis will be used to develop two maps depicting low income and minority locations in relation to selected federally funded projects in the 2045 Long Range Transportation Plan (LRTP) update. The objective is to anticipate the transportation and community impact of selected federally funded roadway, bicycle and pedestrian, and transit enhancements included in the 2045 LRTP.

## **Demographic Context**

The base population, race and income level data for this analysis was gathered from the 2011-2015 American Community Survey (ACS) 5-Year Estimates at the Census Tract level. Census Tracts are defined by the Census Bureau as small, relatively permanent statistical subdivisions of a county for the purpose of presenting data. Census Tracts are amongst the lowest common denominator of data.

According to the ACS population, the estimated population increased by nearly 33,000 people since 2010 to 949,321 in 2015. The ACS population profile indicates that there were slightly more females than males in Pinellas County, and the median age of residents continued to increase from 43.6 in 2000 to 46.3 in 2010 and 47.1 in 2015. The average household size increased slightly from 2.24 in 2010 to 2.28 in 2015. In 2010, 70.4% of all occupied households were owner-occupied compared to 64.8% in 2015. In 2010, 19.4% of all housing units were vacant. This percentage remained approximately the same in the 2015 ACS estimate.

## **Populations for Environmental Justice (EJ) Analysis**

Information on minority and low income populations was retrieved from the 2011-2015 American Community Survey (ACS) 5-Year Estimates (Minority: ACS Demographic and Housing Estimates/Low Income: Poverty Status in the Past 12 months). Per Capita Income information was also utilized for comparison purposes and this data was drawn from the 2011-2015 ACS 5-Year Estimates: Selected Economic Characteristics.

According to guidance on defining EJ areas, it is recommended that thresholds are set where minority populations exceed either 50% of the population in a geographic area or where the minority population is meaningfully greater than the minority population percentage in the general population. The average minority population by census tract in the county is 22.15%. For the purposes of this analysis, any census tract with a minority population that exceeds 22.15% has been identified as an EJ area. This threshold was set in collaboration with the Forward Pinellas Technical Coordinating Committee (TCC). It was determined that a threshold of 50% was too high for local conditions and would exclude areas with concentrations of minority populations that were significant, in relation to the entire Pinellas County population.

The average low-income population by census tract in Pinellas County increased from 12.1% in 2010 to 14.36% in 2015. Low-income is defined as those living below the poverty level in Pinellas County, as determined by the Census Bureau. Table 4 highlights the 2015 Poverty Thresholds utilized by the Census Bureau. For the purpose of this analysis, any census tract with a low-income population that exceeds a countywide average of 20% has been identified as an EJ area. This threshold was set in collaboration with the TCC.

While the average low-income population by census tract in Pinellas County was 14.36%, the 20% threshold was chosen given the characteristics of the local population. With poverty status determined in part by per-capita income data combined with the large population of retirees in the county, it was decided that using the countywide average would be misleading as many retirees may be utilizing accumulated wealth to supplement any other income. In addition, staff conducted an analysis of those communities identified as having a higher-than-average rate of poverty and determined that some of those communities were actually more upscale retiree communities that should not be included as a part of

this analysis. The following three maps illustrate the census tracts in Pinellas County that will be identified as EJ for the 2045 LRTP update. Figure 1 shows the census tracts where the minority population exceeds the countywide average of 22.15%, while Figure 2 shows those census tracts where the percentage of the population living below the poverty line exceeds 20%. Figure 3 shows the combination of these two maps that identify all EJ areas in Pinellas County. This information will be used for a spatial analysis to determine the levels of transportation investment in EJ versus non-EJ areas, and to ensure that minority and low-income populations in EJ areas will not experience disproportionately high and adverse effects burdened from projects related to the transportation system as well as ensure these areas will not be disproportionately excluded from receiving the benefits of transportation investments. In addition, EJ areas will be targeted for additional public outreach activities to ensure that traditionally underrepresented groups are involved in the transportation planning process.

Figure 1

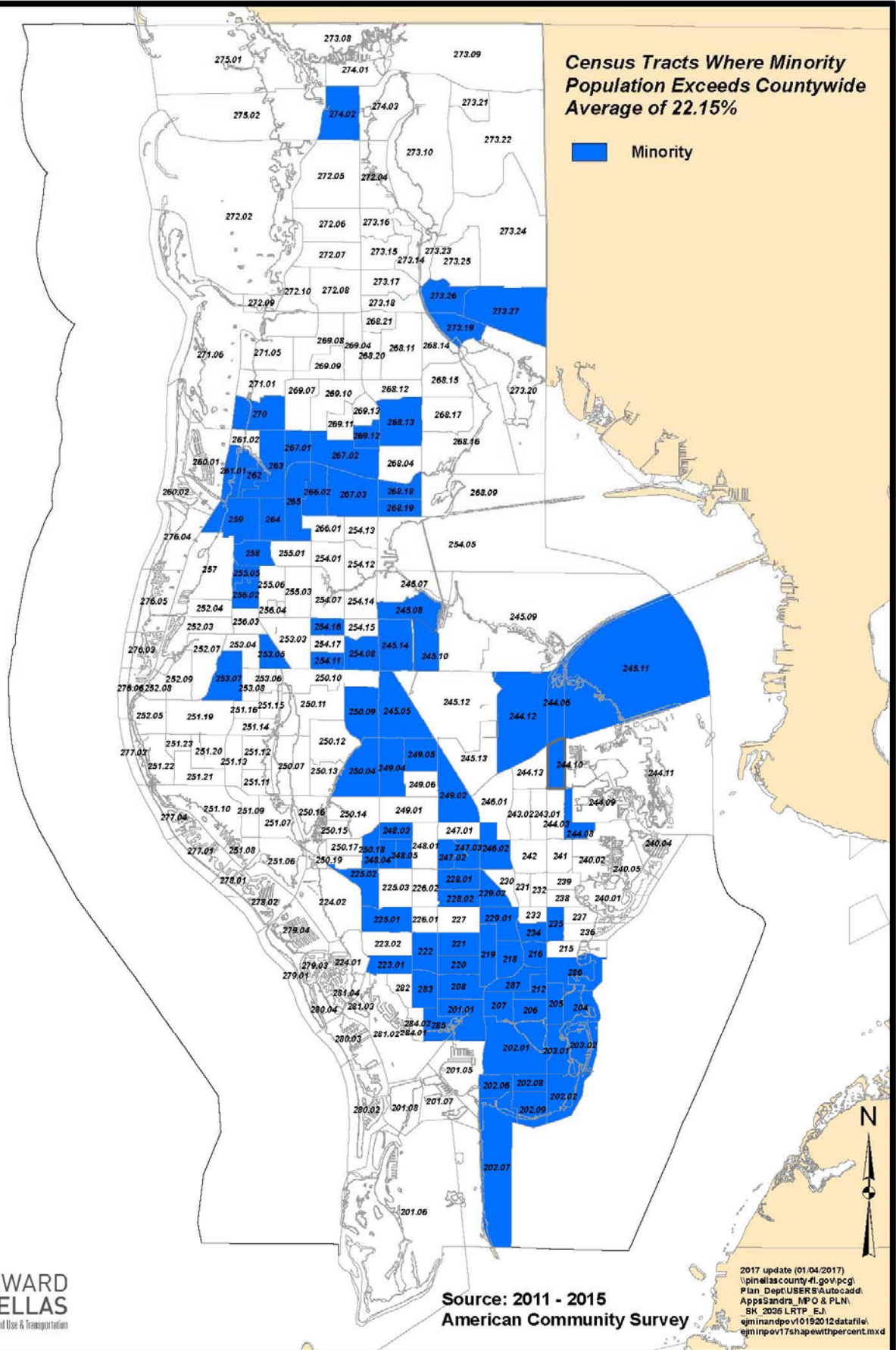
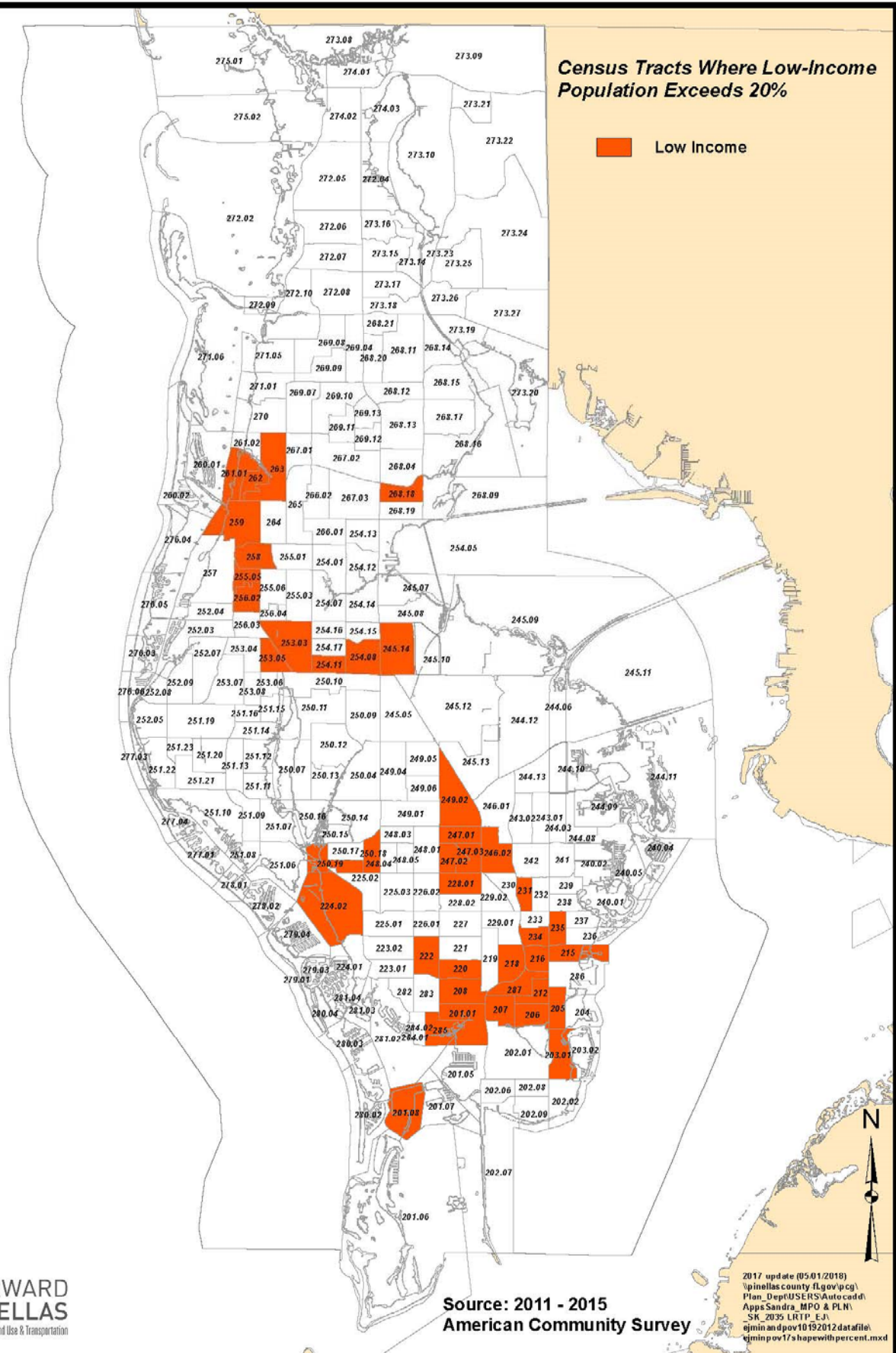


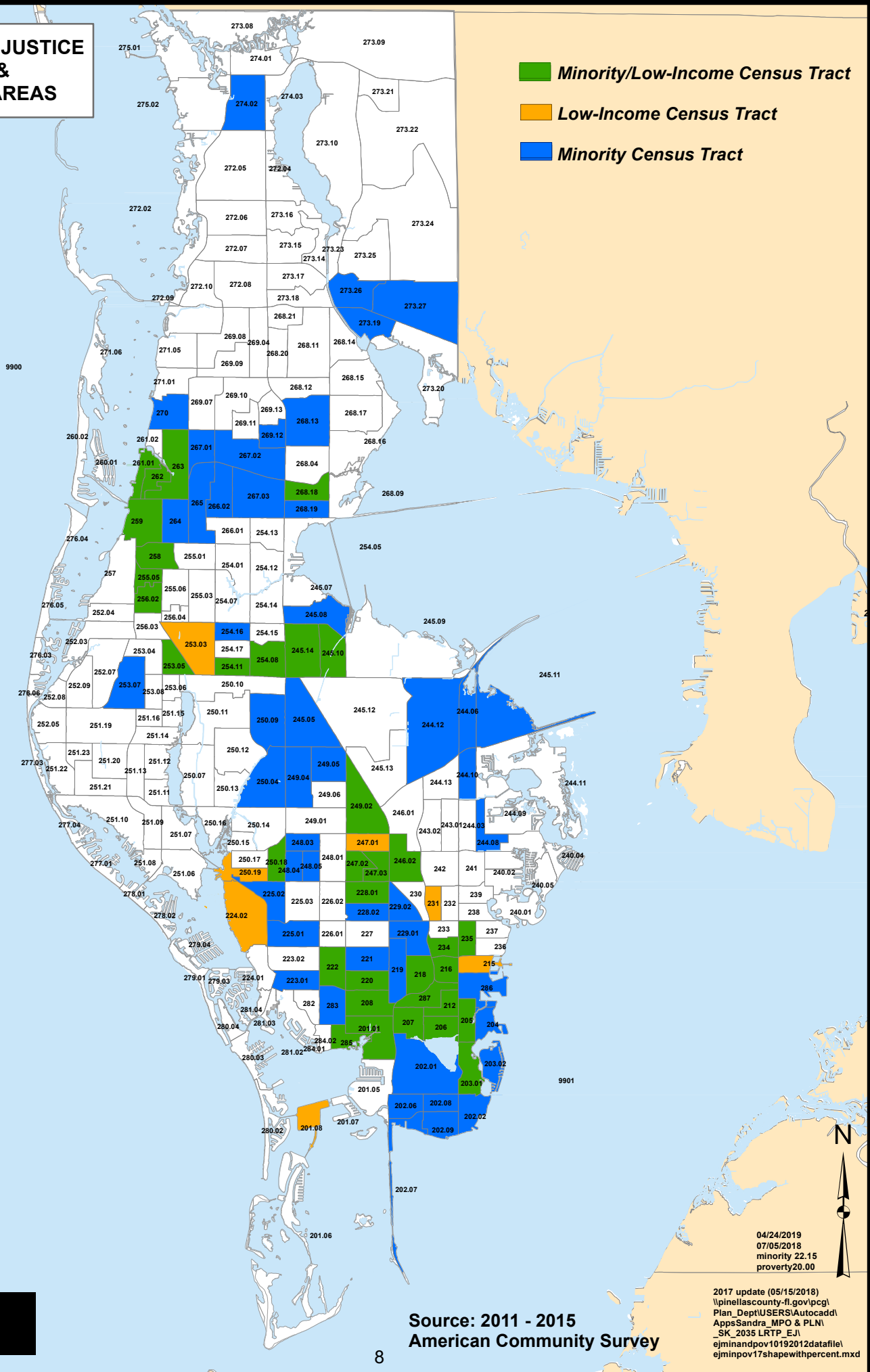
Figure 2



# ENVIRONMENTAL JUSTICE MINORITY & LOW-INCOME AREAS

Figure 3

- Minority/Low-Income Census Tract
- Low-Income Census Tract
- Minority Census Tract



Source: 2011 - 2015  
American Community Survey

04/24/2019  
07/05/2018  
minority 22.15  
poverty20.00

2017 update (05/15/2018)  
\\pinellascounty-fl.gov\pcgl  
Plan\_Dept\USERS\Autocadd\  
Apps\Sandra\_MPO & PLN\I  
\_SK\_2035 LRTP\_EJ\I  
ejminandpov10192012datafile\I  
ejminpov17shapewithpercent.mxd

## Minority Population Analysis

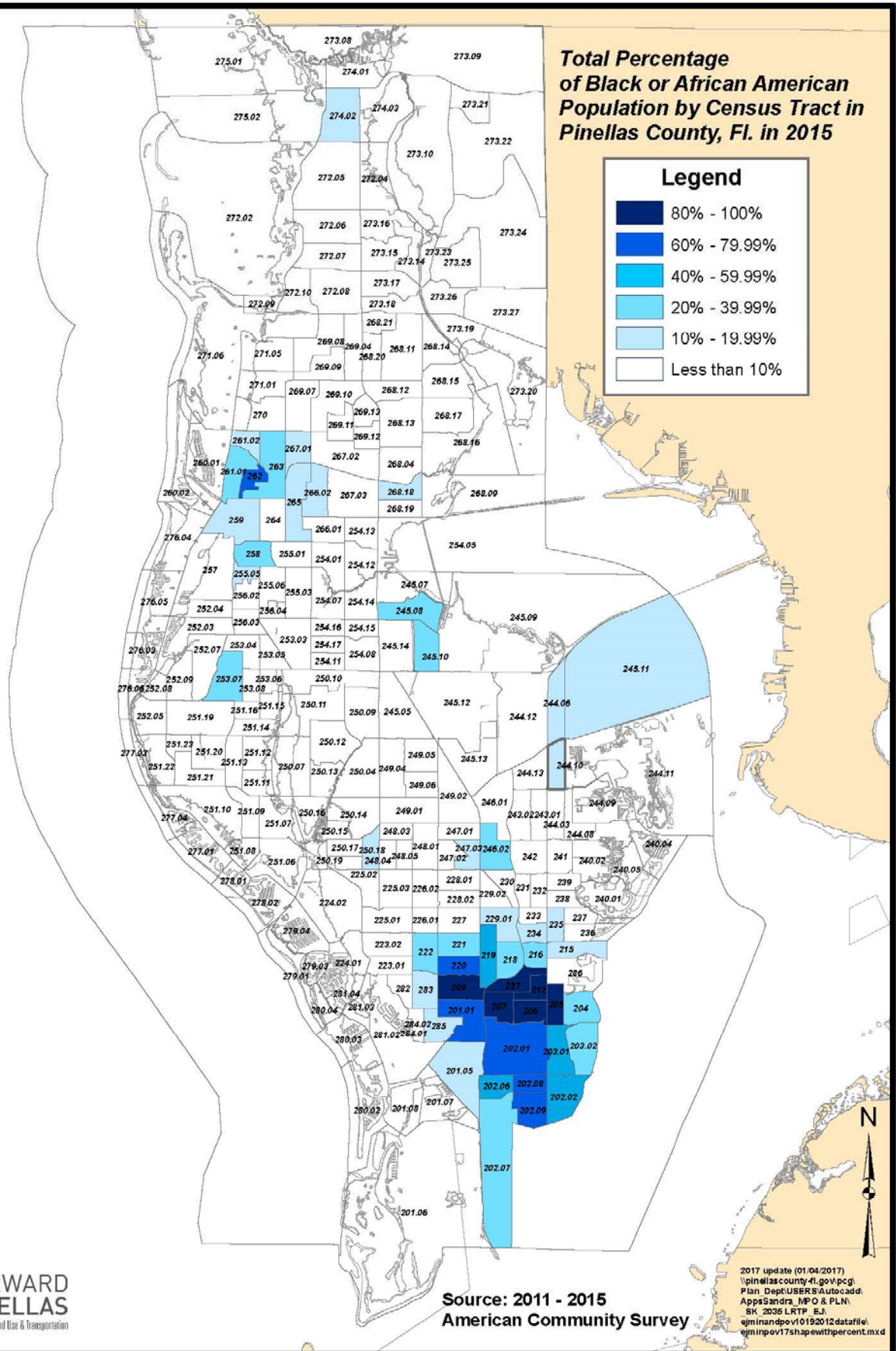
### ***Areas with High Black or African American Population Alone***

Approximately 10.48% (96,133) of the estimated Pinellas County population for whom poverty status was determined in 2015 was Black or African American. The population is scattered throughout the county with concentrations in census tracts ranging from 0.3% to 96.09% of the total census tract population. In 2010, the Black or African American population made up 10.3% (94,745) of the entire population. Table 1 below highlights those census tracts with a Black or African American population exceeding 50% of the census tract population. This threshold was chosen to highlight those census tracts with the highest concentrations of the minority group. Figure 4 displays the geographical distribution of the Black or African American population throughout Pinellas County.

Table 1

Census Tracts with Black or African American Population over 50% in 2015			
Census Tract	Total Population	Black or African American Population	Percentage Black or African American Population
201.01	4,811	3,711	77.14%
202.01	4,963	3,057	61.60%
202.08	2,271	1,780	78.38%
202.09	4,042	2,738	67.74%
205.00	3,251	2,773	85.30%
206.00	4,300	3,959	92.07%
207.00	3,431	3,295	96.04%
208.00	4,632	4,451	96.09%
212.00	3,380	2,941	87.01%
220.00	2,856	2,156	75.49%
262.00	1,943	1,499	77.15%
287.00	2,963	2,719	91.77%

Figure 4



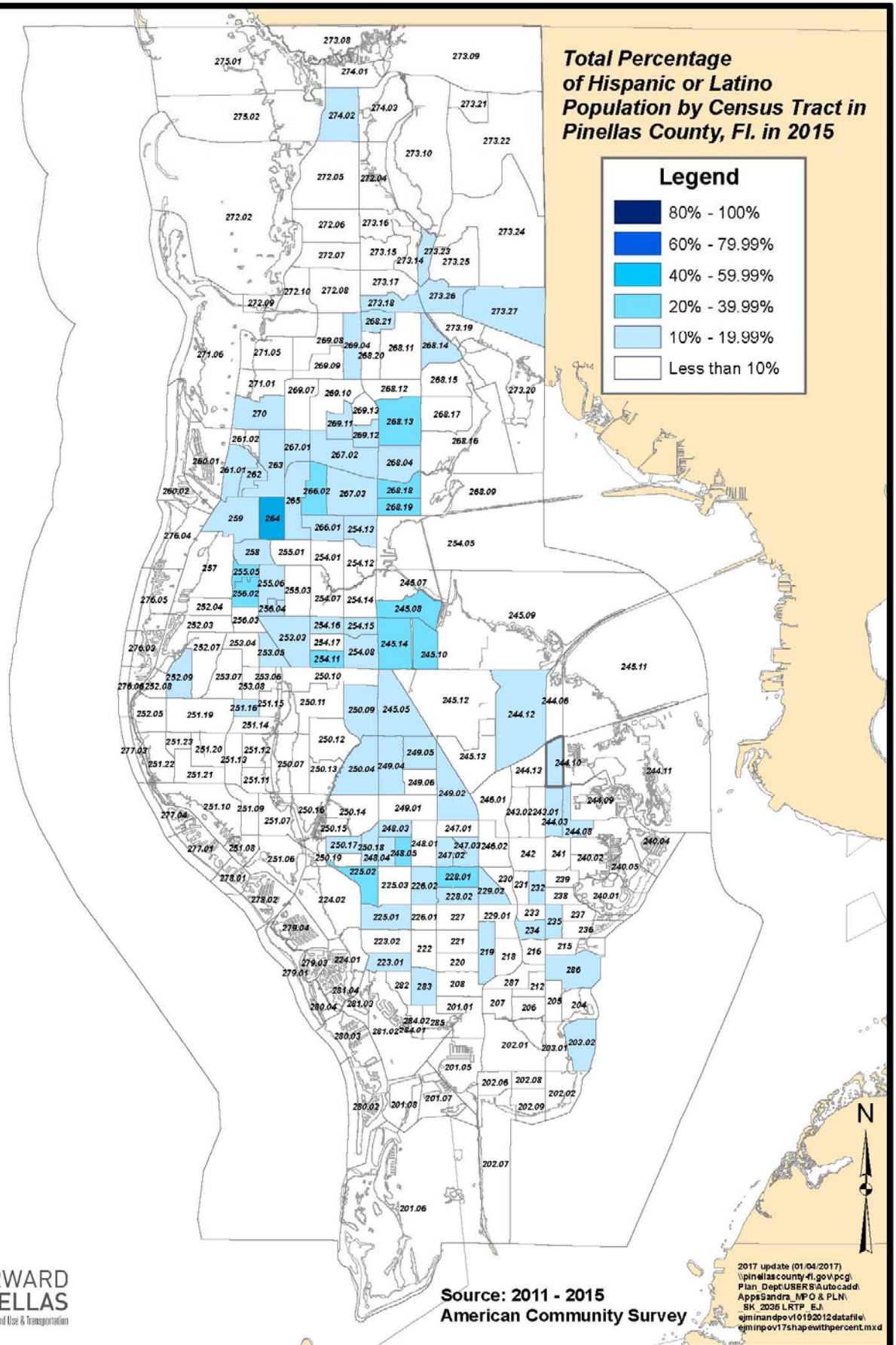
**Areas with High Hispanic or Latino Population (All Races)**

The Hispanic or Latino population comprises people belonging to different racial groups. The population of this group as a whole increased 89% between 2000 and 2015. This group accounted for approximately 4.6% (42,760) of the population in 2000, 8% (73,241) in 2010 and approximately 8.7% (81,038) in 2015. Table 2 below highlights those census tracts with a Hispanic or Latino population exceeding 20% of the census tract population. This threshold was chosen to highlight those census tracts with the highest concentrations of the minority group. Figure 5 displays the geographical distribution of the Hispanic or Latino population.

**Table 2**

<b>Census Tracts with an Hispanic or Latino Population greater than 20% in 2015</b>			
Census Tract	Total Population	Total Hispanic or Latino Population	Percentage Hispanic or Latino Population
225.02	3,921	900	22.95%
245.08	6,325	1,569	24.81%
245.1	2,468	1,170	47.41%
245.14	4,502	955	21.21%
248.05	2,693	561	20.83%
254.11	2,094	497	23.73%
255.05	2,458	824	33.52%
264	6,289	2,674	42.52%
268.13	3,983	1,187	29.80%
268.18	3,936	993	25.23%
268.19	1,993	520	26.09%

Figure 5



**Areas with High Asian American Population**

Asian Americans accounted for 3.2% (29,338) of the population in 2015, an increase from 3% (27,233) in 2010. Table 3 below highlights those census tracts that have an Asian population above 10%. This threshold was chosen to highlight those census tracts with the highest concentrations of the minority group. Figure 6 displays the geographical distribution of the Asian population throughout Pinellas County.

Table 3

Census Tracts with an Asian Population Greater than 10% in 2015			
Census Tract	Total Population	Asian Population	Percentage Asian Population
228.02	3,578	626	17.50%
229.01	2,822	508	18.00%
229.02	2,455	399	16.25%
230	2,493	310	12.43%
245.05	7,705	780	10.12%
245.09	3,352	386	11.52%
247.01	3,375	364	10.79%
247.02	2,075	222	10.70%
248.03	2,616	376	14.37%
248.04	2,136	386	18.07%
248.05	2,693	444	16.49%
249.01	5,635	674	11.96%
249.04	3,702	587	15.86%
250.14	4,726	488	10.33%
281.02	3,463	350	10.11%

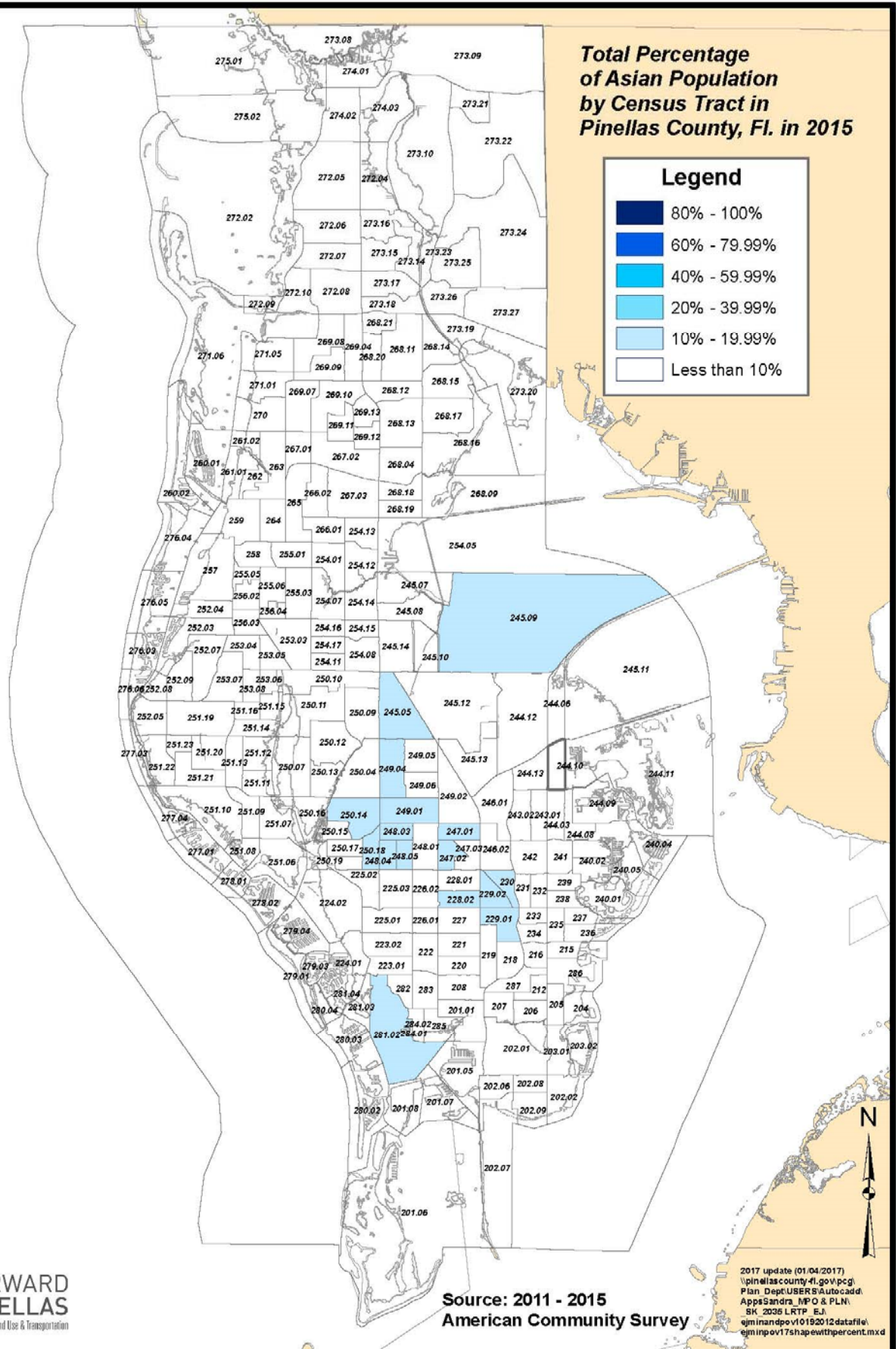
**Areas with High American Indian and Alaska Native Population**

The American Indian and Alaska Native population accounted for 0.3% (2,355) of the population in 2015 compared to .3% (2,892) in 2010. While this group is included in the total numbers for determining minority EJ areas, a separate analysis is not included due to the very small numbers of the population.

**Areas with High Native-Hawaiian or Other Pacific Islander Population**

Native-Hawaiian or Other Pacific Islanders accounted for about 0.1% of the total population of Pinellas County in 2015, or approximately 663 people. This is a decrease from 810 people identified in this group in 2010. Due to such small numbers and percentages, a separate analysis is not included for this population.

Figure 6



## Low-Income Population Analysis

Low-income population refers to a person whose household income is at or below the U.S. Department of Health and Human Services Poverty Guidelines. The guidelines are issued each year by the Department of Health and Human Services for administrative purposes, and are a simplified version of the Poverty Thresholds used by the U.S. Census. Poverty Thresholds are a measure of need, which do not vary geographically, and are adjusted by such factors as family size, and number of children less than 1 year of age, and for farm and non-farm residents. Table 4 demonstrates the poverty levels used by the US Census Bureau. Based on age, sex, family size or household role, and their income, individuals were classified below, at, or above the poverty level. This analysis considered only individuals below poverty level. Poverty statistics are used by federal agencies to assess the need or eligibility for various public assistance programs. The U.S. Census Bureau uses in its tables the population alone for whom poverty status is determined. Then adjustments are made for determination of poverty based on the criteria described above. The resulting population is reported by age group as below or above the poverty level.

**Table 4**  
**Poverty Thresholds for 2015 by Size of Family and Number of Related Children Under 18 Years**

Size of family unit	Weighted Average Thresholds	Related children under 18 years								
		None	One	Two	Three	Four	Five	Six	Seven	Eight or more
One person (unrelated individual).....	12,082									
Under 65 years.....	12,331	12,331								
65 years and over.....	11,367	11,367								
Two people.....	15,391									
Householder under 65 years.....	15,952	15,871	16,337							
Householder 65 years and over.....	14,342	14,326	16,275							
Three people.....	18,871	18,540	19,078	19,096						
Four people.....	24,257	24,447	24,847	24,036	24,120					
Five people.....	28,741	29,482	29,911	28,995	28,286	27,853				
Six people.....	32,542	33,909	34,044	33,342	32,670	31,670	31,078			
Seven people.....	36,998	39,017	39,260	38,421	37,835	36,745	35,473	34,077		
Eight people.....	41,029	43,637	44,023	43,230	42,536	41,551	40,300	38,999	38,668	
Nine people or more.....	49,177	52,493	52,747	52,046	51,457	50,490	49,159	47,956	47,658	45,822

Source: US Census Bureau

### ***Analysis of Level of Poverty***

The information for the low-income population group was retrieved from the 2011-2015 American Community Survey 5-Year Estimates for poverty status in the last twelve months. The analysis included people of all age groups. The per capita income data was included in the analysis to compare the relationship of the population in the census tract with the group below the poverty level being analyzed. The analysis also included an overview of the median income at the household level for the analysis group as a matter of reference.

The average low-income population by census tract in Pinellas County was 14.36% compared with a rate of about 10% in 1999 and 12.1% in 2010. Looking at poverty level from an age perspective, while the average census tract has a poverty level of about 14.36%, the average poverty level by census tract for those under 18 years of age is 22%, compared with 14.1% for those aged 18-65 and with 9.2% for those over 65 years of age.

***Areas with High Black or African American Population below the Poverty Level***

Approximately 10.48% (96,133) of the estimated Pinellas County population in 2015 were Black or African American. Poverty status was determined for 93,724 of this group in the 2011-2015 American Community Survey (ACS). Of the 93,724 in this group in Pinellas County for whom a poverty status determination was made, 28,395 (30%) were determined to be below the poverty level. The median household income for this group is \$30,695 while the median income for Pinellas County is \$45,819 countywide. Table 5 illustrates those census tracts with the highest concentrations of Black or African American population below the poverty level.

Table 5

Census Tracts with more than 50% of Black or African American Population below the Poverty Level in 2015					
Census Tract	Total Population for Whom Poverty Status has been Determined	Total Black or African American Population for Whom Poverty Status has been Determined	Total Black or African American Population Below the Poverty Level	Percentage of Black or African American Population Below the Poverty Level	Census Tract Per Capita Income (2015)
215	3,128	423	212	50.12%	\$63,559.00
216	2,061	787	520	66.07%	\$23,002.00
218	2,762	1,098	710	64.66%	\$19,304.00
225.01	4,836	201	103	51.24%	\$24,665.00
225.03	5,517	411	283	68.86%	\$31,031.00
226.01	3,186	153	118	77.12%	\$27,350.00
226.02	4,540	147	93	63.27%	\$26,869.00
230	2,493	69	61	88.41%	\$22,984.00
234	1,584	180	104	57.78%	\$20,349.00
235	3,276	523	318	60.80%	\$28,247.00
236	2,958	50	47	94.00%	\$37,920.00
241	4,497	429	310	72.26%	\$25,362.00
242	4,853	127	96	75.59%	\$25,022.00
244.03	3,679	212	128	60.38%	\$24,364.00
244.08	4,238	415	243	58.55%	\$28,615.00
245.07	3,465	114	62	54.39%	\$28,885.00
245.12	3,290	68	48	70.59%	\$25,487.00
246.01	3,557	83	44	53.01%	\$23,083.00
246.02	6,174	1,711	1341	78.38%	\$15,023.00
249.01	5,635	137	79	57.66%	\$24,264.00
249.04	3,702	140	74	52.86%	\$22,909.00
250.1	4,555	115	81	70.43%	\$29,800.00
250.12	5,520	82	60	73.17%	\$37,307.00
250.13	3,919	298	298	100.00%	\$25,680.00
250.16	1,878	86	64	74.42%	\$46,865.00
250.17	2,746	51	40	78.43%	\$19,383.00
250.19	2,175	87	45	51.72%	\$21,451.00
251.13	2,500	27	23	85.19%	\$28,726.00
251.15	3,341	169	138	81.66%	\$21,561.00
252.08	1,646	141	118	83.69%	\$41,381.00
245.08	6,491	320	209	65.31%	\$19,333.00
254.17	2,310	68	68	100.00%	\$25,208.00
258	4,071	1,074	635	59.12%	\$16,477.00
267.01	4,348	539	337	62.52%	\$22,610.00
268.13	3,983	4	4	100.00%	\$37,429.00
268.14	2,270	141	129	91.49%	\$24,043.00
268.16	5,511	306	173	56.54%	\$31,678.00

Census Tracts with more than 50% of Black or African American Population below the Poverty Level in 2015					
Census Tract	Total Population for Whom Poverty Status has been Determined	Total Black or African American Population for Whom Poverty Status has been Determined	Total Black or African American Population Below the Poverty Level	Percentage of Black or African American Population Below the Poverty Level	Census Tract Per Capita Income (2015)
268.18	3,936	622	335	53.86%	\$14,116.00
269.11	3,520	1	1	100.00%	\$30,918.00
272.06	6,644	34	34	100.00%	\$34,940.00
272.08	6,901	46	28	60.87%	\$36,107.00
272.09	1,124	11	7	63.64%	\$34,728.00
273.14	3,620	194	106	54.64%	\$29,964.00
273.12	1,547	15	15	100.00%	\$43,686.00
273.24	4,180	76	44	57.89%	\$45,114.00
273.27	4,371	185	159	85.95%	\$28,005.00
275.02	7,455	4	4	100.00%	\$30,007.00
280.04	2,105	12	12	100.00%	\$36,935.00
281.02	3,463	159	87	54.72%	\$54,951.00
282	2,472	87	44	50.57%	\$23,798.00

Source: US Census Bureau

**Areas with a High Hispanic or Latino Population below the Poverty Level**

In 2015, this group accounted for 8.7% (81,072) of the population in Pinellas County. Poverty status was determined for 79,802 of the total group. Of this, 18,071 (22.6%) Hispanic and Latino persons were determined to be under the poverty level. The median household income for this group is \$36,633, compared to \$45,819 countywide. Table 6 illustrates those census tracts with the highest concentrations of Hispanic or Latino population below the poverty level.

**Table 6**

<b>Census Tracts with more than 50% of Hispanic or Latino Population below the Poverty Level in 2015</b>					
Census Tract	Total Population for Whom Poverty Status has been Determined	Total Hispanic or Latino Population for Whom Poverty Status has been Determined	Total Hispanic or Latino Population Below the Poverty Level	Percentage of Hispanic or Latino Population Below the Poverty Level	Census Tract Per Capita Income (2015)
202.02	3,578	154	101	65.58%	\$20,530.00
215	3,128	111	61	54.95%	\$23,002.00
220	2,856	30	30	100.00%	\$23,226.00
245.14	4,502	955	503	52.67%	\$23,083.00
250.1	4,555	379	299	78.89%	\$33,161.00
253.03	4,592	460	236	51.30%	\$24,268.00
260.02	2,754	86	43	50.00%	\$25,644.00
259	4,808	817	653	79.93%	\$54,724.00
262	1,943	206	161	78.16%	\$17,068.00
265	6,944	947	615	64.94%	\$28,222.00
268.16	5,511	530	330	62.26%	\$35,976.00
269.12	3,722	504	344	68.25%	\$23,063.00

Source: US Census Bureau

**Areas with High Asian Population below the Poverty Level**

Asian Americans accounted for 3.2% (29,338) of the population in 2015, and the poverty status was determined for 29,359 people in this group. It was determined that 3,427 Asian Americans were living below the poverty level, or just under 12% of the group. The median household income for this group in 2010 was \$49,397 and \$57,230 in 2015 compared with \$45,819 countywide. Table 7 illustrates those census tracts with the highest concentrations of Asian population below the poverty level.

**Table 7**

<b>Census Tracts with more than 50% of Asian Population below the Poverty Level in <del>2010</del> 2015</b>					
Census Tract	Total Population for Whom Poverty Status has been Determined	Total Asian Population for Whom Poverty Status has been Determined	Total Asian Population Below the Poverty Level	Percentage of Asian Population Below the Poverty Level	Census Tract Per Capita Income (2010)
201.08	2,287	36	25	69%	\$27,249.00
202.07	2,541	9	9	100%	\$21,026.00
203.02	3,831	54	29	54%	\$32,653.00
216	2,061	30	24	80%	\$19,304.00
227	4,185	322	200	62%	\$20,579.00
234	1,584	19	15	79%	\$28,247.00
250.15	2,812	55	31	56%	\$46,865.00
251.08	2,133	55	49	89%	\$24,072.00
251.1	5,616	60	46	77%	\$32,123.00
253.08	2,125	21	21	100%	\$34,559.00
254.05	3,742	121	105	87%	\$49,481.00
259	4,808	160	102	64%	\$54,724.00
267.02	6,813	441	245	56%	\$25,350.00
268.09	2,806	81	60	74%	\$41,388.00
269.07	5,995	71	60	85%	\$39,271.00
273.17	5,255	46	46	100%	\$28,467.00
273.23	2,940	32	32	100%	\$45,114.00
279.01	2,323	69	36	52%	\$58,964.00
282	2,472	39	23	59%	\$23,628.00
285	2,113	25	17	68%	\$40,542.00
287	2,963	94	94	100%	\$17,690.00

Source: US Census Bureau

**Areas with High American Indian and Alaska Native Population below the Poverty Level**

The American Indian and Alaska Native population accounted for 0.3% (2,892) of the population in 2010. The percentage remained the same in 2015, but the estimated number decreased to 2,555. Poverty status was determined for 2,539 in this group, with 438, or 17%, determined to be below the poverty level. The median income for this group countywide was \$43,138, compared to \$45,819 for all persons countywide. While this group is included in the total numbers for determining low-income EJ areas, a separate analysis is not included due to the very small numbers of the population.

***Areas with High Native-Hawaiian or Other Pacific Islander Population below the Poverty Level***

Native-Hawaiian or Other Pacific Islanders account for about 0.1% of the total population of Pinellas County in 2010, or 810 people compared to approximately 931 people in 2015. Poverty status was determined for 702 people in this group, finding that 129, or 18.4%, of the group is below the poverty level. The median income for this group is \$44,410, compared to \$45,819 countywide. While this group is included in the total numbers for determining low-income EJ areas, a separate analysis is not included due to the very small numbers of the population.

**Areas with High White Alone Population below the Poverty Level**

Pinellas County is 84.9% White, with a total population of 769,793, according to the 2015 American Community Survey (ACS). Poverty status was determined for 758,304 people in this group. Of this group, 91,943 people were determined to be below the poverty level, approximately 12% of the White population. The median income for this group was \$47,546, compared to \$45,819 countywide. Table 8 illustrates those census tracts where more than 25% of the white population is below the poverty level.

**Table 8**

<b>Census Tracts with more than 25% of White Population below the Poverty Level in 2015</b>					
Census Tract	Total Population for Whom Poverty Status has been Determined	Total White Population for Whom Poverty Status has been Determined	Total White Population Below the Poverty Level	Percentage of White Population Below the Poverty Level	Census Tract Per Capita Income (2015)
202.06	1179	1216	330	27%	\$33,067.00
205	363	409	176	43%	\$17,444.00
206	251	257	88	34%	\$15,767.00
212	224	305	160	52%	\$63,559.00
216	1178	1183	404	34%	\$19,304.00
220	644	644	197	31%	\$23,226.00
224.02	5420	5420	1351	25%	\$24,665.00
234	1239	1355	363	27%	\$28,247.00
245.14	3639	3648	1057	29%	\$23,083.00
246.02	3940	3973	1226	31%	\$14,925.00
247.01	2758	2764	807	29%	\$20,575.00
247.02	1651	1651	503	30%	\$17,416.00
247.03	2104	2122	570	27%	\$22,804.00
249.02	4956	5140	1579	31%	\$22,909.00
250.18	1705	1979	540	27%	\$21,451.00
254.08	5692	5713	1464	26%	\$18,490.00
254.11	1685	1685	445	26%	\$31,267.00
255.05	1850	1949	654	34%	\$20,410.00
256.02	2581	2581	714	28%	\$28,104.00
259	3937	4016	1110	28%	\$54,724.00
261.01	1500	1500	481	32%	\$30,005.00
262	309	309	228	74%	\$17,068.00
263	4622	4622	1364	30%	\$17,939.00
285	1779	1787	468	26%	\$40,542.00

Source: US Census Bureau

## Summary Analysis

Table 9 below, illustrates the poverty status and median income for each population group as a whole, countywide.

**Table 9**

<b>Summary Data Analysis for Pinellas County, FL in 2015</b>				
Population Group	Total Population for Whom Poverty Status has been Determined	Population Below Poverty Level	Percent of Population Below Poverty Level	Median Income for Population or Group
Black or African American	93,724	28,395	30%	\$30,695
Hispanic or Latino	79,802	18,071	22.64%	\$36,633
Asian	29,359	3,427	11.67%	\$57,230
American Indian and Native Alaskan	2,539	438	16.78%	\$43,138
Native Hawaiian or Other Pacific Islander	702	129	18.40%	\$44,410
White Alone	758,304	91,943	12.12%	\$47,546

Source: US Census Bureau

## AGE ANALYSIS

As previously stated, the median age in Pinellas County continued to increase from 43.6 in 2000 to 46.3 in 2010 and 47.1 in 2015. Due to the increasing median age of residents in Pinellas County, a separate analysis for age is included in this document. Table 10 displays those census tracts where the median age of the residents exceeds 65. Figure 7 illustrates the geographical distribution of the median age by census tract throughout the county. This analysis can help identify those areas where a large segment of the population may face mobility challenges and could benefit from additional consideration during the transportation planning process.

**Table 10**

<b>Census Tracts in Pinellas County Florida Where Median Age Exceeds 65</b>	
Census Tract	Median Age
201.08	65.9
243.13	70
250.15	71.5
251.11	75.4
254.17	68.1
273.15	68.3
276.04	70.1
281.04	74.9
284.01	71.2

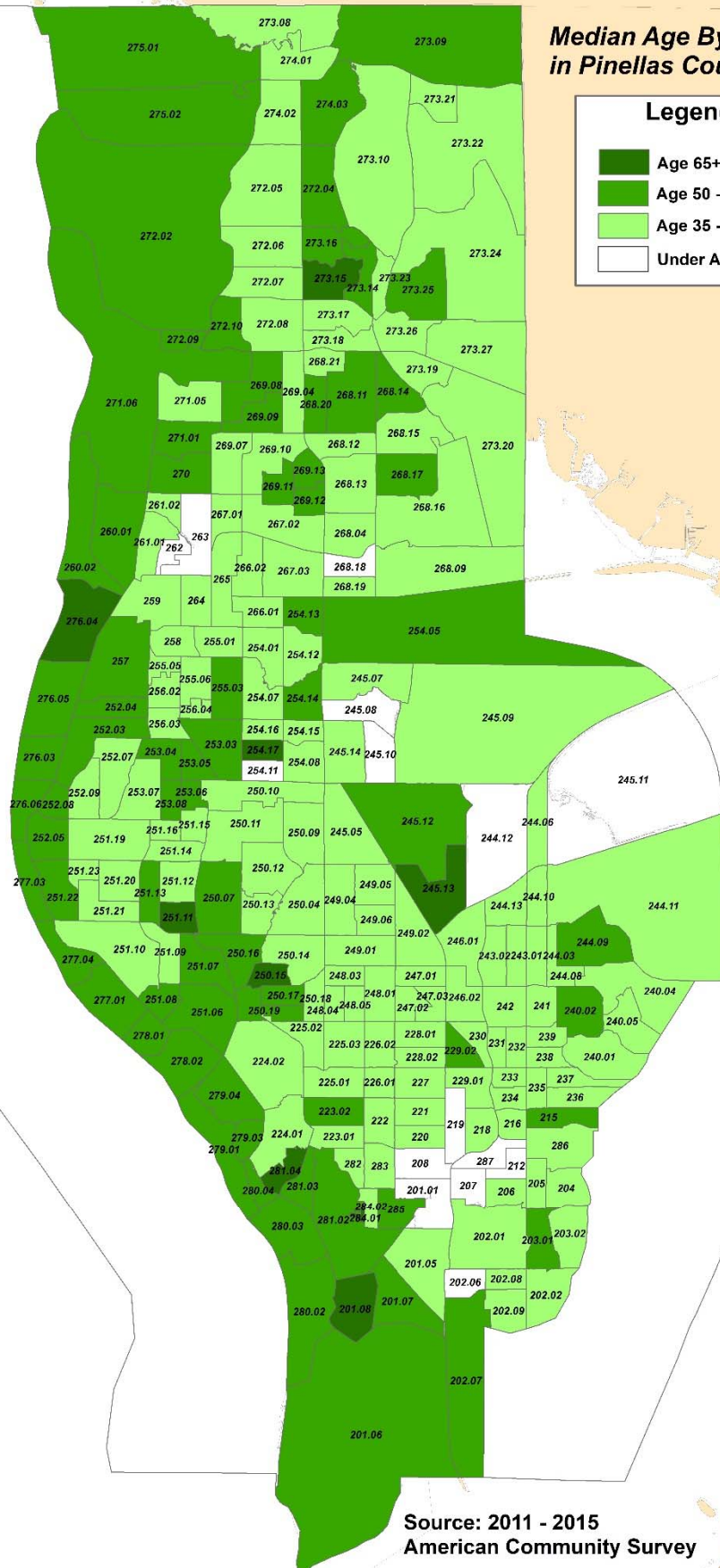
Source: US Census Bureau

Figure 7

# **Median Age By Census Tract in Pinellas County, FL. in 2015**

## **Legend**

- Age 65+
- Age 50 - Under Age 65
- Age 35 - Under Age 50
- Under Age 35



06/21/2018  
median age

2017 update (05/16/2018)  
\\pinellascounty-fl.gov\pcgi  
Plan\_Dept\USERS\Autocadd\  
Apps\Sandra\_MPO & PLN\\_  
\_SK\_2035 LRTP\_EJ\  
ejminandpov10192012\datafile\  
ejminpov17shapewithpercent.mxd

**Source: 2011 - 2015  
American Community Survey**