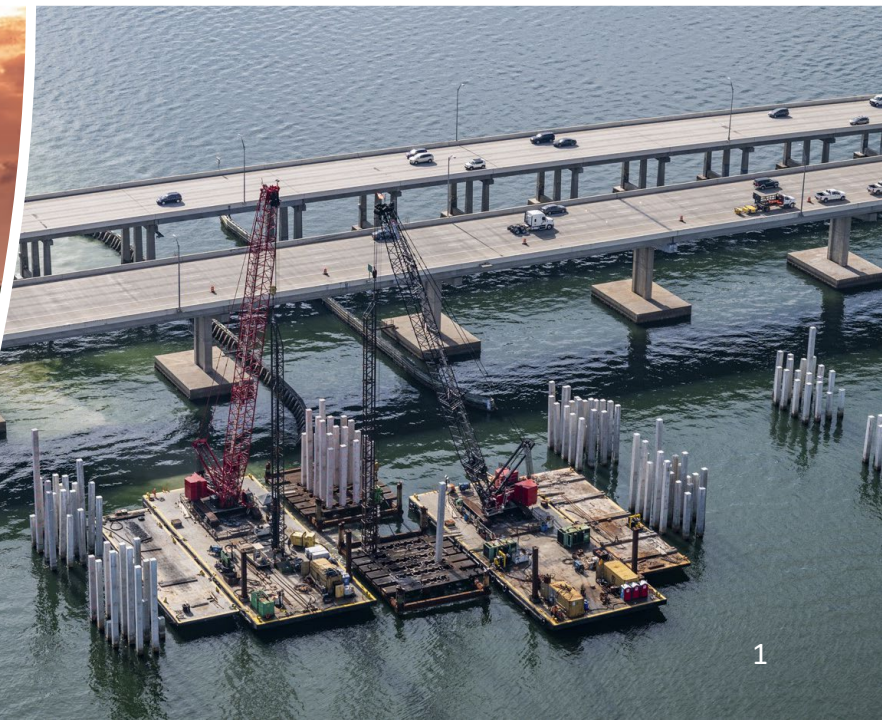


Advantage Pinellas 2050



Forward Pinellas Board
Work Session

February 14, 2024



Advantage Pinellas



**Advantage
PINELLAS**

ENGAGE. ADAPT. CONNECT.

- The MPO Long Range Transportation Plan (LRTP)
- Strategic plan to improve mobility and economic opportunity countywide
- Defines major transportation needs and enables our communities to receive critical future funding
- Developed every 5 years to account for changing demographic, policy and mobility needs
- Ties together land use, transportation & housing



Transportation projects must be included in the plan to be eligible for state or federal funding.



Advantage Pinellas Development Timeline



Spring 2023

Population & Employment Projections

Summer/Fall 2023

Identify Local and Regional Needs

Winter 2023/2024

Project Revenues

Spring/Summer 2024

Balance Project Costs & Revenues and Define Policies

Fall 2024

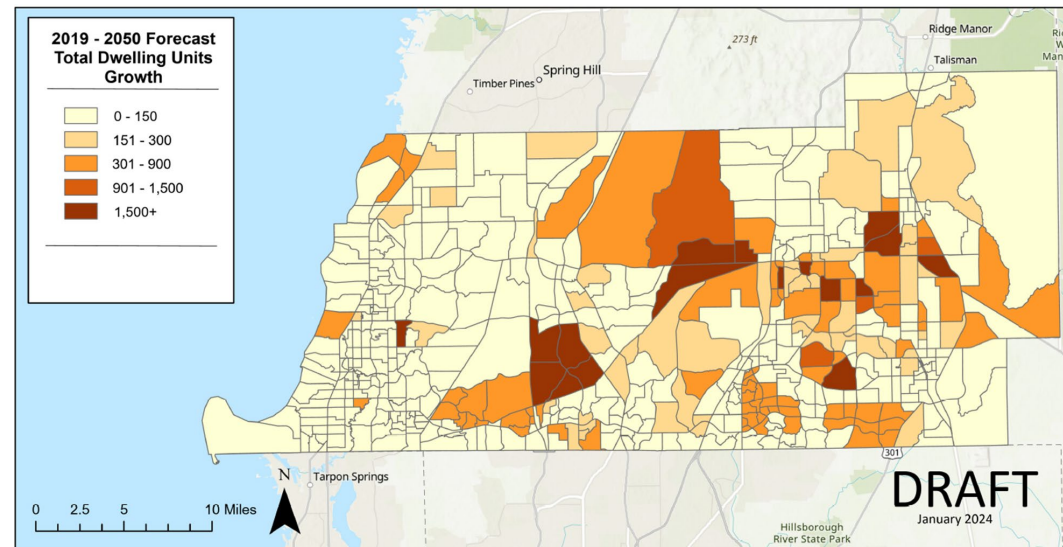
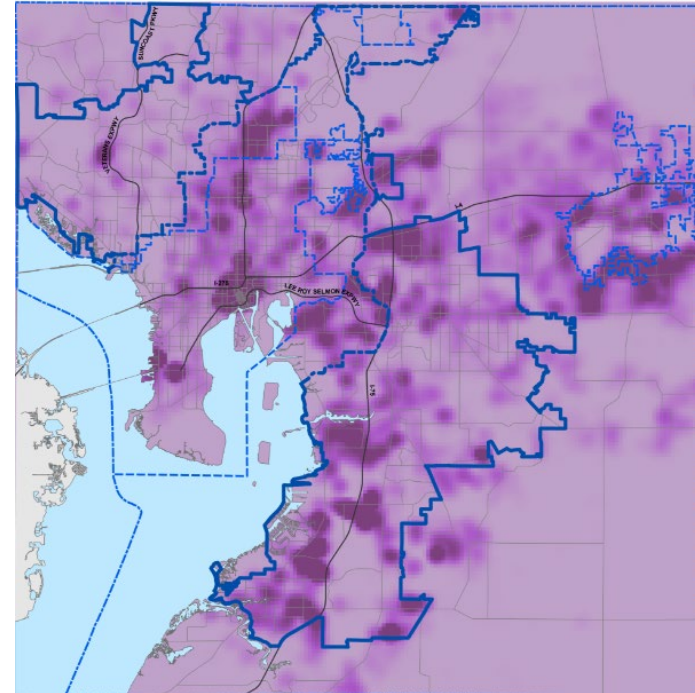
Adopt Plan





Regional Growth to 2050

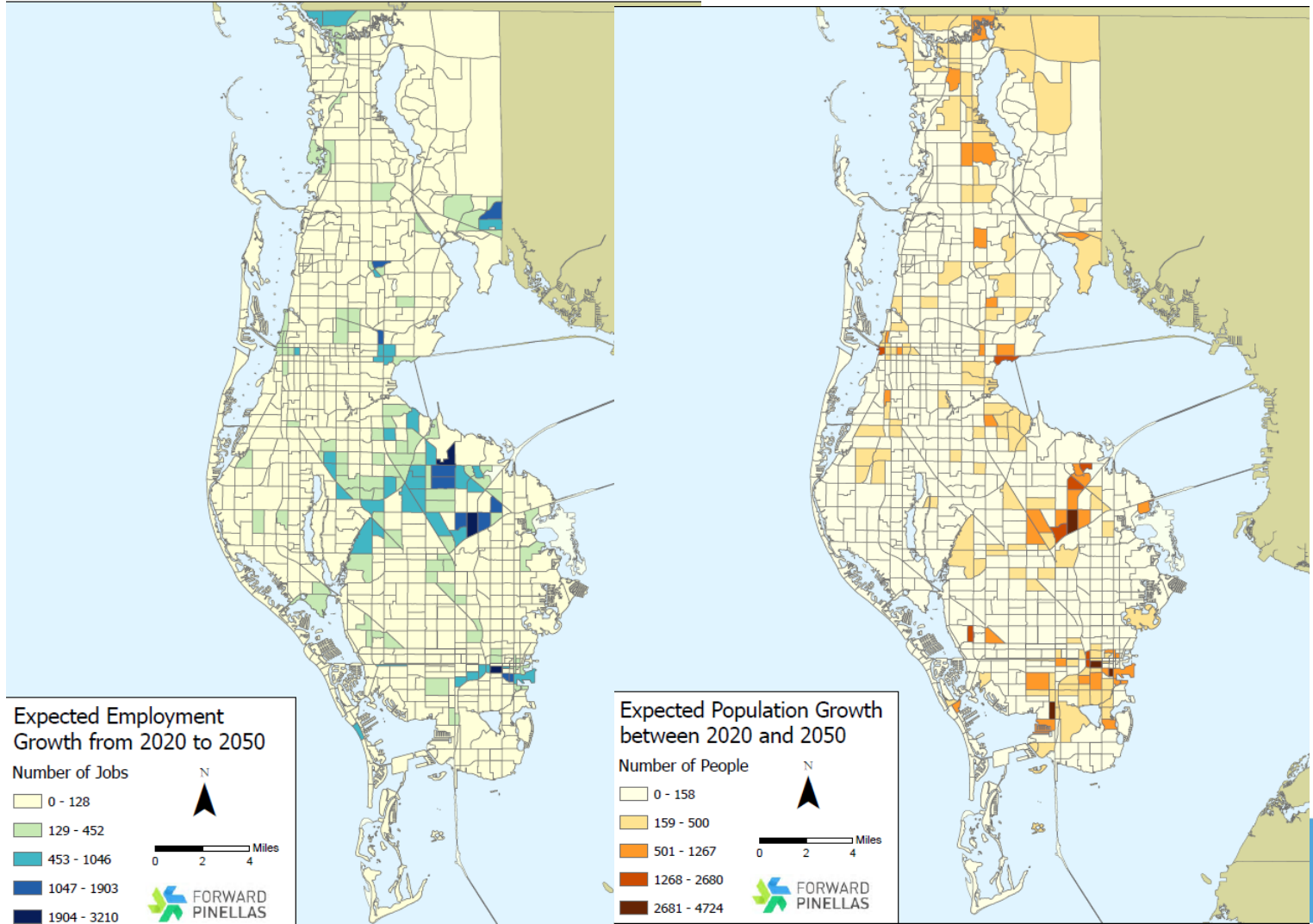
- › Hillsborough
 - › 540K additional population
 - › 430K additional jobs
- › Pasco
 - › 450K additional population
 - › 240K additional jobs
- › By 2050:
 - › Approx 4 million residents
 - › + tourists (40 million in 2023)



Planning for the Future

- › Population Growth:
 - › 120K
- › Employment Growth:
 - › 90K
- › Concentrated in Activity Centers and along corridors
- › >15M annual visitors

2050 Population: 1,078,720 +10% 120K
 2050 Employment: 680,688 +12% 90K

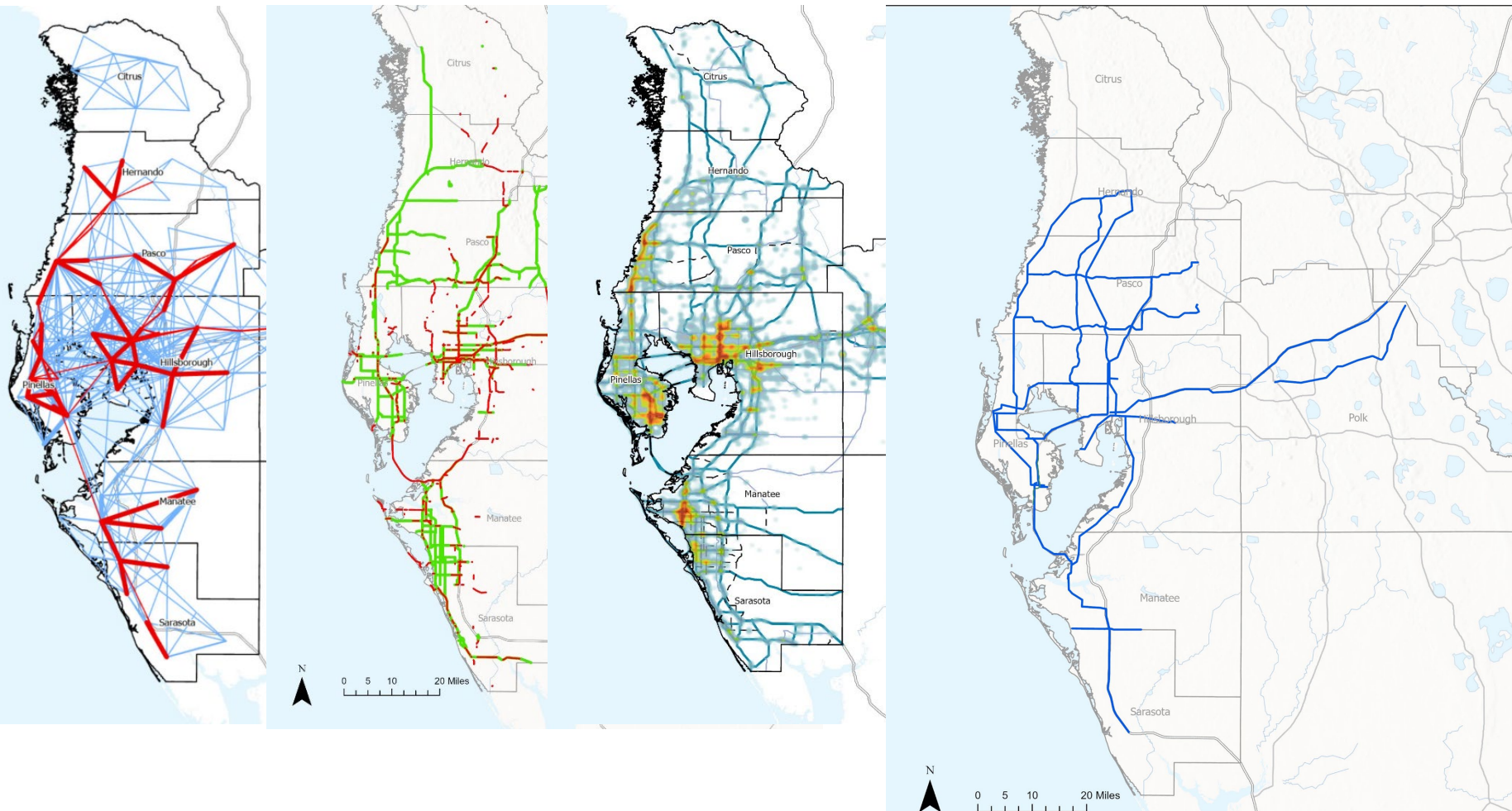


Regional Travel Patterns

- › Pinellas to Hillsborough
 - › 2002: 58,736 (15%)
 - › 2021: 68,064 (16.2%)
- › Hillsborough to Pinellas
 - › 2002: 43,746 (8.8%)
 - › 2021: 64,358 (10%)
- › Pasco to Pinellas
 - › 2002: 29,636 (20.9%)
 - › 2021: 34,636 (15.5%)
- › Manatee to Pinellas
 - › 2002: 6,269 (6.0%)
 - › 2021: 12,250 (7.5%)



Regional Needs Assessment



- › Regional Travel Demand
- › Congestion
- › Safety
- › Corridors that are most critical for regional travel

What we are hearing

- › People want *options* in how they get around
 - › The ability to safely walk and bike is very important
- › Having a variety of land uses within a 10 minute walk is the *most ideal* neighborhood for more than 70% of respondents
- › 20% would never take transit, but nearly 50% would if it would get them around more quickly
- › Biking, pedestrian and safety investments are highly supported by residents
 - › Roadway maintenance and premium transit closely behind
 - › Transit most supported if 'premium' or regional in nature
- › Strong support for roadways to have safe spaces for *ALL* users
 - › More than 70% would support lower speeds for safe streets



Goals for our communities

- Attractive and Unique Destinations
- Resilient Places
- Safe and Healthy Communities
- Economic Opportunity for all
- A regional transportation system that is safe and accessible for everyone

Invest in transportation projects that advance those goals

ADVANTAGES OF LIVING AND WORKING IN PINELLAS COUNTY

In developing your Advantage Pinellas Plan, we considered the major advantages and opportunities of planning for your mobility.

A woman in athletic wear is jogging on a paved path that curves through a lush green park. In the background, a large, multi-story building with a prominent chimney and several dormer windows is visible. The scene is set under a clear blue sky. The text 'FOSTER HEALTHY COMMUNITIES' is overlaid in large, bold, white letters at the bottom of the image.

**FOSTER
HEALTHY
COMMUNITIES**

How we meet our needs and goals

- Connectivity
- Roadway efficiency
- Technology
- Active Transportation
- Transit service



Roadway Efficiency and Capacity

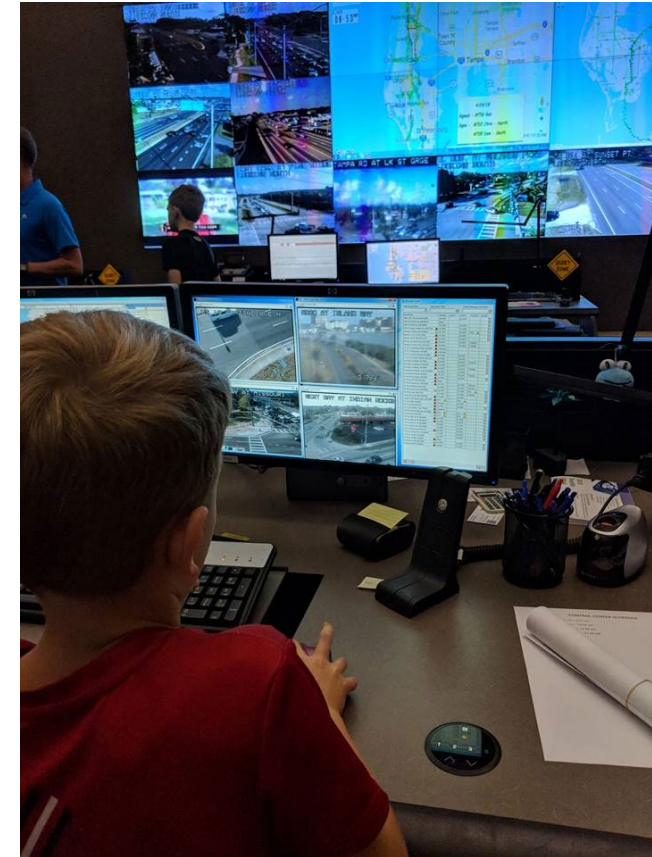
- US 19
 - Interchanges vs viaduct
- I-275
 - Express lanes and lane continuity
- Key local connections
 - 126th Ave
 - 142nd Ave
 - Halkey Roberts/102nd





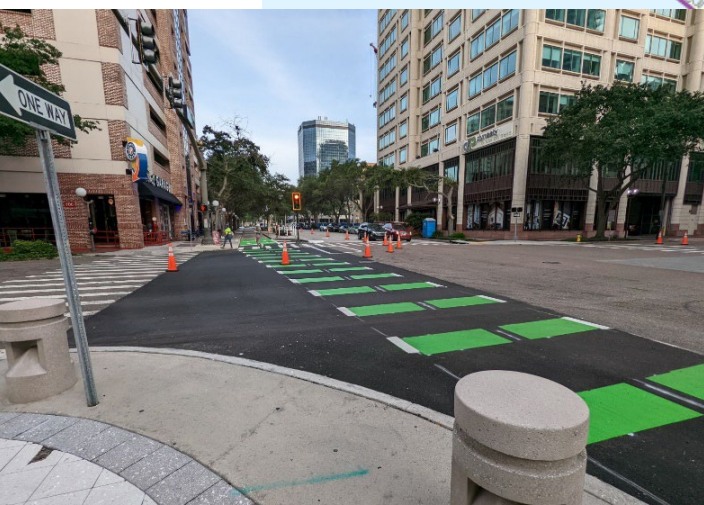
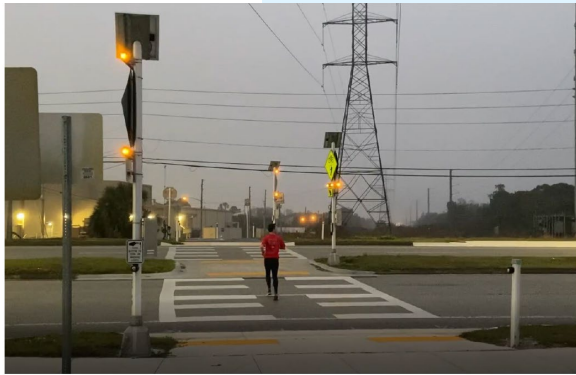
Investments in Technology

- › ITS/ATMS
- › Detection improvements
 - › For all modes of travel
- › Advance notification equipment
- › Identify opportunities to expand funding support to local partners



Active Transportation

- Dedicated spaces to improve safety
 - No one-size-fits all
- More than 75% of fatalities are vulnerable users
- Cost considerations
 - Bike/pedestrian overpasses in 2023: \$9 M
 - Bike/pedestrian crossings in 2023: \$1.5M



Transit

Connecting major destinations and attractions

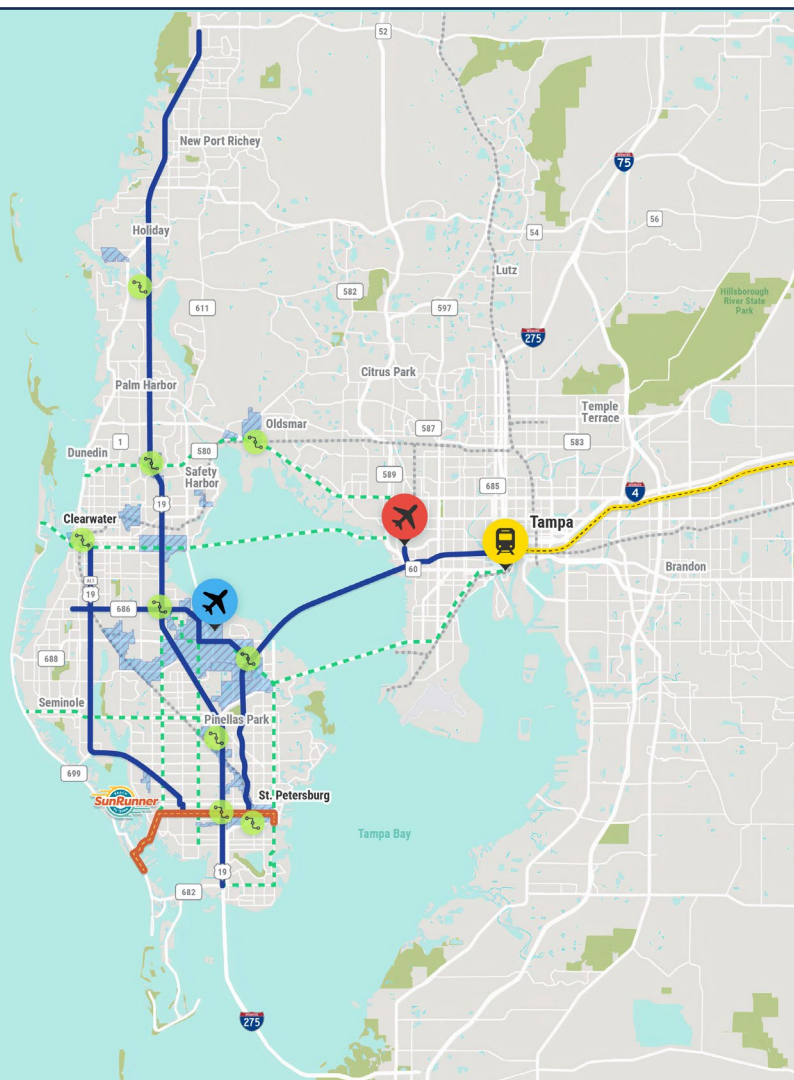
Connections to employment centers

Providing options for tourists





TARGET EMPLOYMENT CENTERS



LEGEND

- Tampa International Airport (TPA)
- St. Pete-Clearwater International Airport (PIE)
- Brightline Station
- Brightline Route
- Intermodal Centers
- Target Employment Centers
- CSX Line

TRANSIT CORRIDORS

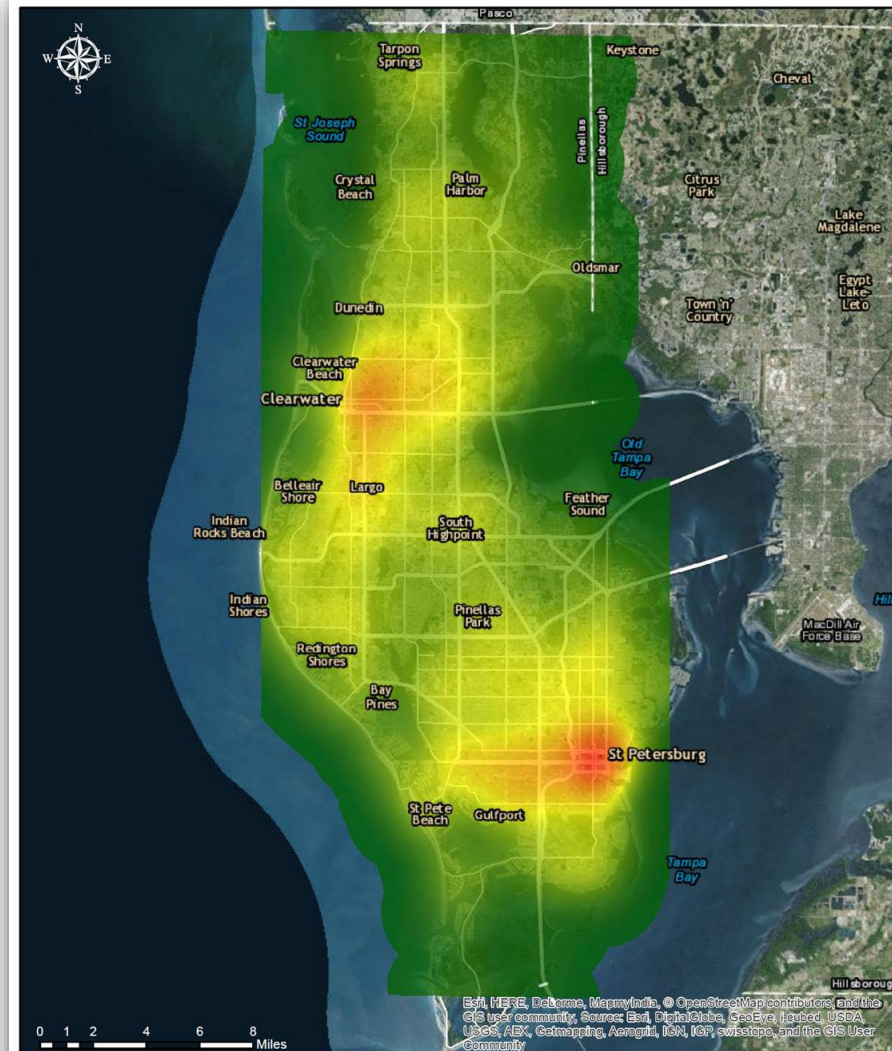
- SunRunner
- Priority
- Secondary Services

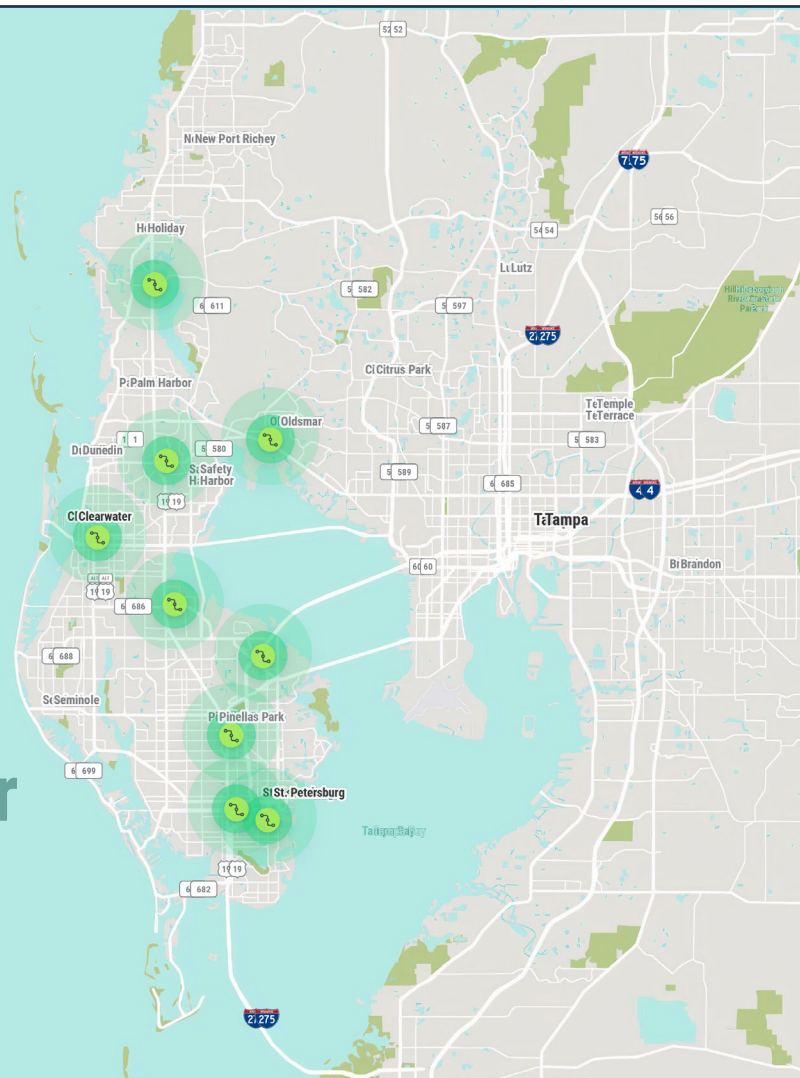




2016 Bike Share Feasibility Study

- Employment density
- Population density
- Attractions
- Higher education
- Bicycle mode share
- Transit stop density
- Existing bicycle infrastructure
- Minority/low-income communities





Opportunities for
micromobility

LEGEND

- Tampa International Airport (TPA)
- St. Pete-Clearwater International Airport (PIE)
- Brightline Station
- Brightline Route
- Intermodal Centers
- Target Employment Centers
- CSX Line

TRANSIT CORRIDORS

- SunRunner
- Priority
- Secondary Services

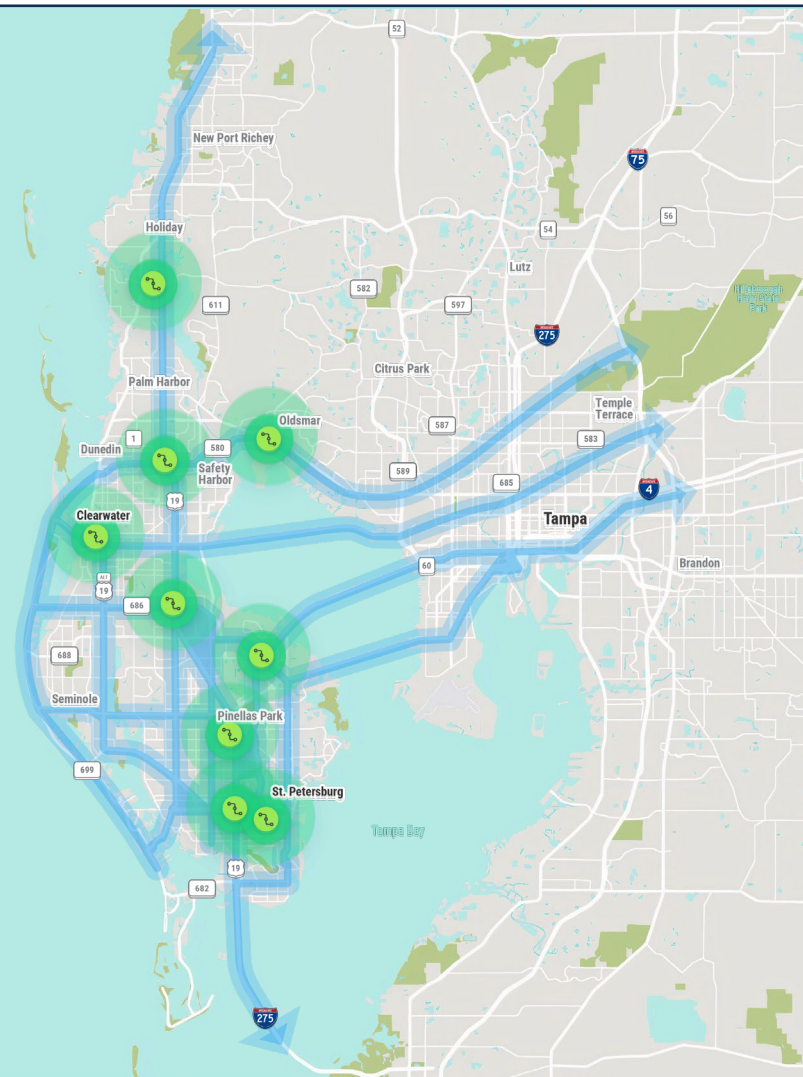


ADVANTAGE PINELLAS



**Advantage
PINELLAS**

ENGAGE. ADAPT. CONNECT.



LEGEND

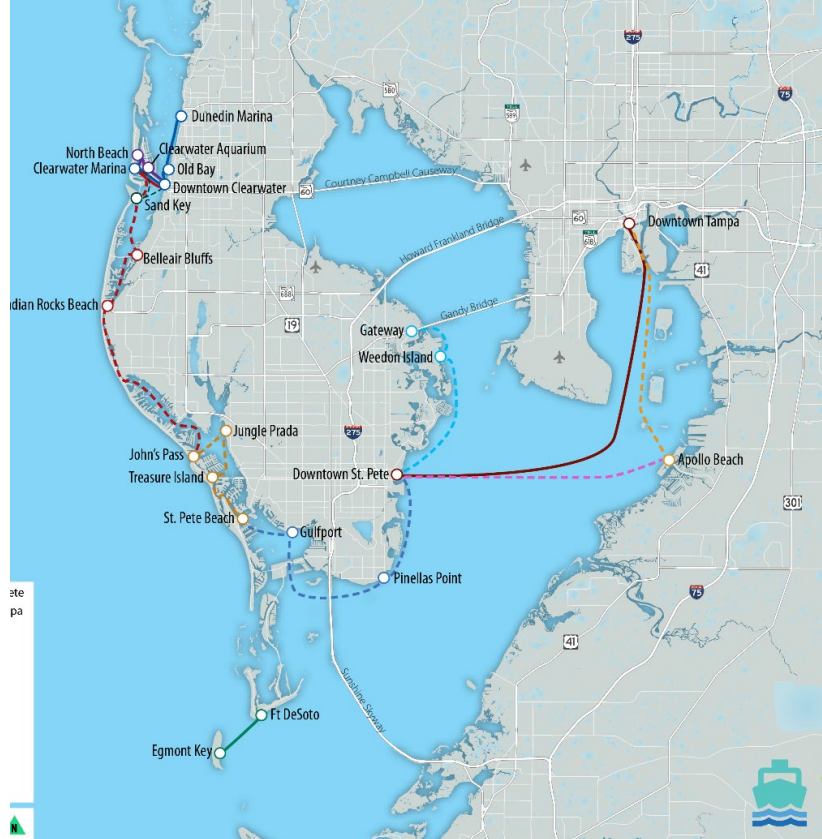
- Tampa International Airport (TPA)
- St. Pete-Clearwater International Airport (PIE)
- Brightline Station
- Brightline Route
- Intermodal Centers
- Target Employment Centers
- CSX Line

TRANSIT CORRIDORS

- SunRunner
- Priority
- Secondary Services

MAJOR REGIONAL CONNECTIONS



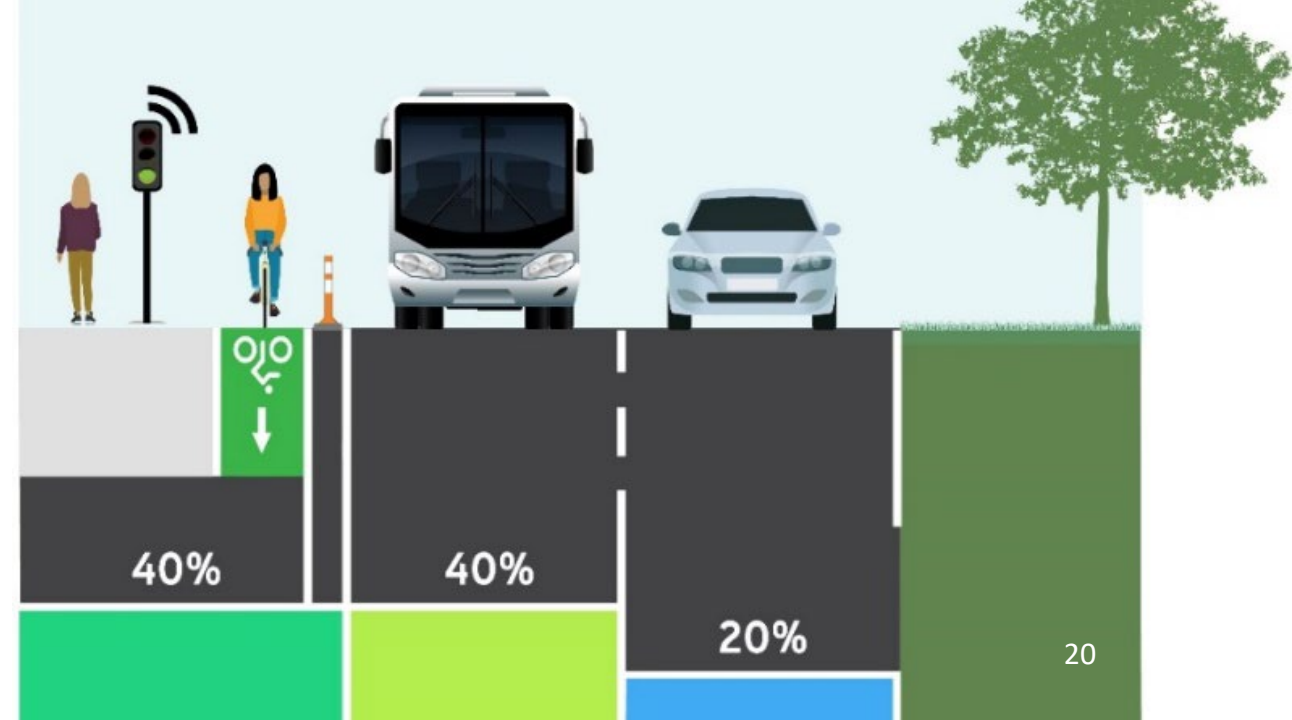


Waterborne Services

- Connecting major destinations and attractions
- Focus on providing options for tourists and residents

Up Next:

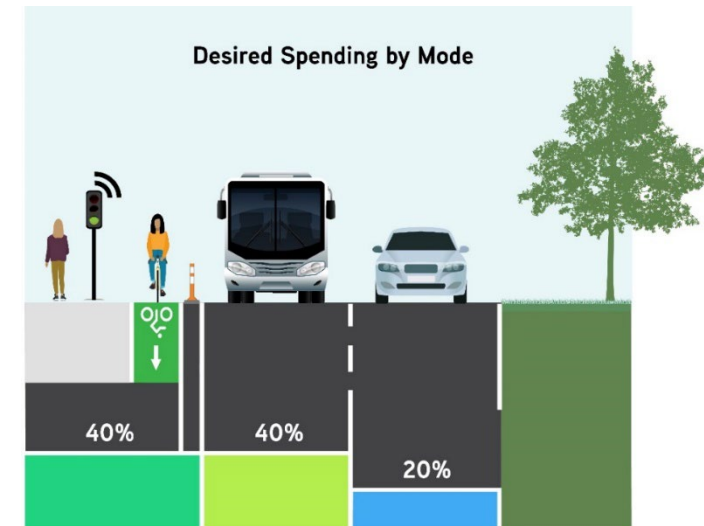
- Projections of Financial Resources
- Identification of projects with support for funding
- Aligning Revenues with Project Priorities



Exercise: How would you prioritize funding for transportation?

Refer to the paper being handed out.

Rank each mode of transportation based on how you believe they should be prioritized for funding.



Questions?

Chelsea Favero, AICP
cfavero@forwardpinellas.org



FORWARD
PINELLAS
Integrating Land Use & Transportation