

# Major Regional Priorities

Chelsea Favero, AICP  
Forward Pinellas

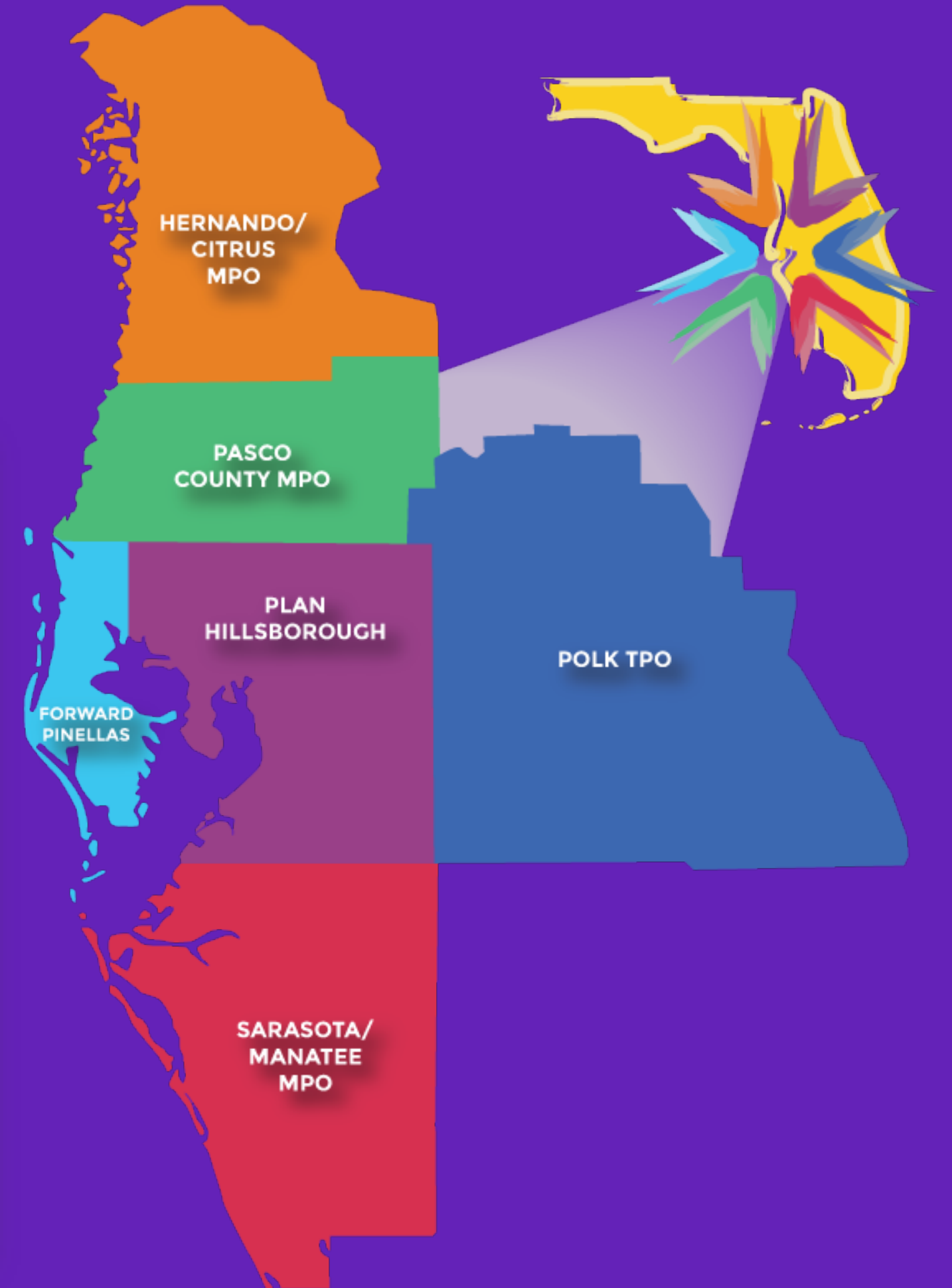
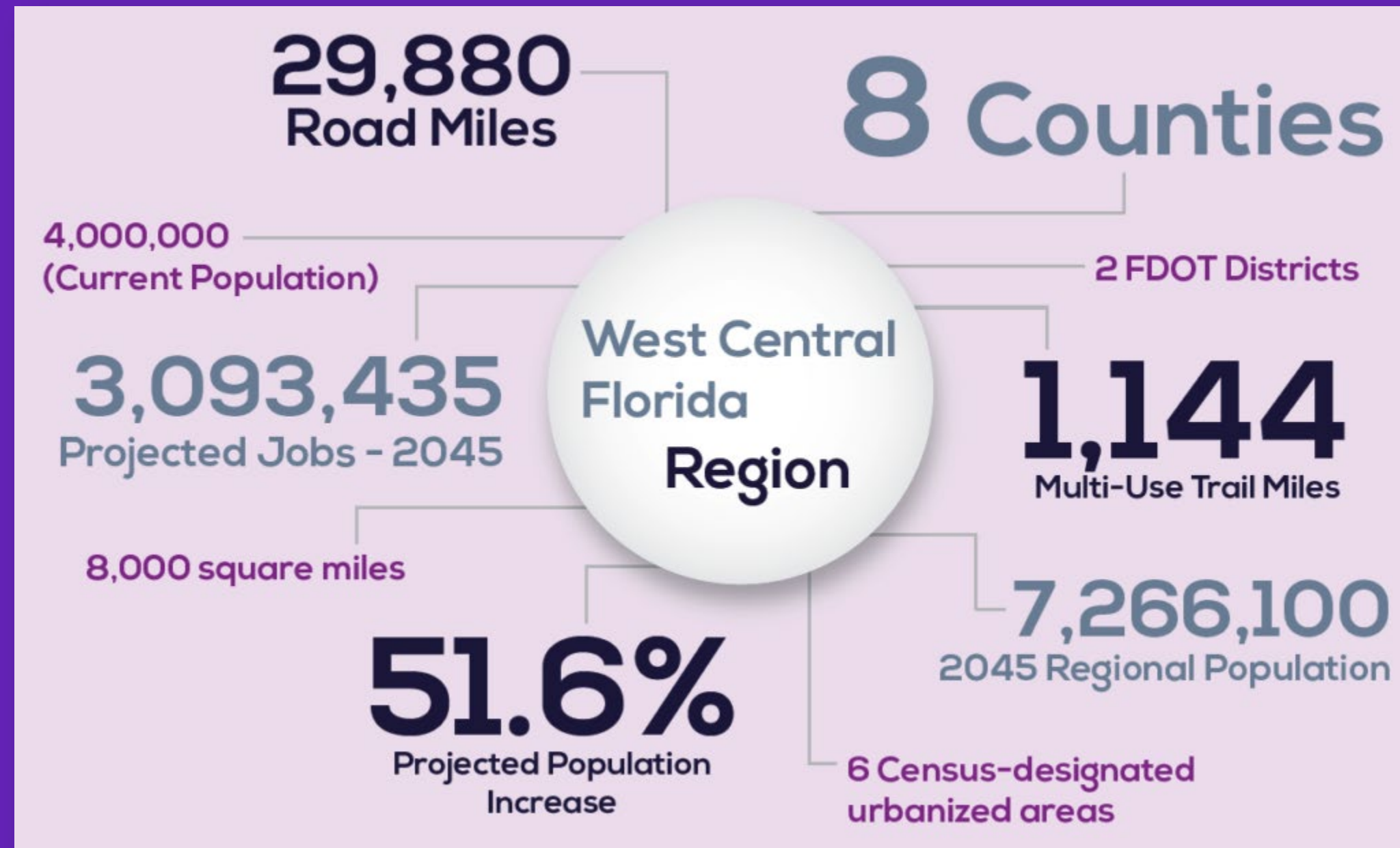


**SCTPA**  
Sun Coast Transportation Planning Alliance

ONE REGION, ONE VOICE

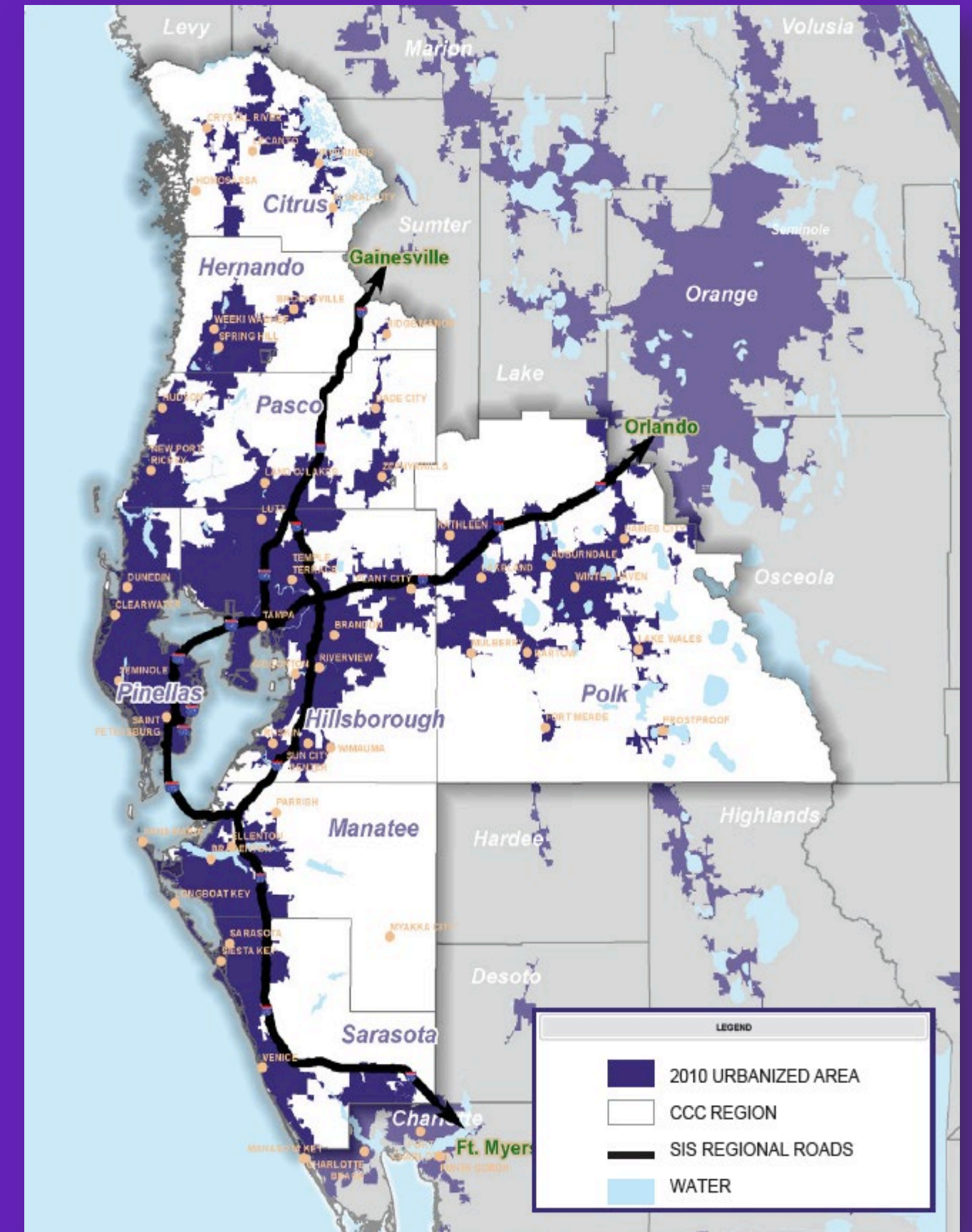
# Who We Are

Transportation doesn't stop at county lines.  
We're speaking as one voice for the region.



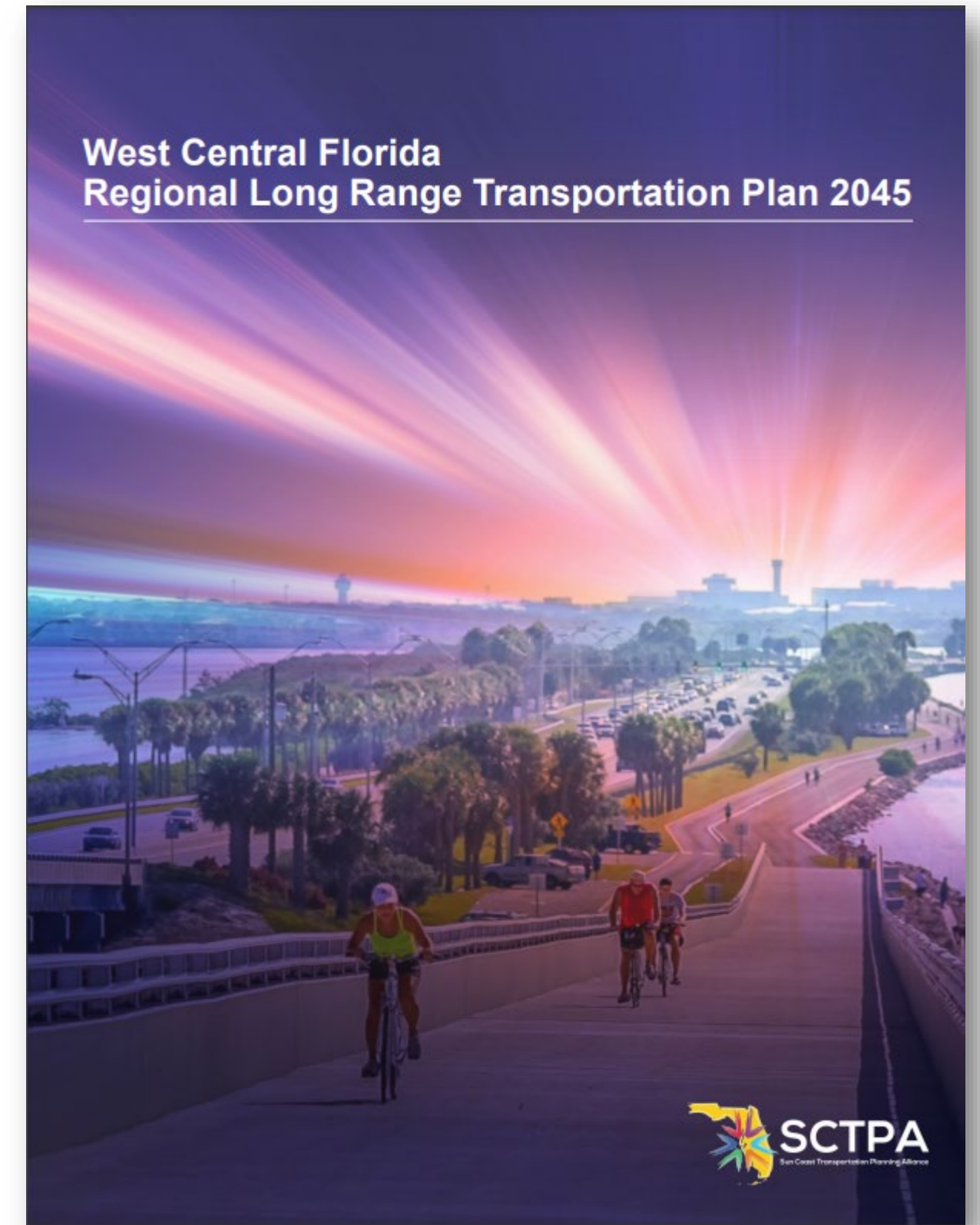
# Planning For Tomorrow

- Tampa Bay is one of the top 20 most populated regions in the country and one of the fastest-growing.
- Regional coordination of plans and priorities is essential for an integrated, multimodal regional network
- MPOs and TPOs plan, prioritize and fund the improvements that will shape our shared future



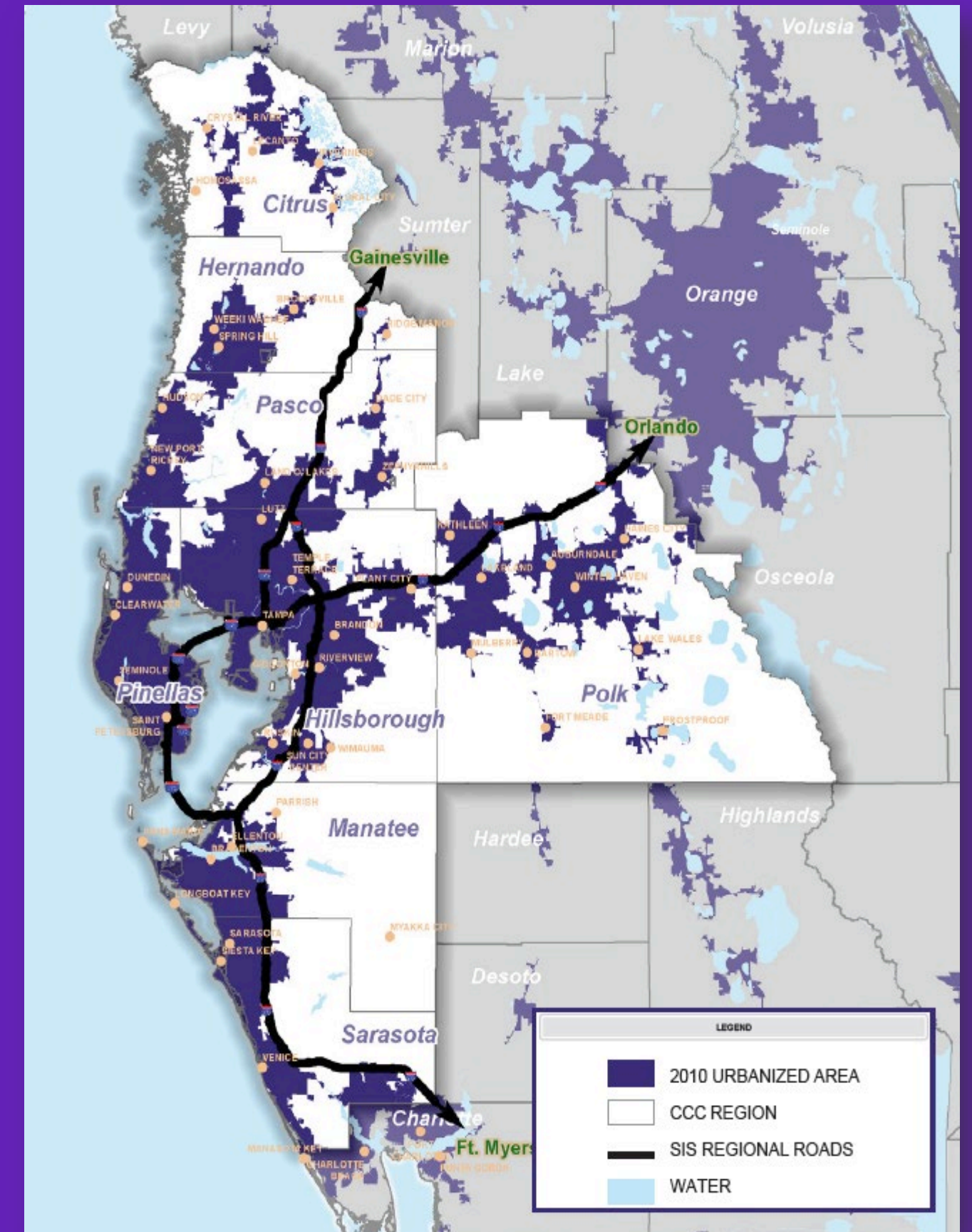
# Regional Priorities

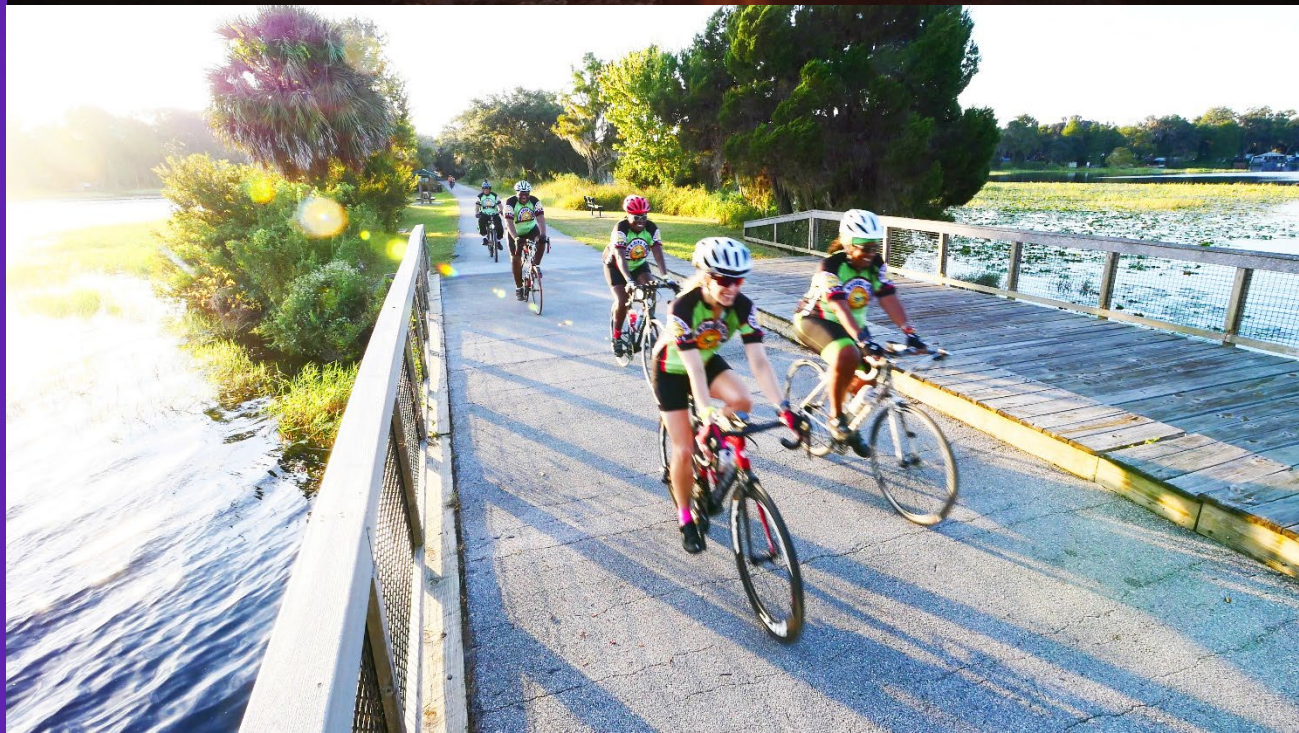
- Develop annually
- Major projects that advance the RL RTP
- Projects funded because of our collective support:
  - Gateway Expressway
  - Westshore Interchange (Phases 1 and 2)
  - SunRunner Bus Rapid Transit
  - I-275 Safety and Operational Improvements at Downtown/I-4 Interchange
  - Central Polk Parkway Segment 1
  - CR 557 from US 17/92 to I-4



# Unfunded Priorities

- I-75 Interchange at Gibsonton
- I-275 Express Lanes from I-375 to Gandy Blvd (pending TIP amendment)
- Regional Rapid Transit in the I-275 Corridor
- SR 54/US 41 Intersection
- I-275/SR 60 Interchange (Phase 3)
- US 41 from SR 44 to SR 200
- Desoto Bridge Replacement
- Bradenton-Palmetto Connector
- I-4 and the SR 33 Interchange (Exit 38) (new)
- Downtown Lakeland Intermodal Transit Center (new)
- Replacement of HART's Heavy Maintenance Facility (new)
- Regional passenger rail transit connection between Tampa and Orlando (new)





# Next Steps

- Endorsement by each MPO/TPO
- Transmit priorities to FDOT through TIP



**SCTPA**  
Sun Coast Transportation Planning Alliance

# SunCoastTPA.org

@SunCoastTPA

