

# Forward Pinellas Multimodal Accessibility Index (MAX Index) July 2023 Update



# Current Transportation Standards

Adopted Roadway Level of Service (LOS)  
Standard: The amendment area is located near a roadway segment where the existing Level of Service is operating at a **LOS “D” or better**, therefore those policies are not applicable.

# Current Transportation Standards

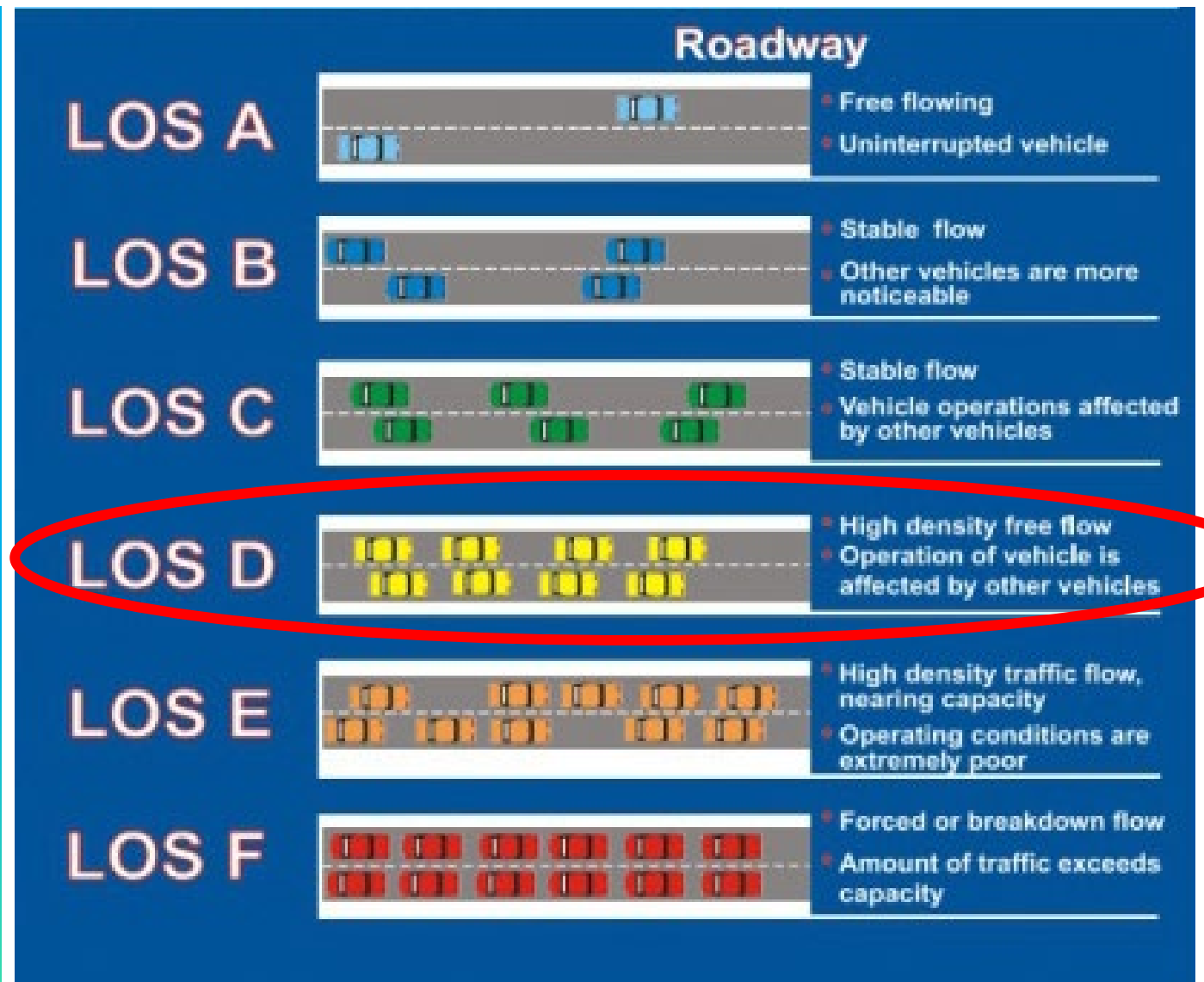
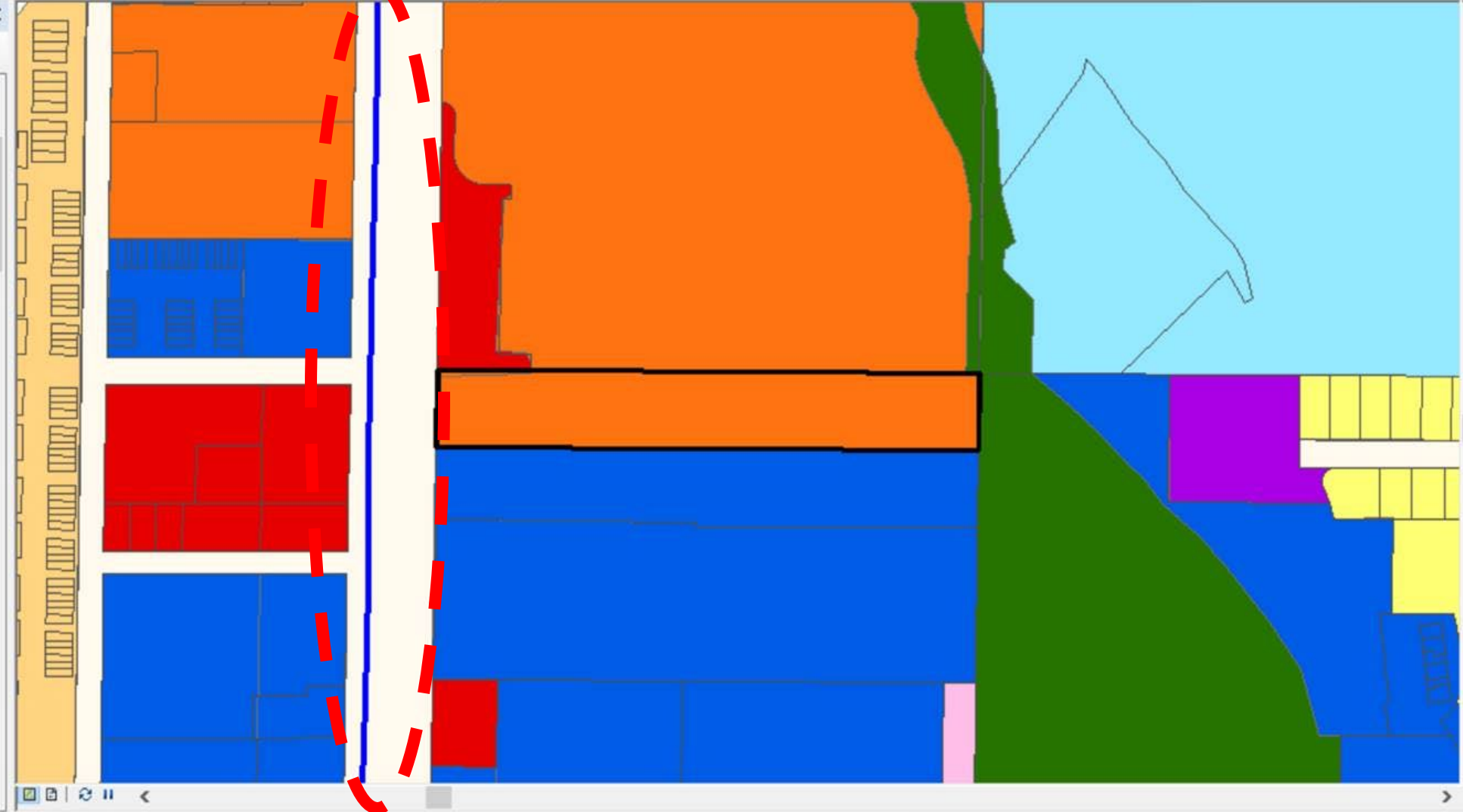






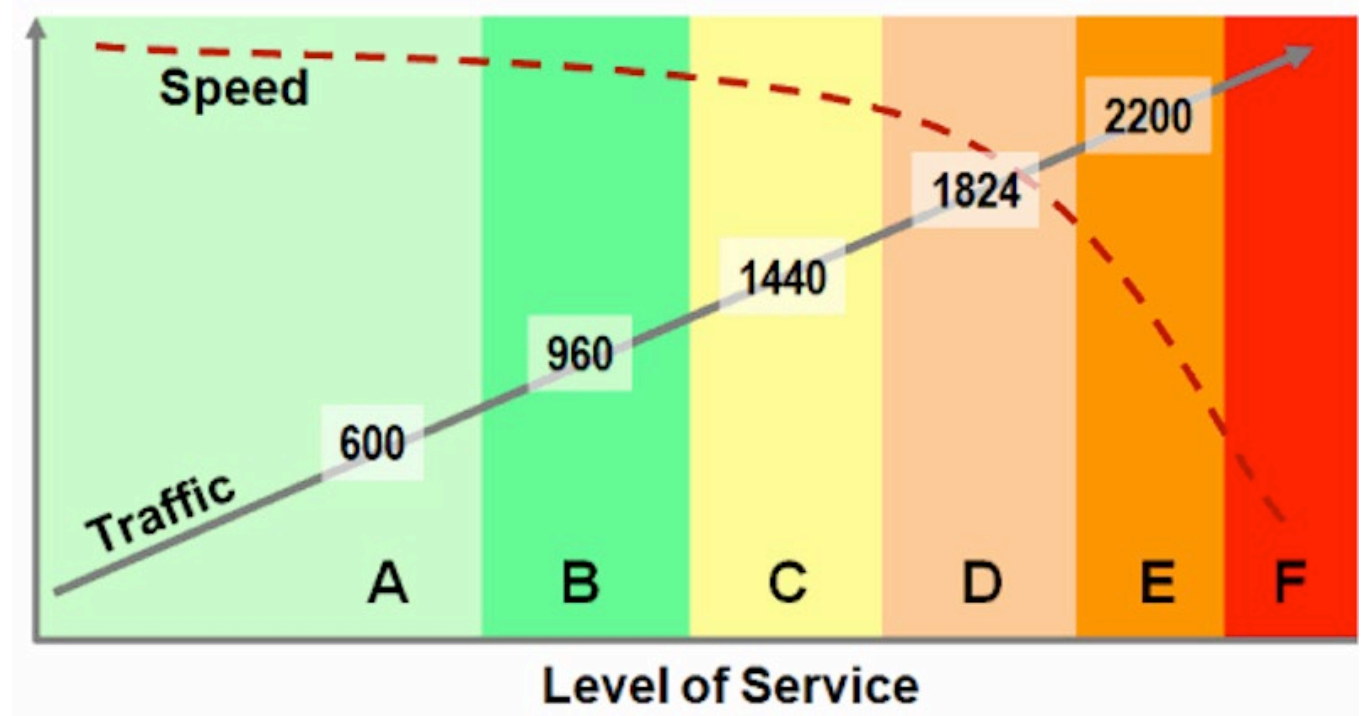
Table of Contents

- PGIS.PGIS.Parcels
- CHHA
  - Cat 1
  - Parcels
- Road Layers
  - Segment\_LOS\_2018
    - A
    - B
    - C
    - D
    - E
    - F
  - Level of Service
    - A
    - B
    - C
    - D
    - E
    - F
- Road Names - Black
- Strategy Map Layers
- Activity\_Centers



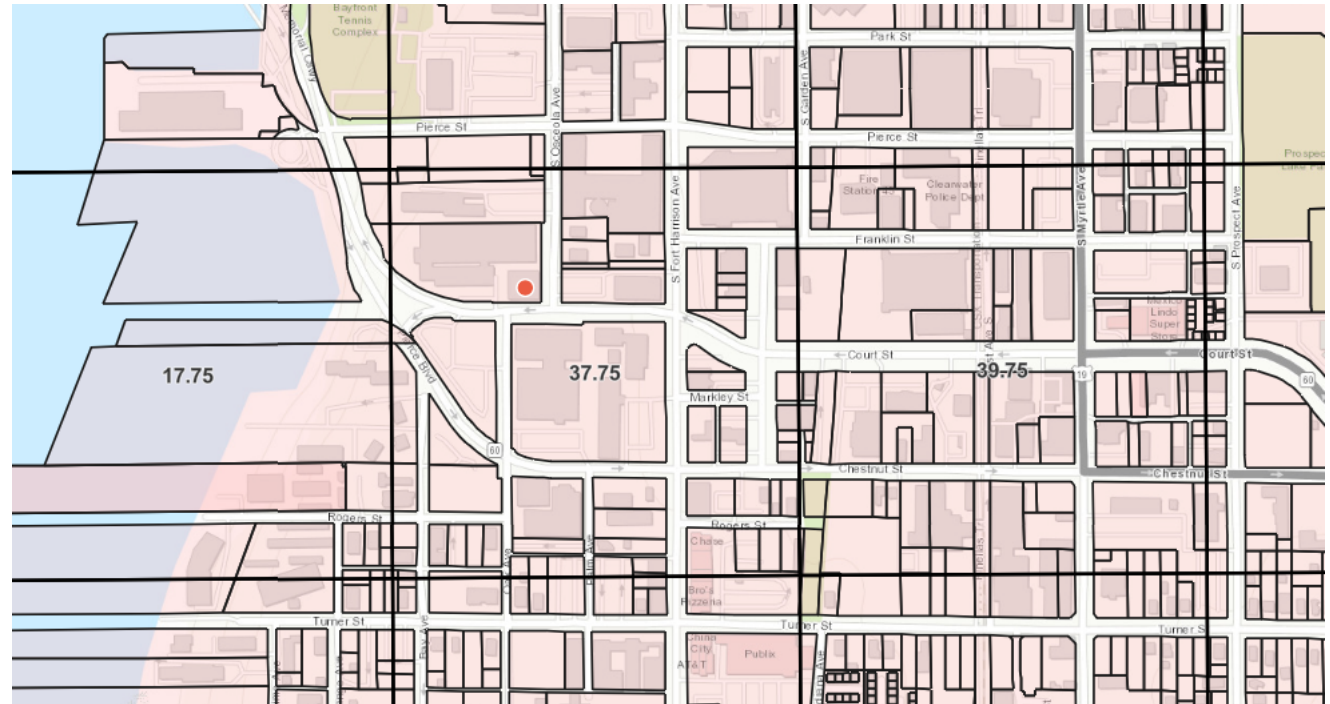
## Problems with Level of Service

- In many areas, Level of Service **cannot be improved** due to the redeveloping nature of Pinellas County
- Only measured on **major** roadways during **peak** times



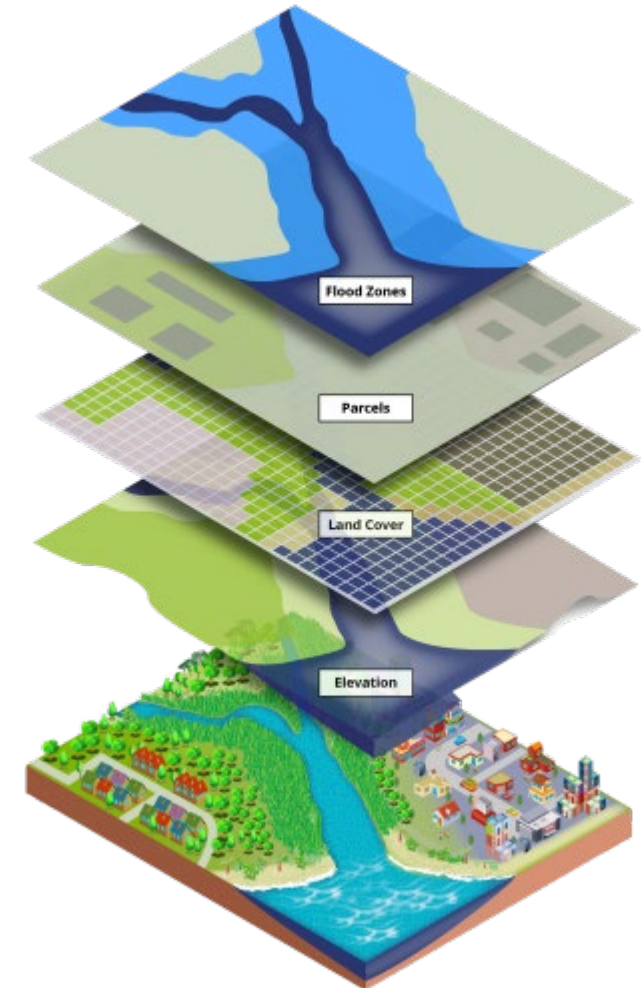
## Solution: MAX Index

Accounts for other modes of transportation, encouraging **multimodal transportation investments** that allow for greater **redevelopment**

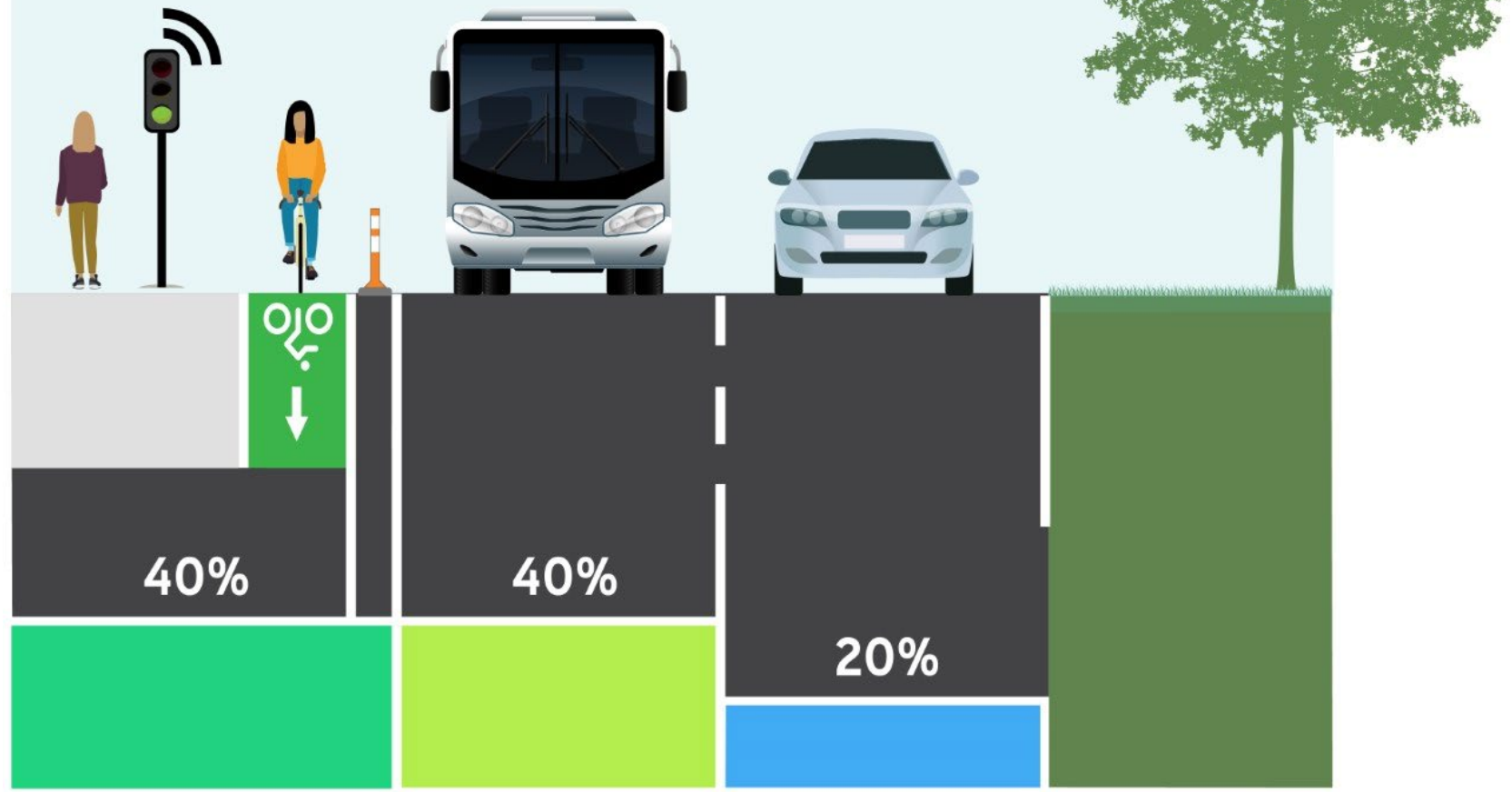


MAX scores are assigned to **quarter-mile** grid cells and calculated as a total of the following features present within that grid cell:

- **3 points** – Separated bike lanes
- **3 points** – Trail access
- **3 points** – Bus Rapid Transit stations
- **3 points** – Bus headways of 30 minutes or less
- **2 points** – Walkability Score at the countywide average or better (based upon the EPA Walkability Index)
- **1.5 points** – Level of Service of D or better
- **1.5 points** – Average volume to capacity ratio of countywide average or better
- **1 point** – Sharrows
- **1 point** – Micro-mobility access (such as scooter/bike-sharing locations)
- **1 point** – Transit access (such as bus stops)
- **1 point** – Transportation Improvement Program projects (including roads, trails, sidewalks, pedestrian overpasses, etc.)

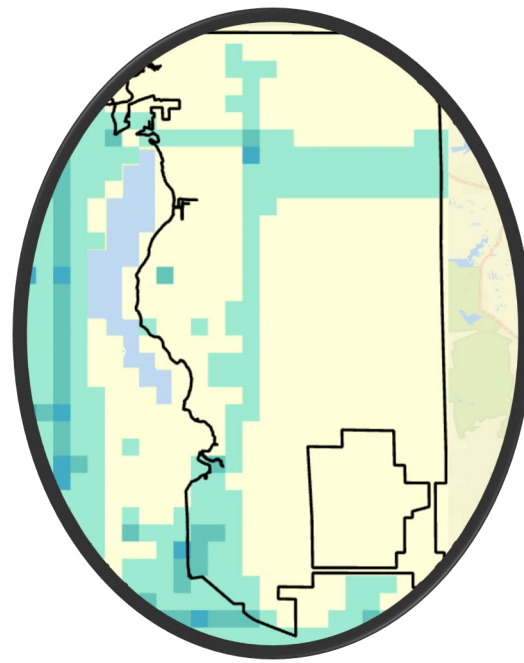


# Desired Spending by Mode

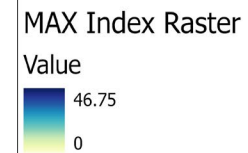
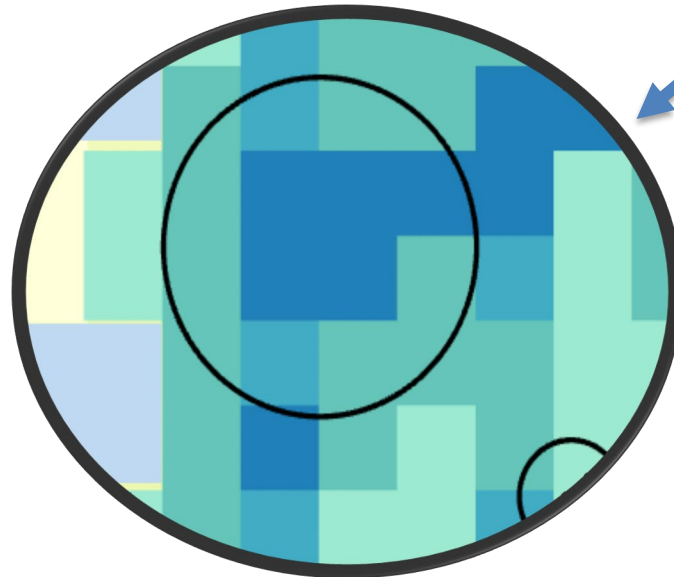




East Lake  
Average MAX score: 2.0



Downtown Dunedin  
Average MAX score: 16.2



## What impacts will implementing the MAX Index have?

- Amendments to the Countywide Plan Map will need to maintain a MAX score **equal to or better** than the **Countywide Average MAX score** at the time
- Current Countywide Average MAX score: 7.5
- If that score is not reached, **balancing criteria** will be required

## MAX Index Balancing Criteria

1. Community Redevelopment Area
2. Planned infrastructure
3. Activity Center, Multimodal Corridor, and/or Planned Redevelopment District
4. Intersects more than one grid cell
5. Consistent with established multimodal plans

Questions?

**Jared Austin, AICP**

*Principal Planner*

jaustin@forwardpinellas.org

727-464-5643