

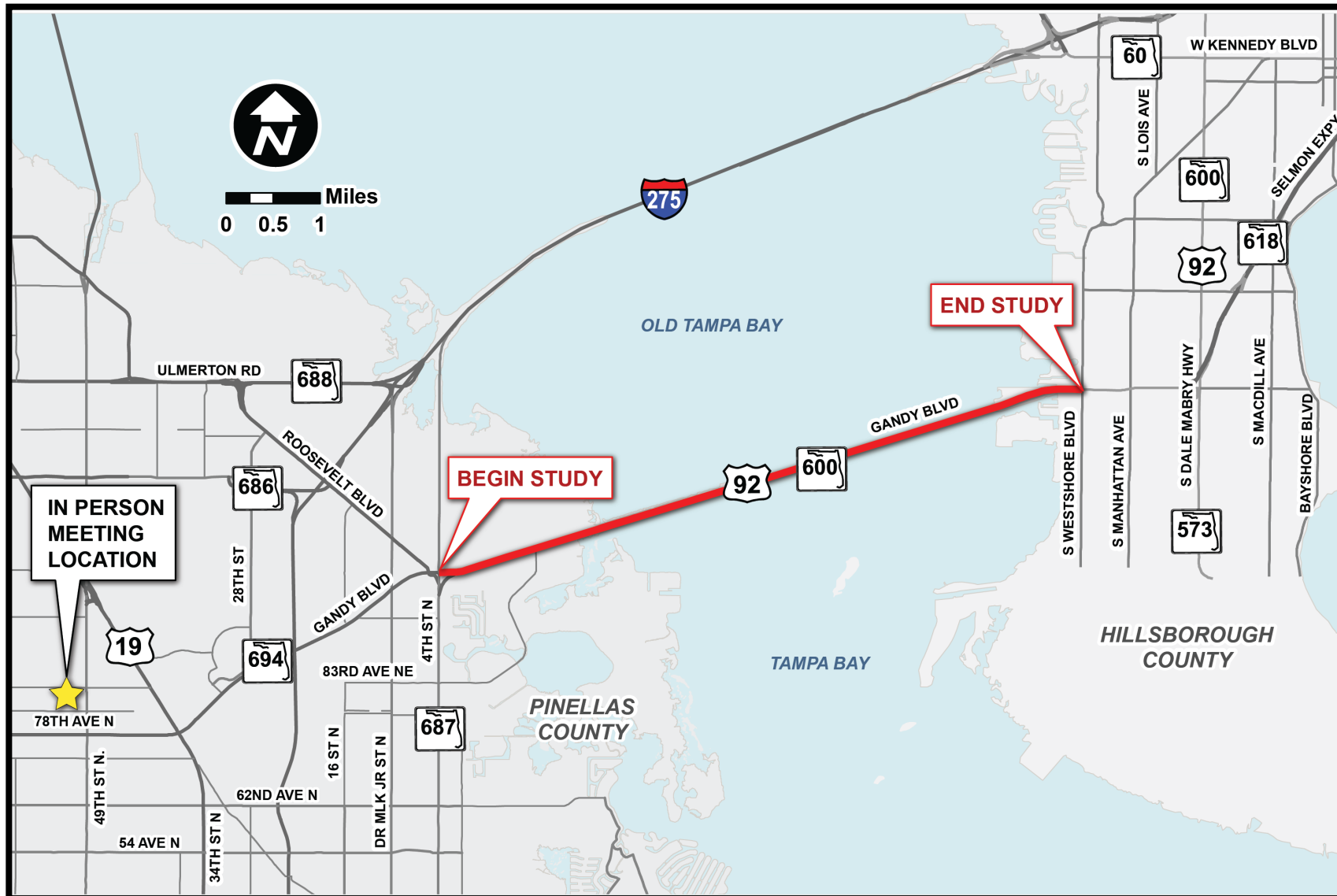


Forward Pinellas

US 92/SR 600/ Gandy Blvd from 4th St to West Shore Blvd
Project Development & Environment (PD&E) Study
WPI Segment No.: 441250-1



FROM 4TH STREET TO WEST SHORE BOULEVARD



Project Purpose and Need

Purpose

- Reduce traffic congestion
- Improve bicycle and pedestrian accommodations

Need

- The segment 4th Street to the west end of the Gandy Bridge has a deficient level of service (LOS) in both 2016 and 2040. The segment of US 92/SR 600/Gandy Boulevard from the east end of the Gandy Bridge to the vicinity of Westshore Boulevard is will have a deficient LOS in 2040.
- Limited on-street bicycle accommodations are present within the study area. According to the Forward Pinellas' (Metropolitan Planning Organization) Active Transportation Plan, construction of bike lanes and a trail from 4th Street to west of San Martin Boulevard is planned. The Duke Energy/Pinellas Loop from 28th Street to San Martin Boulevard is also planned.



Project Location and Study Area

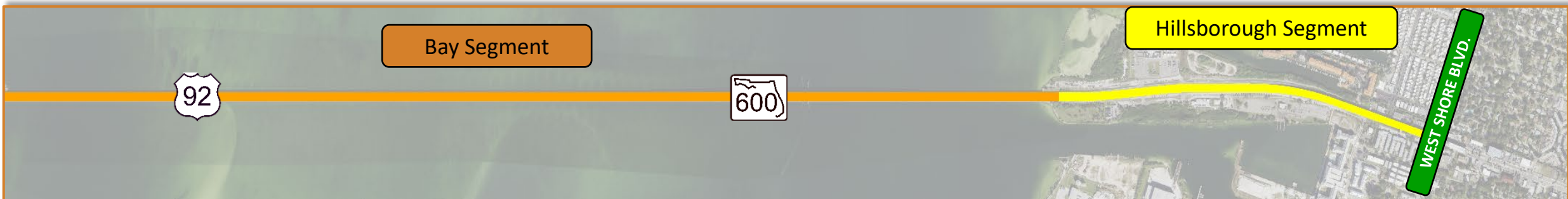
Segment 1 – Pinellas Segment

- Limits: From 4th Street to west end of Gandy bridges
- Length: 3.6 miles



Segment 2 – Bay Segment

- Limits: Gandy Bridges over Old Tampa Bay
- Length: 2.6 miles



Segment 3 – Hillsborough Segment

- Limits: From east of Gandy bridges to West Shore Blvd.
- Length: 1.0 mile

US 92/SR 600/Gandy Boulevard

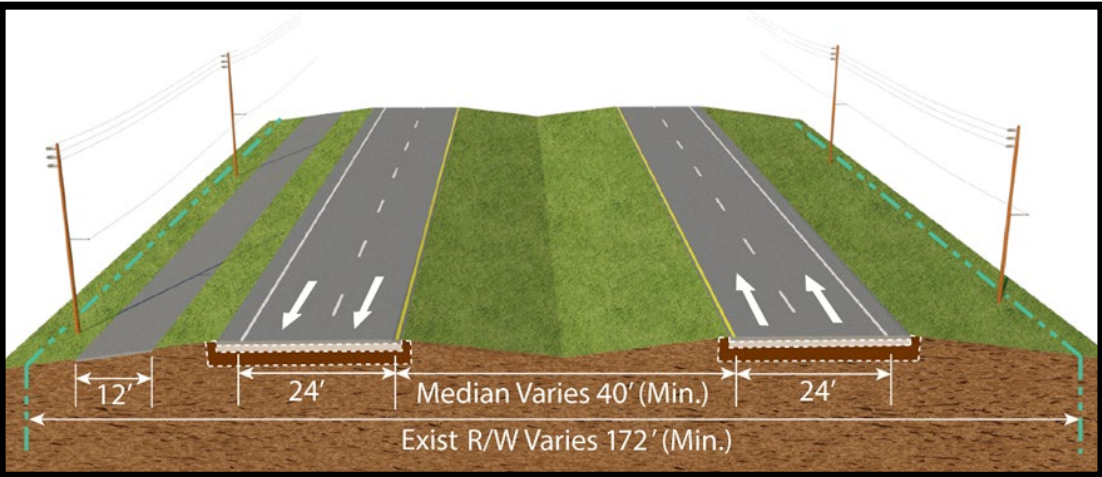
An important east-west corridor in Pinellas and Hillsborough Counties

- Part of Florida's Strategic Intermodal System (SIS)
- Connects to regionally significant corridors:
 - I-275
 - US 19
 - Lee Roy Selmon Expressway (SR 618)
 - Tampa-Hillsborough Expressway Authority (THEA)
- Connects to regional centers in St. Petersburg and Tampa in the Tampa Bay Area
- Hurricane Evacuation Route

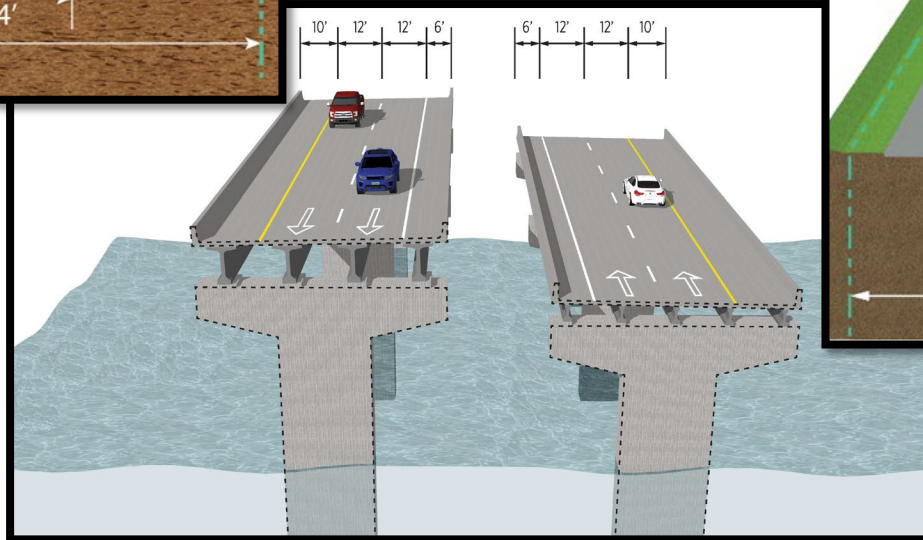


Existing Typical Sections

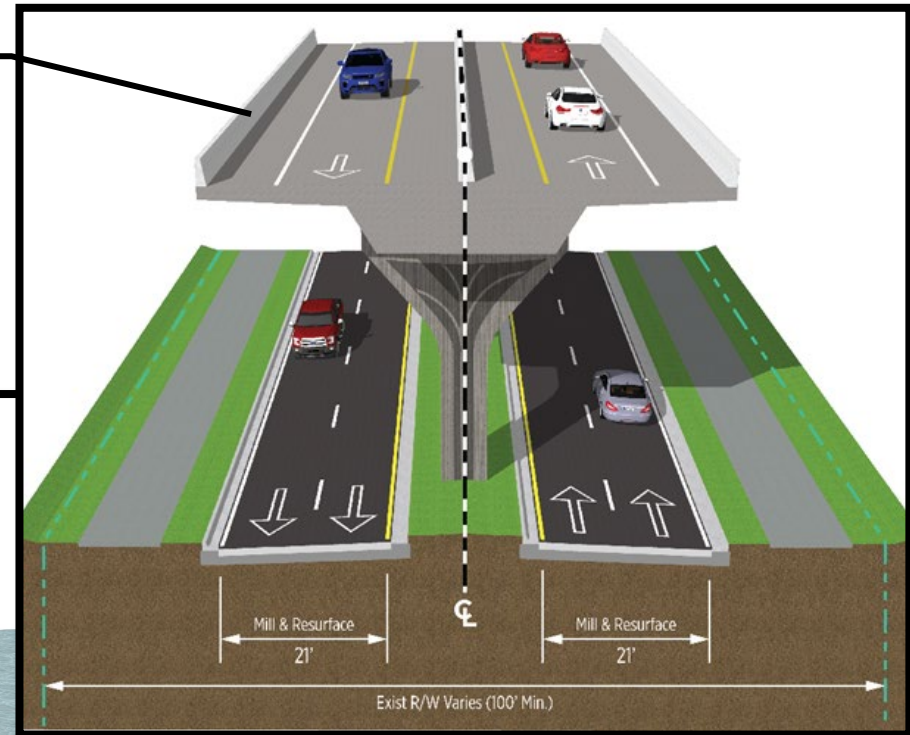
Lee Roy Selmon Expressway (THEA)



Segment 1 - Pinellas Segment



Segment 2 - Bay Segment



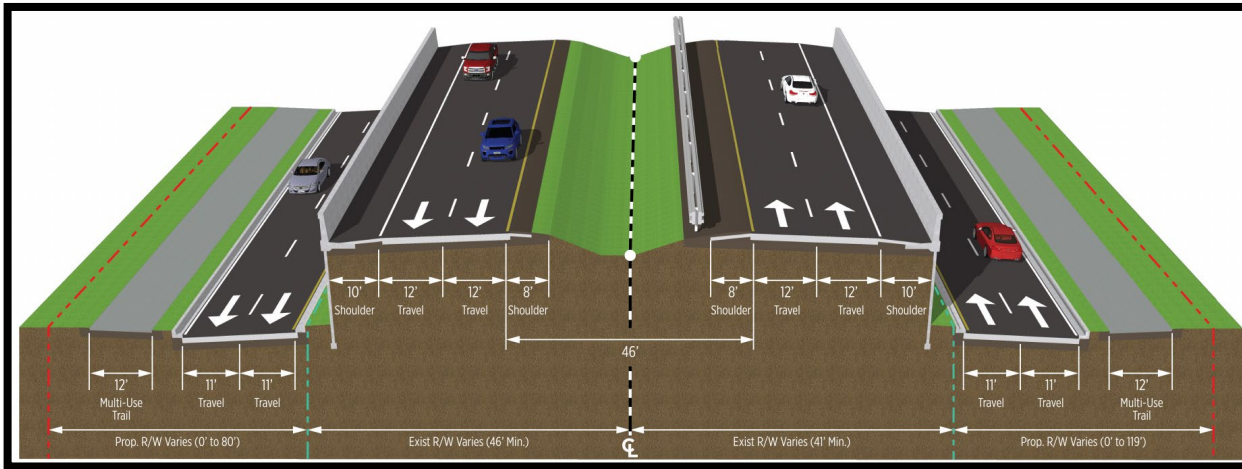
Segment 3 - Hillsborough Segment

Segment 1 - Pinellas Segment

Preferred Typical Section 1:

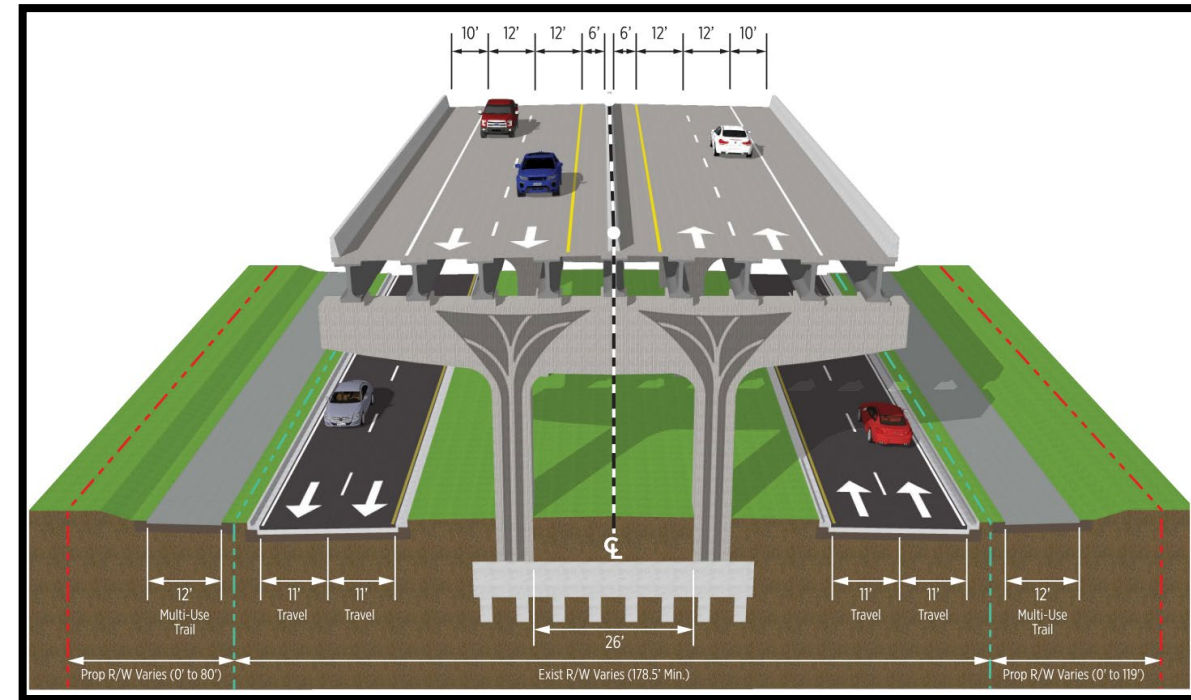
4th St to Brighton Bay Blvd.;

San Martin Blvd to east of San Fernando Dr.



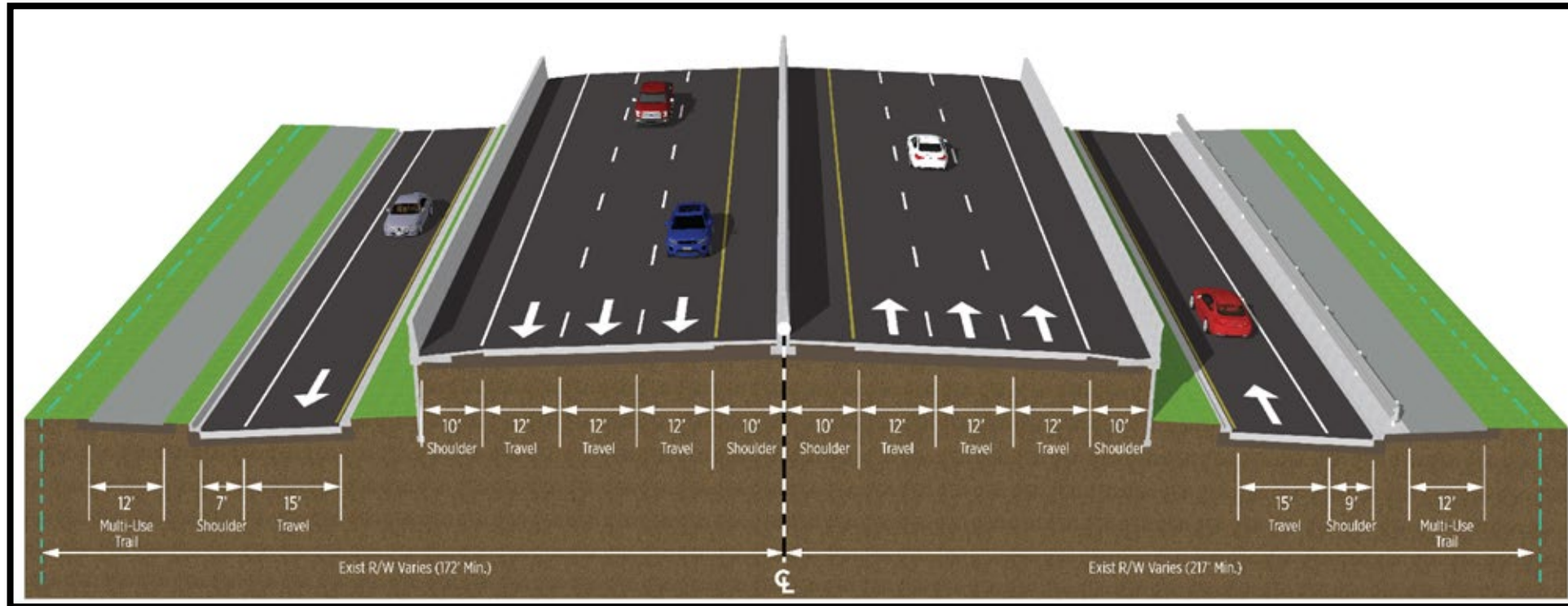
Preferred Typical Section 2:

Brighton Bay Blvd to San Martin Blvd



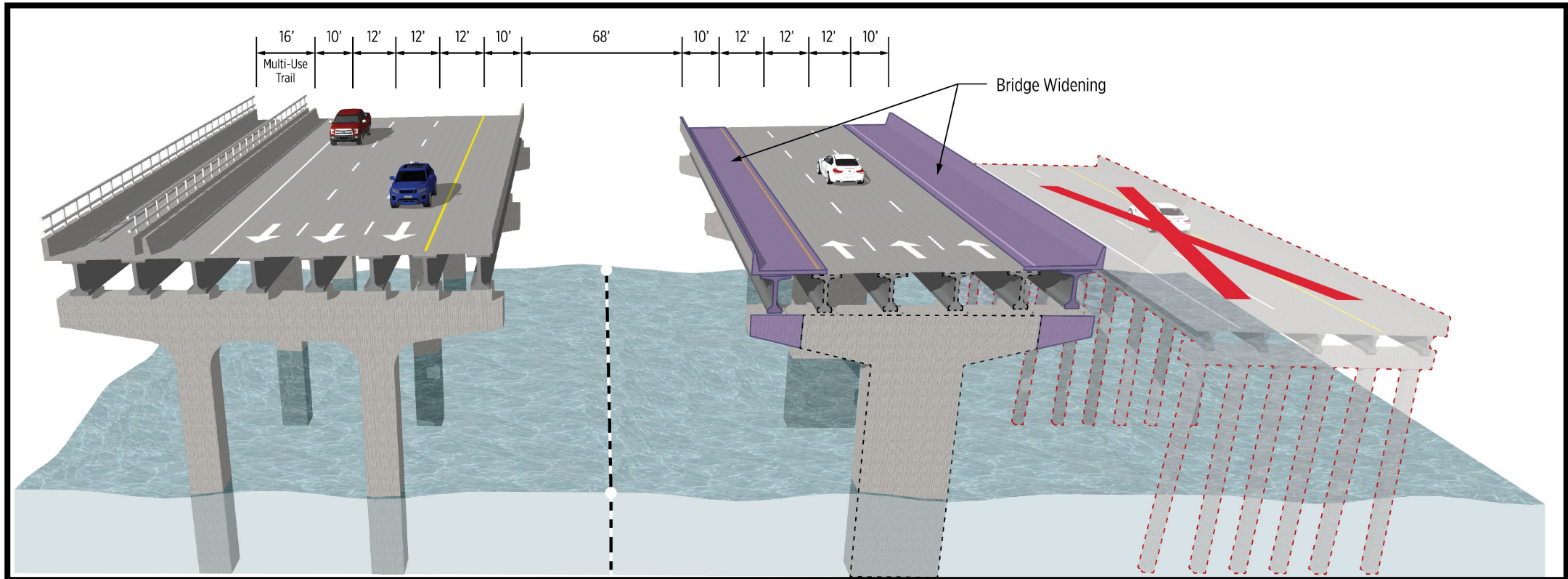
Segment 1 - Pinellas Segment

Preferred Typical Section 3: San Fernando Dr to west of Gandy Bridges



Segment 2 - Bay Segment

Preferred Typical Section 4: Bridges over Old Tampa Bay



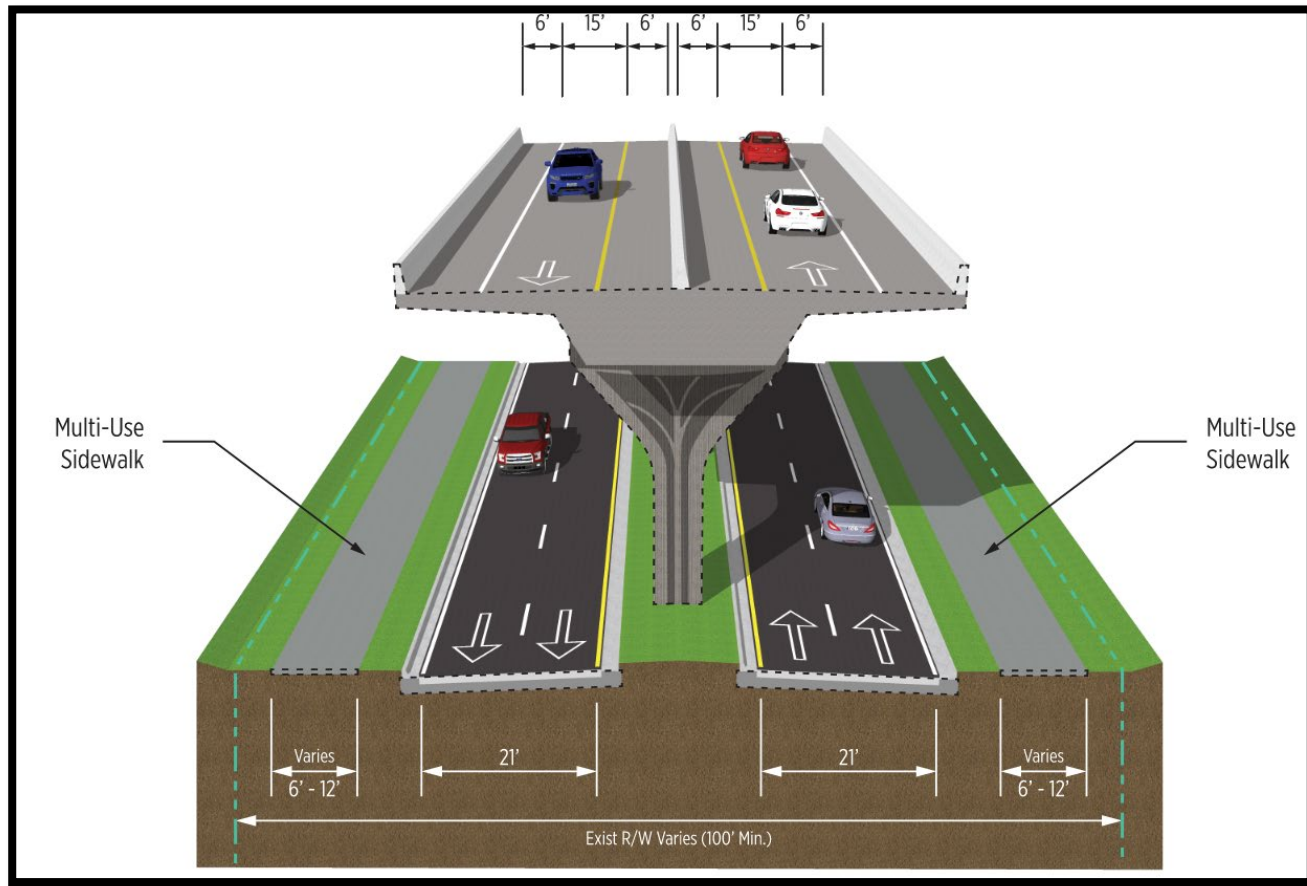
New Westbound Bridge

Existing Westbound Bridge Widened and Converted to Eastbound Traffic

Existing Eastbound Bridge to be Removed

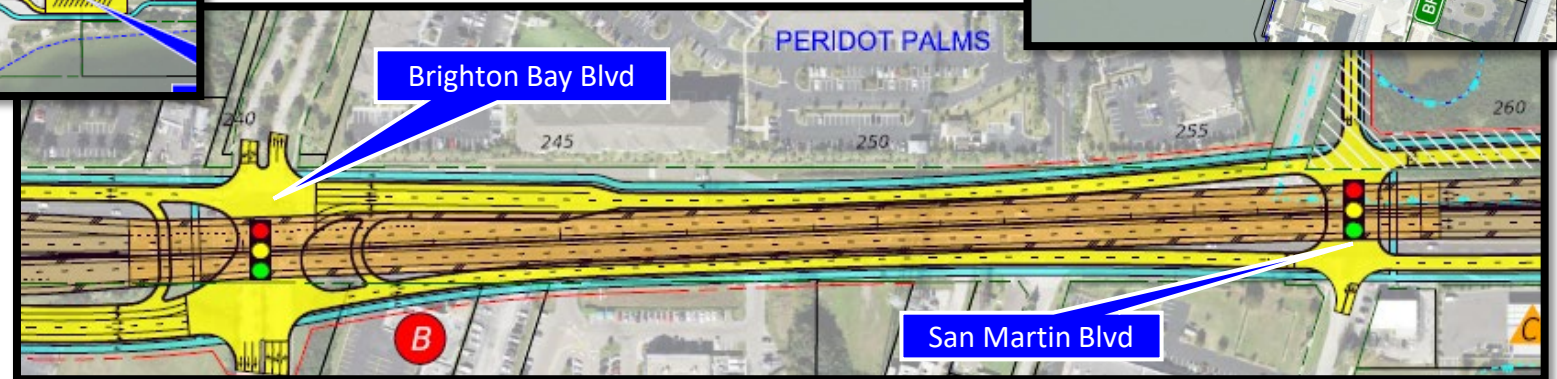
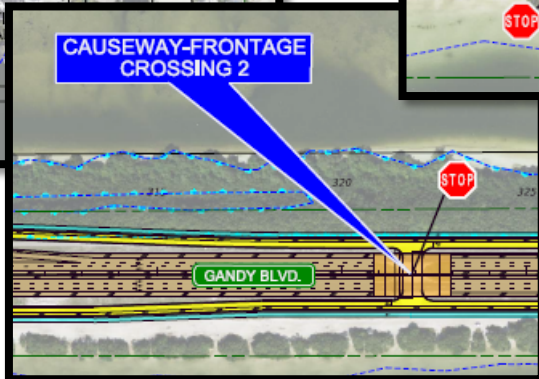
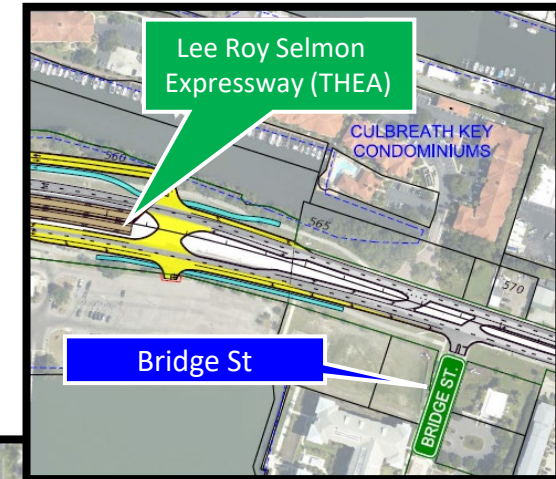
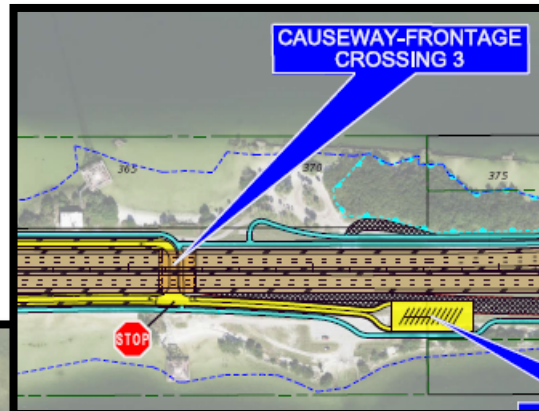
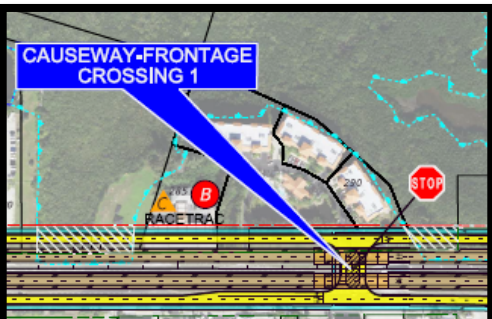
Segment 3 - Hillsborough Segment

Preferred Typical Section 5: East End of Gandy Bridges to West Shore Blvd



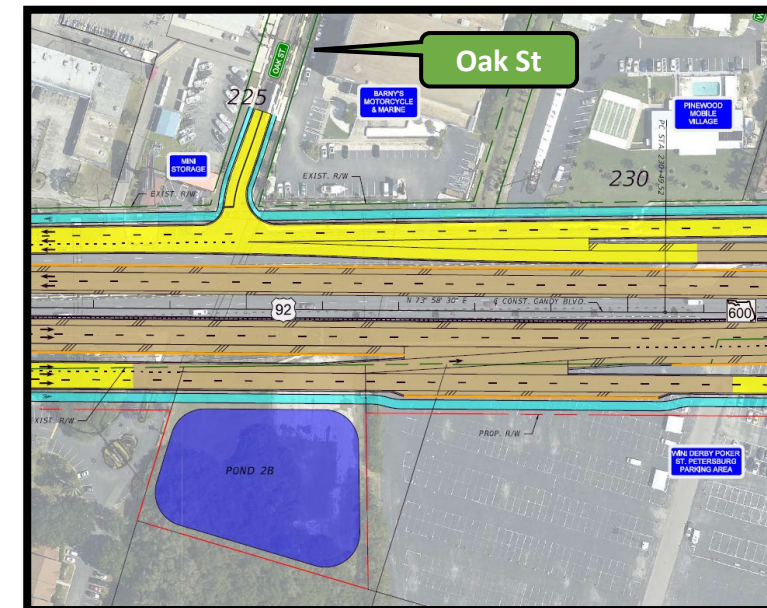
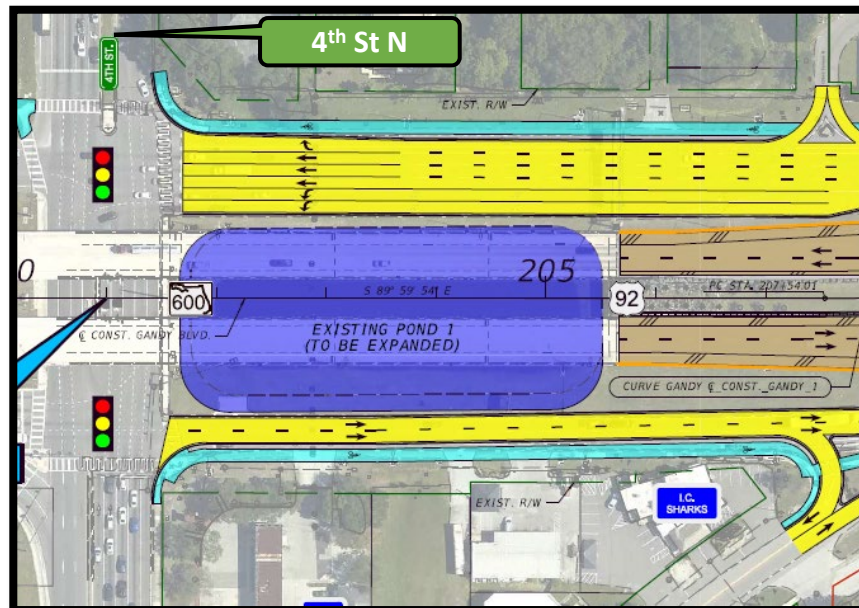
Access Management

- Full openings located at
 - Brighton Bay Blvd and Mangrove Cay Ln/San Martin Blvd
 - 3 located 1,400 ft, 4,600 ft, and 9,000 ft east of Sand Fernando Dr
 - 500 ft west of Bridge St
- Directional median at Bridge St



Stormwater Management and Floodplain Compensation

- 2 proposed stormwater management facilities
 - 1 existing on-site
 - 1 proposed off-site stormwater management facility
- An additional 1.30 acres of right-of-way (R/W) will be required for the proposed off-site stormwater management facility
- No floodplain compensation is required for the project



Environmental Effects

NATURAL RESOURCES

- Wetlands and Surface Waters
- Essential Fish Habitat
- Protected Species and Habitat



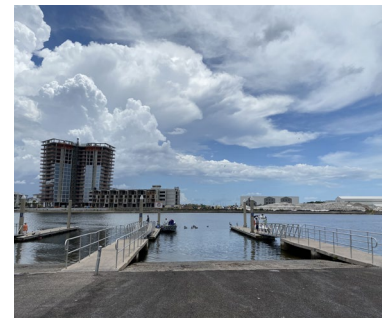
CULTURAL RESOURCES

- Archeological and Historic Resources
- Section 4(f)



SOCIAL ENVIRONMENT

- Land Use
- Community Impact (i.e., Relocations)
- Parks and Rec.



PHYSICAL ENVIRONMENT

- Air Quality
- Noise
- Contamination



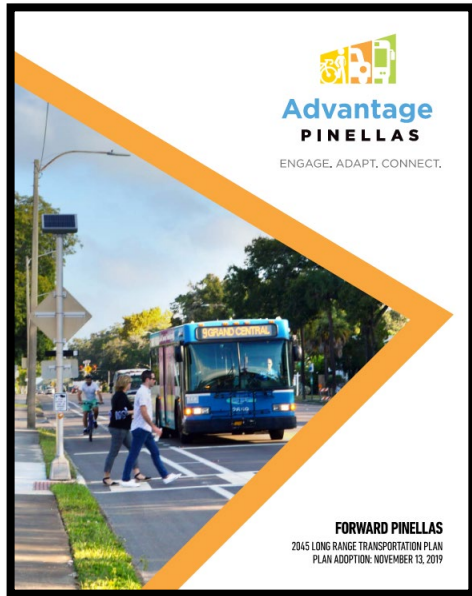


Estimated Project Cost

Design	Right-of-Way	Wetland Mitigation	Construction Engineering & Inspection	Construction	Total
\$59.86 Million	\$41.94 M	\$1.25 M	\$59.86 M	\$598.57 M	\$761.48 M



Consistency with Transportation Plans



2045 LRTP



2045 LRTP



Schedule and Funding

Schedule

Study Began	February 2020
Data Collection	Completed August 2022 (Project Delayed)
Preparation of Documents	Ongoing
Public Hearing	February 28, 2023
PD&E Study Approval	2 nd Quarter of 2023

Five Year Adopted Work Program (2022/23 – 2026/27)

Segment	Design	Right-of-Way	Construction
1. Pinellas Segment (4 th St N to W of Gandy Bridges)	2022/2023	Not Currently Funded	Not Currently Funded
2. Bay Segment (W of Gandy Bridges to E of Gandy Bridges)	Not Currently Funded	No-ROW Required	Not Currently Funded
3. Hillsborough Segment (E of Gandy Bridges to West Shore Blvd)	Not Currently Funded	No-ROW Required	Not Currently Funded

Public Hearing

Tuesday, February 28, 2023
5:30-7:30PM

In Person: Pinellas Park Performing Arts Center
4951 78th Ave N
Pinellas Park, FL 33781

Virtual: GoToWebinar



Attendance	
Method	Count
In-Person	82
Virtual	46
Total Recorded Attendees	128



Comments

Submission Method	Count*
Via Project Website	151
Mailed	2
Formal Public Hearing	10

*Comments as of 3/7/23. Comment Period Closes 3/10/23



Contact Information

Project Website

<https://www.fdotd7studies.com/projects/gandy-4th-to-Westshore/>



Project Manager

Craig Fox, PE
(813)-975-6082
Craig.Fox@dot.state.fl.us



THANK YOU!

Questions/Comments



Remember to be Alert Today, Alive Tomorrow.
Safety doesn't happen by accident.