



FORWARD PINELLAS

Integrating Land Use & Transportation



PINELLAS GATEWAY / MID-COUNTY AREA MASTER PLAN

FORWARD PINELLAS BOARD PRESENTATION— November 10, 2020

Municipalities in the Gateway Area

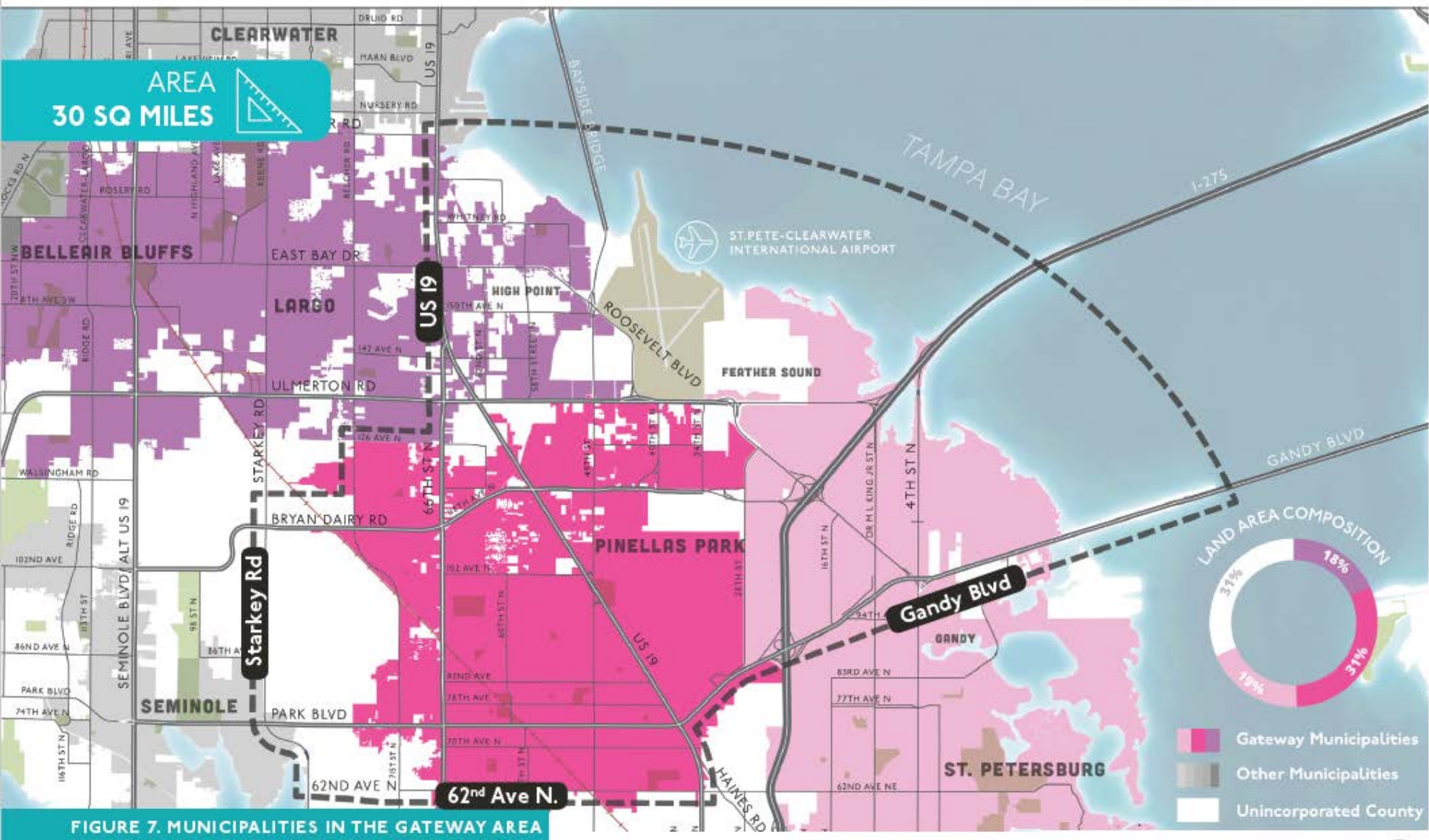


FIGURE 7. MUNICIPALITIES IN THE GATEWAY AREA

SOURCE: GOOGLE

0 1/4 1/2 1 1.5 2 MILES



Guiding Principles of the Plan

PLANNING & DESIGN PRINCIPLES



General Plan Recommendations

- Improved Access and Mobility
 - Connected transportation networks for all modes recognizing adjacent land uses
 - Incorporation of mixed-use districts
 - Balance of multimodal safety and access
- Address Vulnerabilities
 - Heightened emphasis on sustainability and resiliency
- Job Retention and Job Growth
- Public Realm Improvements



PINELLAS GATEWAY / MID-COUNTY AREA
MASTER PLAN

SEPTEMBER 18, 2020

Project Status

- Final Gateway Master Plan complete
- Final Memorandum of Understanding (MOU) complete and adopted
- Moving toward implementation phase
 - Update of website
 - Development of performance indicators
 - Determine responsible parties for data gathering
 - Development of reporting structure



Implementation Management Structure

- Final MOU documents commitment between the Parties to implement the Gateway Master Plan
- Local governments are agreeing to support the Planning and Design Guiding Principles through implementation actions

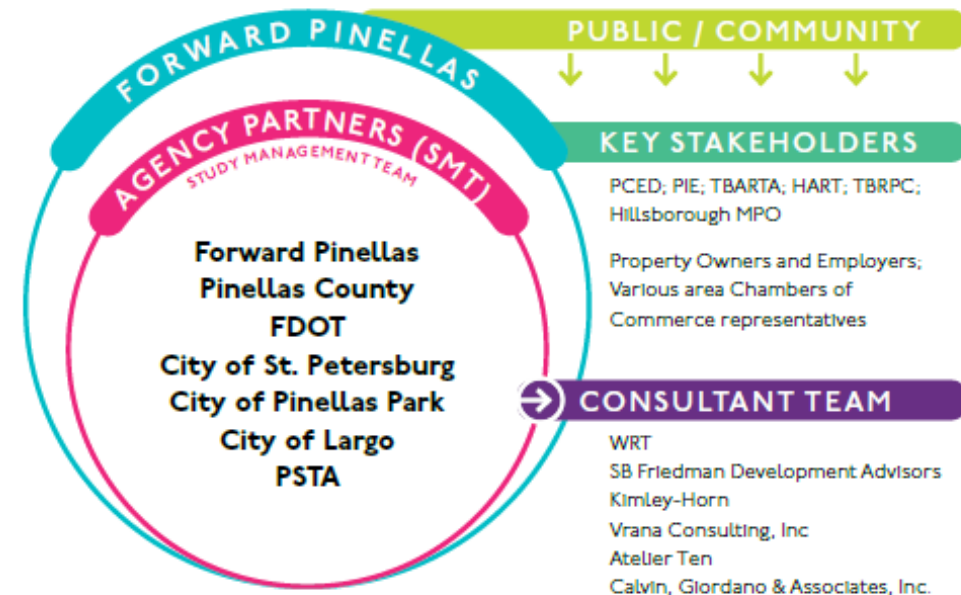


FIGURE 2. PARTNERS AND STAKEHOLDERS

The process was informed by Agency Partners, the public / community, and key stakeholders from within the Gateway.

MOU Key Recommendations

Recommendation

Establish the Gateway Partnership responsibilities and membership

Establish Forward Pinellas as the conduit to engage partners and coordinate meetings

Commit Parties to ensuring that the Gateway Master Plan is considered at all levels of local government structure, during amendment of relevant plans, prioritization of projects, and development of affordable housing strategies

MOU Key Recommendations

Recommendation

Commit Parties to working together to ensure no net loss of employment potential and using land more efficiently

Commit Parties to practicing inclusive planning, to working with private sector to develop subareas, and to engaging the landowners of catalyst sites

Commit Forward Pinellas to developing a monitoring system for progress, convening meetings and maintaining the website; and the Gateway Partnership to establishing a reporting and collaboration structure

Next Steps



ADOPTION OF MOU BY FORWARD
PINELLAS BOARD



DEVELOP PERFORMANCE INDICATORS
AND REPORTING STRUCTURE



IMPLEMENT PERFORMANCE INDICATORS
AND REPORTING STRUCTURE



FORWARD PINELLAS

Integrating Land Use & Transportation

THANK YOU!

For more information, visit:
gatewaymasterplan.org

Christina Mendoza, AICP
cmendoza@forwardpinellas.org
Direct: 727-464-5693
Cell: 941-524-8373

